

Sustainable Development Select Committee		
Title	Select Committee work programme	
Contributor	Scrutiny Manager	Item 7
Class	Part 1 (open)	11 September 2019

1. Purpose

- 1.1 To advise members of the Committee's work programme for the 2019/20 municipal year and to agree the agenda items for the next meeting.

2. Summary

- 2.1 The Committee drew up a draft work programme at the beginning of the municipal year for submission to the Business Panel for consideration.
- 2.2 The Business Panel considered the proposed work programmes of each committee on 7 May 2019 and agreed a co-ordinated overview and scrutiny work programme.
- 2.3 The work programme can, however, be reviewed at each select committee meeting to take account of changing priorities.

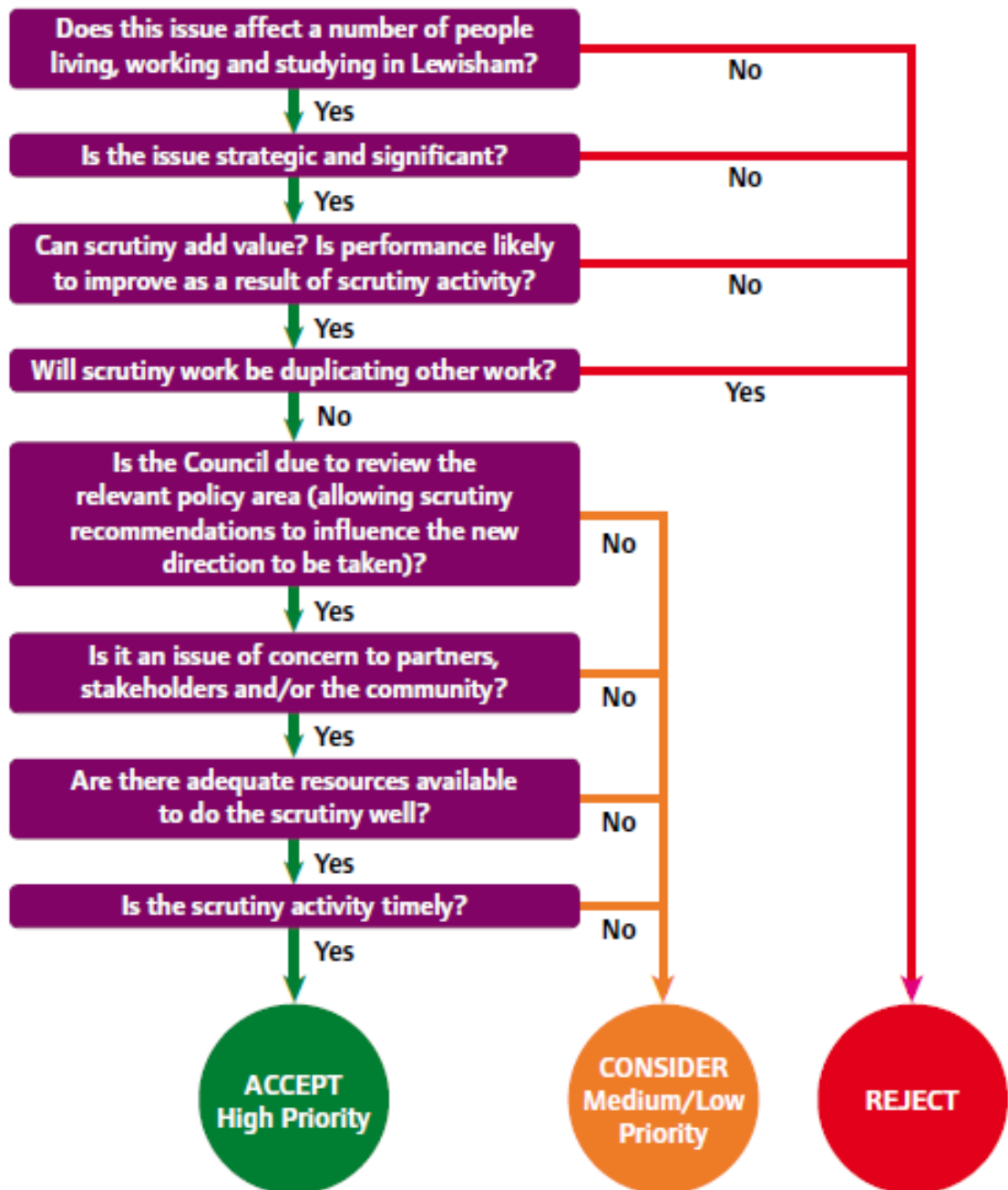
3. Recommendations

- 3.1 The Committee is asked to:
- consider the work programme attached at **Appendix B** – and discuss any issues arising from the programme
 - consider the items scheduled for the next meeting – and specify the information the committee requires to achieve its desired outcomes
 - review the forthcoming key decisions set out in **Appendix C** – and consider any items for further scrutiny

4. The work programme

- 4.1 The work programme for 2019/20 was agreed at the meeting on 30 April 2019.
- 4.2 Members are asked to consider if any urgent issues have arisen that require scrutiny and if any items should be removed from the work programme.
- 4.3 Any additional items should be considered against the prioritisation process before being added to the work programme (see flow chart below).
- 4.4 The Committee's work programme needs to be achievable in terms of the meeting time available. If the Committee agrees to add additional items, members will also need to consider which lower-priority items should be removed to create sufficient capacity.

Scrutiny work programme – prioritisation process



- 4.5 Items within the Committee's work programme should be linked to the priorities of the Council's Corporate Strategy.
- 4.6 The Council's Corporate Strategy for 2018-2022 was approved at full council in February 2019.
- 4.7 The strategic priorities of the [Corporate Strategy for 2018-2022](#) are:
1. ***Open Lewisham*** - Lewisham is a welcoming place of safety for all, where we celebrate the diversity that strengthens us.
 2. ***Tackling the housing crisis*** - Everyone has a decent home that is secure and affordable.
 3. ***Giving children and young people the best start in life*** - Every child has access to an outstanding and inspiring education, and is given the support they need to keep them safe, well and able to achieve their full potential.
 4. ***Building an inclusive local economy*** - Everyone can access high-quality job opportunities, with decent pay and security in our thriving and inclusive local economy.
 5. ***Delivering and defending: health, social care and support*** - Ensuring everyone receives the health, mental health, social care and support services they need.
 6. ***Making Lewisham greener*** - Everyone enjoys our green spaces, and benefits from a healthy environment as we work to protect and improve our local environment.
 7. ***Building safer communities*** - Every resident feels safe and secure living here as we work together towards a borough free from the fear of crime.

5. The next meeting

5.1 The following items are scheduled for the next meeting on 28 October 2019.

5.2 The Committee is asked to specify the information and analysis it requires for each item, based on the outcomes it would like to achieve, so that officers are clear about what information they need to provide. The Committee is also asked to decide the priority rating for each item.

Agenda item	Review type	Relevant Corporate Priority	Priority
Implementation of the air quality action plan	Performance monitoring	CP6	Medium
Parking policy update	Performance monitoring	CP6	Medium
Cycling	Pre-decision	CP6	Medium
Catford Town Centre regeneration update	Performance monitoring	CP2, CP4, CP6	High
Parks management in-depth review evidence session	In-depth review	CP6	High

6. Referrals

6.1 Below is a list of the referrals the committee has made in this municipal year:

Referral title	Date of referral	Date considered by Mayor & Cabinet	Response due at Mayor & Cabinet	Response due at committee
Home energy conservation	4 June 2019	26 June	10 October	28 October
Mayor and Cabinet responses on pubs and fire safety	4 July 2019	10 July	To be decided.	To be decided.
Catford regeneration (8)	4 July 2019	10 July	To be decided.	To be decided.

7. Financial implications

- 7.1 There are no financial implications arising from the implementation of the recommendations in this report.

8. Legal implications

- 8.1 In accordance with the Council's Constitution, all scrutiny select committees must devise and submit a work programme to the Business Panel at the start of each municipal year.

9. Equalities implications

- 9.1 The Equality Act 2010 brought together all previous equality legislation in England, Scotland and Wales. The Act included a new public sector equality duty, replacing the separate duties relating to race, disability and gender equality. The duty came into force on 6 April 2011. It covers the following nine protected characteristics: age, disability, gender reassignment, marriage and civil partnership, pregnancy and maternity, race, religion or belief, sex and sexual orientation.
- 9.2 The Council must, in the exercise of its functions, have due regard to the need to:
- eliminate unlawful discrimination, harassment and victimisation and other conduct prohibited by the Act
 - advance equality of opportunity between people who share a protected characteristic and those who do not.
 - foster good relations between people who share a protected characteristic and those who do not.
- 9.3 There may be equalities implications arising from items on the work programme and all activities undertaken by the select committee will need to give due consideration to this.

Background documents

Lewisham Council's Constitution

Centre for Public Scrutiny: the Good Scrutiny Guide