



**NHS**

*working together*

**NHS**

Lewisham

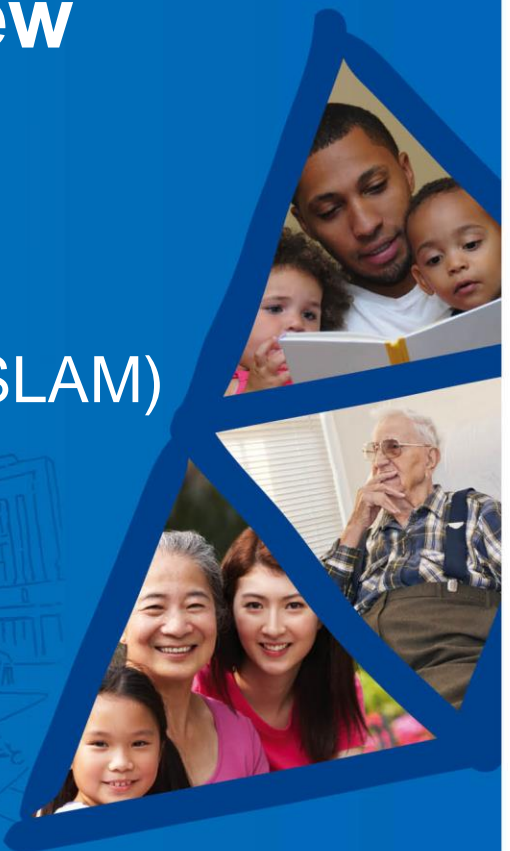
Clinical Commissioning Group

# Mental Health Alliance Overview

Kenneth Gregory ( Joint Commissioning  
Lead – AMH. Lewisham CCG & Council)

Donna Hayward Sussex (Service Director SLAM)

 **Better health, best care**  
for Lewisham people

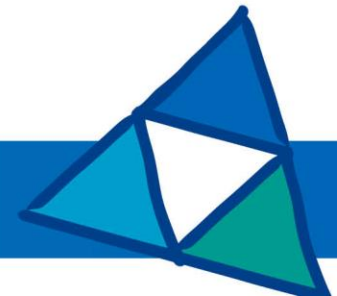
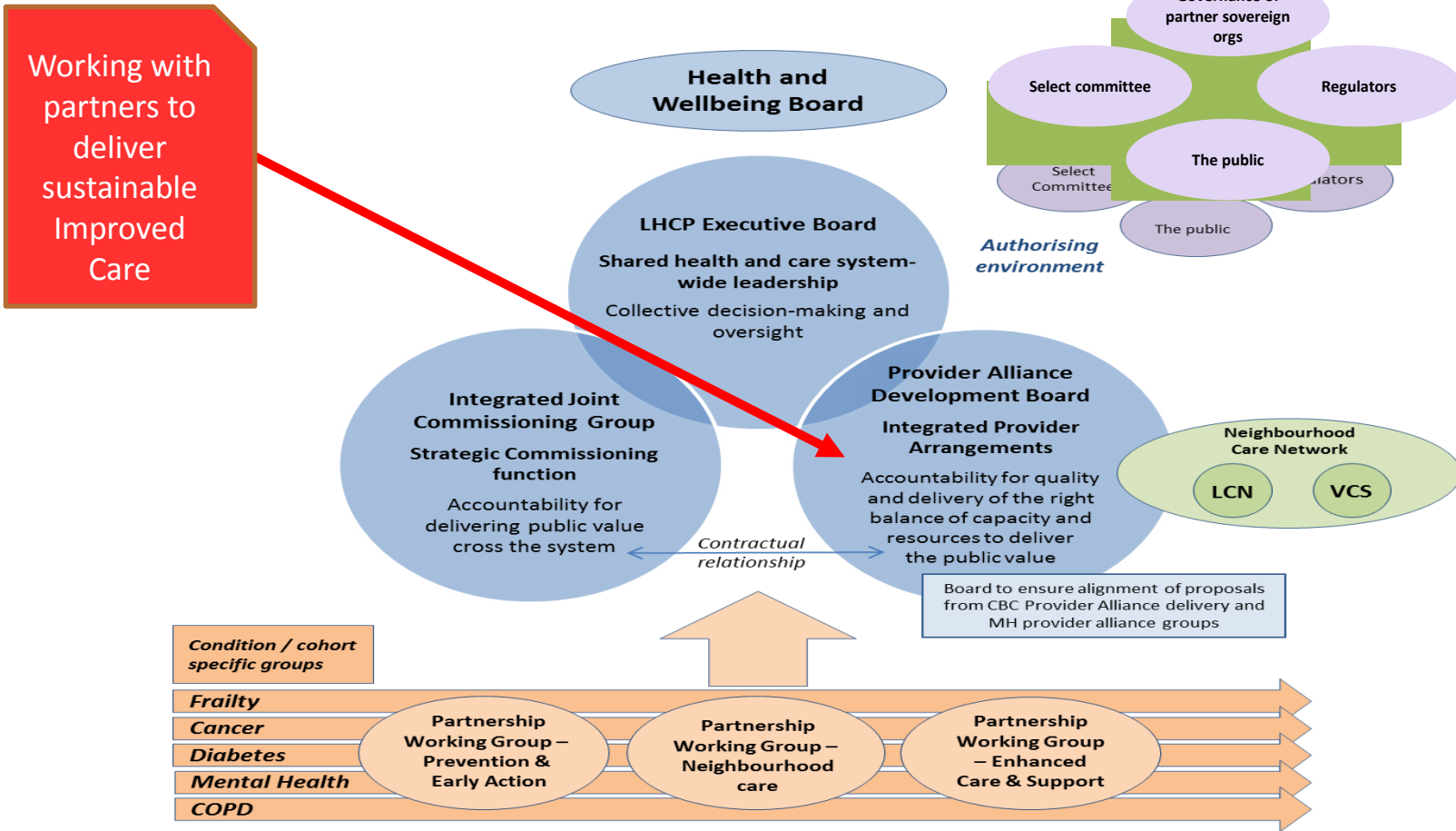


# Mental Health Alliance Partners...

- South London and the Maudsley NHS Foundation Trust
- One Health Lewisham
- London Borough of Lewisham
- Bromley Lewisham & Greenwich Mind
- Lewisham Clinical Commissioning Group



# Together...



# Key Objectives...

- Improve the interface and patient experience between primary care and secondary care.
- Improving physical health for Mental Health patients.
- To reduce health inequalities with a specific focus on individuals and communities with 'Protected Characteristics'
- Improved interface between acute, mental health, community and social care to reduce pressure on urgent care pathways generated by Mental Health referrals.
- Improve access to local health and care services & early intervention.
- Provide Co-ordinated care ensuring that provision is personalised, co-ordinated around individuals and delivered closer to home.



# Our Journey ...

- Partnership formed and objectives identified in 2018.
- Shadow Alliance established in April 2019.

## Next Steps June 2019.

- Community redesign in partnership with service users and carers.
  - Emphasis on Improving Access to Psychology therapy for BAME patients.
  - Developing an integrated approach in primary care.

