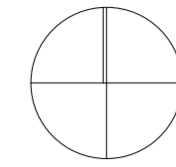


N

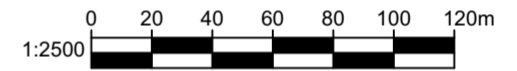


**KEY**

- Other land owned by applicant
- Site boundary for Planning Application

| rev | description  | drawn | checked | date     |
|-----|--|-------|---------|----------|
| P05 | Planning Issue.  | RB    | JH      | 16.11.18 |
| P04 | Planning Pre-Application Issue.<br>Red line boundary extended to include playing fields & Blue line amended to suit. | RB    | JH      | 08.06.18 |
| P03 | RIBA Stage 2 Issue.  | RB    | JH      | 25.05.18 |
| P02 | Preliminary Issue  | RB    | JH      | 17.05.18 |
| P01 | DRAFT issue  | RB    | JH      | 27.04.18 |

| rev | description | drawn | checked | date |
|-----|-------------|-------|---------|------|
| 0   |             |       |         |      |



**Bond Bryan Architects**



The Church Studio Springvale Road Sheffield S10 1LP

t +44(0)1142662040 w www.bondbryan.com  
e StDunstans@bondbryan.co.uk

**St Dunstan's  
New Junior School & STEM Building**

**St Dunstan's College**



**SITE LOCATION PLAN**

| bba project reference | scale(s) | original paper size |
|-----------------------|----------|---------------------|
| 17-171                | 1:2500   | A2                  |

| project                                      | originator | volume | level | type | role | number |
|--|------------|--------|-------|------|------|--------|
| <b>DUNSC - BBA - 00 - ZZ - DR - A - 1001</b> |            |        |       |      |      |        |

status : suitability description :

**D5 ISSUED FOR PLANNING**

revision : revision description :

**P05 PRELIMINARY**

This document is © Bond Bryan Architects Ltd. If in doubt ASK. Drawing measurements shall not be obtained by scaling. Verify all dimensions prior to construction. Immediately report any discrepancies on this document to the Architect. This document shall be read in conjunction with associated models, specifications and related consultant's documents.