



Lewisham Local Plan

Lewisham Council



1: Introduction

Agenda

1. Introduction to the Local Plan process
2. Existing Local Plan
3. Why is the council preparing a new Local Plan
4. Programme
5. Key challenges

A more place based approach



2.

1.

Local Plan

Existing

Its Purpose

Sets a strategy for how the borough will develop over the next 15 years

A strategic plan for the entire borough with a set of design codes and policies that cover:

- Regeneration and growth areas
- Site allocations and briefs
- Design and conservation guidance
- Housing
- Transport and infrastructure
- Employment, town centres and retail
- Environment

Effectively guide decision making and/or set priorities for regeneration and investment

Existing Local Plan



Planning Policy Framework

NPPF and Guidance

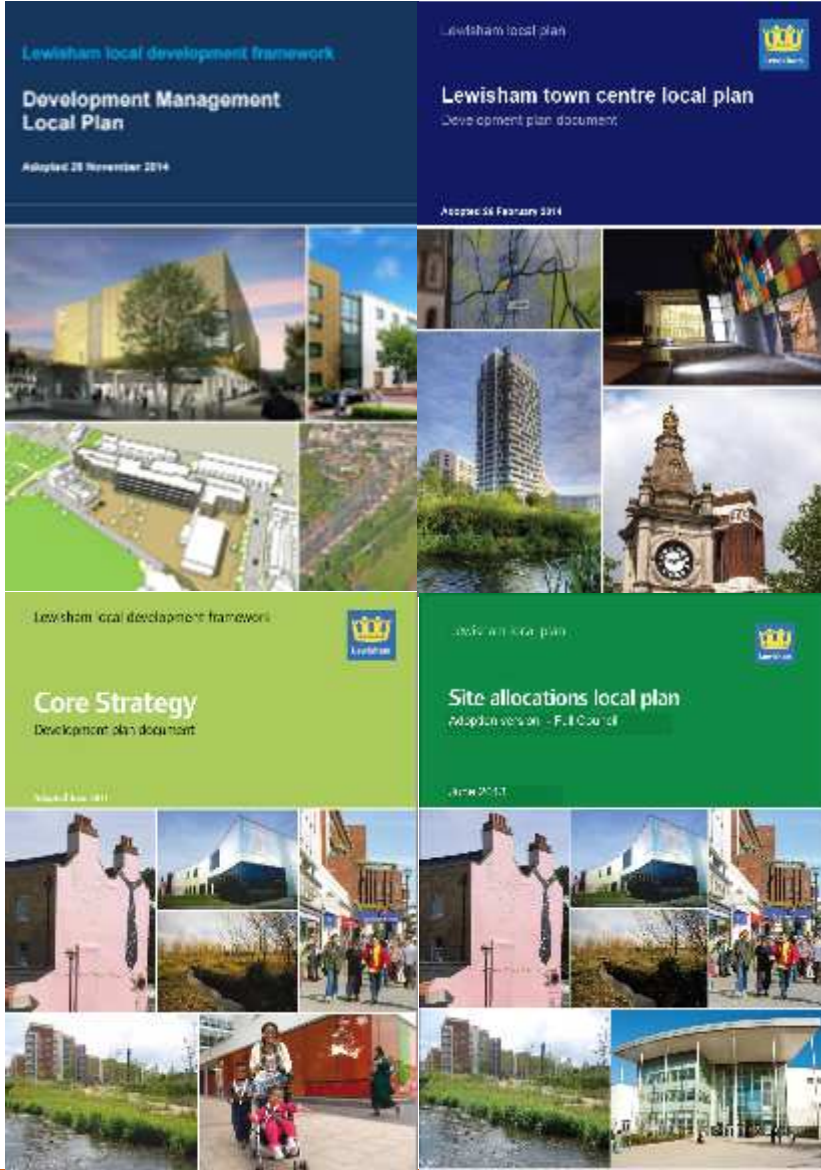
London Plan

Lewisham Local Plan
Core Strategy (2011)
Site Allocations (2013)
Development Mgmt (2014)
Lewisham Town Centre (2014)

Neighbourhood Plans

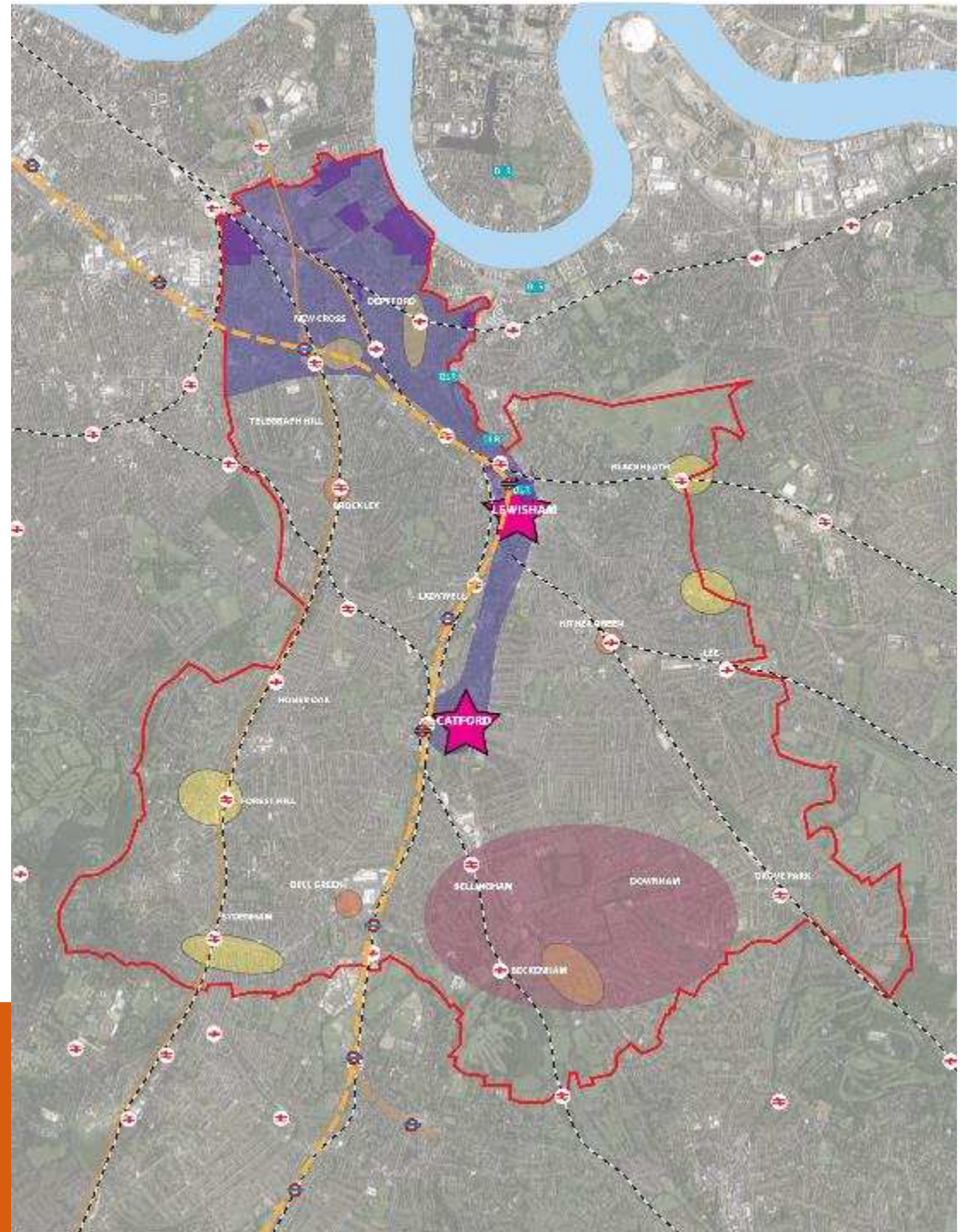
Local Planning Guidance

**Statutory
Development
Plan**



Spatial Plan

- Regeneration & Growth Area
- Release of SIL to MEL to facilitate growth
- Key Centres
 - Catford
 - Lewisham
- Area of local regeneration to the south



Existing Core Strategy



New neighbourhoods





New affordable and specialist housing





New and improved parks and public spaces





New community, education, leisure and employment uses



Delivery

	2014 / 2015	2015 / 2016	2016 / 2017
No. of homes completed	1,468	1,533	1,604
% of affordable	450 – 29%	211 – 14%	327 – 20%
No. homes approved	5,400*	2,371	1,202
S106 received	£7.6m	£5.2m	£7.8m
CIL received	N/A	£1.4m**	£4.4m
New Homes Bonus	£7.8m	£9.7m	£10.1m

* Includes 3,500 outline permission for Convoys

** CIL Introduced this year

Existing Local Plan



3

3

A New Local Plan

Why now?

Its Purpose

Why we need a new Local Plan?

- New requirement to review plans every 5 years
- To remain consistent with emerging NPPF and London Plan
- Most of Local Plan sites now committed (with permission or building started/complete)
- Ensure plan aligns with new Corporate priorities



Why now





4

:/

Local Plan

Programme

Programming

	NPPF	London Plan	Local Plan
Public Consultation	Winter 2015/16	Winter 2017/18	Jan/Feb 2019 (Preferred Approach)
			Spring/Summer 2019 (Publication)
Examination	N/A	Starts Spring 2019	Starts Early 2020
Adoption	Summer 2018	Autumn/Winter 2020	Winter 2020

4. Programme





5

:/

Local Plan

Key challenges

What the new Local Plan needs to deliver

39,000 - 48,000 sqm
retail floorspace



20,438 homes
(new London Plan target)



Along with infrastructure

14,000 -19,000 sqm
employment floorspace



Where can this growth be accommodated...and how?

The numbers



Spatial Plan Scenarios

1. Focus on and intensify growth / opportunity areas
2. Distribute growth across the borough
3. Hybrid approach (focus on accessible locations and corridors)

Housing target

Info	London Plan (Current)	London Plan (Draft)	Government target
Methodology	Bespoke		Standardised
Annual	1,385 units	2,117 units	3,181 units
10 Year	13,850	21,170	31,810
% increase on current	-	53%	130%

2. Housing numbers

