

Healthier Communities Select Committee			
Title	Select Committee work programme		
Contributor	Scrutiny Manager	Item	9
Class	Part 1 (Open)	Date	1 March 2017

## 1. Purpose

- 1.1 To provide Members of the Select Committee with an overview of the work programme for 2016-17 and to propose a draft work programme for 2017-18.

## 2. Summary

- 2.1 At the beginning of the municipal year each select committee is required to agree a work programme for submission to the Overview and Scrutiny Business Panel. The Panel considers the suggested work programmes and coordinates activities between select committees in order to maximise the use of scrutiny resources and avoid duplication.
- 2.2 The meeting on 1 March is the last scheduled meeting of the Healthier Communities Select Committee in the 2016-17 municipal year. This Committee's completed work programme is attached at appendix B. The Committee is being asked to put forward suggestions for the 2017-18 work programme.

## 3. Recommendations

- 3.1 The Select Committee is asked to:
- Consider the prioritisation process and priorities themes for the 2017/18 work programme
  - Note the completed work programme attached at **appendix B**
  - Review the issues covered in the 2016-17 municipal year
  - Take note of the key decisions attached at **appendix C**
  - Consider any other matters that it may wish to suggest for future scrutiny, including topics for in-depth review.
  - Note the draft work programme for 2017-18 attached at **appendix D**

## 4. Healthier Communities Select Committee 2016-2017

- 4.1 The Healthier Communities Select Committee had 8 meetings in the 2016-17 municipal year:
- 19 April 2016
  - 18 May 2016
  - 28 June 2016
  - 13 September 2016
  - 18 October 2016
  - 24 November 2016
  - 12 January 2017
  - 1 March 2017

4.2 Along with all other select committees, in 2016-17 the Healthier Communities Select Committee has devoted considerable attention to reviewing savings proposals put forward as part of the Lewisham Future Programme.

## **5. Prioritising and planning for 2017-18**

5.1 Eight meetings will be scheduled for the 2017-18 municipal year. The Committee is asked to consider a draft work programme report for 2017-18 for members to review, revise and agree (see appendix D). The draft work programme takes account of the Committee's previous work and incorporates:

- the scrutiny prioritisation process and potential key themes and priorities for 2017-18
- issues arising as a result of previous scrutiny;
- issues that the Committee is required to consider by virtue of its terms of reference;
- items requiring follow up from Committee reviews and recommendations;
- issues suggested by members of the public;
- petitions;
- standard reviews of policy implementation or performance, which is based on a regular schedule;
- suggestions from officers;
- decisions due to be made by Mayor and Cabinet.

### Council finances

5.2 The Council has already made savings of £138.4m to meet its revenue budget requirements since May 2010 and is proposing further savings of £23.2m in 2017/18. It is expected that the Council will need to identify further savings of circa £32.6m for the following two years, 2018/19 to 2019/20. This will bring the total savings in cash terms made by the Council in the decade to 2020 to just short of £200m. Monitoring the impact of savings on service delivery and performance will continue to be of importance to scrutiny committees. Lessons learnt from this process can be used to help shape the scrutiny of future savings proposals as and when they are put forward.

### 5.3 Budgetary issues of particular relevance to the work of the Committee

- The continuation of the adult social care precept. For 2017/18 councils have the additional flexibility to raise the precept by up to 3% in 2017/18 and 2018/19, but by no more than 6% in total up to 2019/20. For Lewisham, adding 3% for the precept to Council Tax in 2017/18 will provide an additional £2.68m in 2017/18.
- Adult social care continuing to be a "volatile budget area" for the council. Out of a projected overspend of £11.6m for the council, £2.5m of this relates to adult social care. This overspend is due to a number of factors, including the increased costs of residential care for older adults.
- Among the budget risks identified for 2017/18 is transition from children's to adults' social care as the council experiences an increase in the transfer of high-cost packages and placements for young people with a learning disability. The

numbers of the most elderly in the borough also appears to be increasing, along with their needs and the costs of providing them. The 2016/17 forecast for adult services is an overspend of £3.5m.

- The Better Care Fund in 2017/18. The value of the Better Care Fund for Lewisham in 2016/17 is £21.218m, out of a national total of £3.9bn. The 2017/18 plan is currently being developed, but any local increase is likely to be limited to an adjustment for inflation.
- The Public Health Grant in 2017/18. In 2016/17 the Council's allocation for Public Health Grant is £25.298m. National reductions of 2.6% annually have been announced for the next three financial years and the 2017/18 Lewisham allocation is £24.967m. There is also a £260k shortfall in savings which will need to be managed in 2017/18 or addressed with other savings due in 2017/18.
- In 2017/18 the Government is also redirecting of money from the New Homes Bonus scheme to an "improved Better Care Fund". This is intended for meeting the costs of social care and supporting integration work between health and social care. The funding for Lewisham is expected to be £1.2m in 2017/18.

#### Broader issues of particular relevance to the work of the Committee

5.4 From discussion with officers and the Chair, and from reviewing the items looked at over the course of the 2016-17 work programme, there are a number of issues that the committee may wish to consider for scrutiny over 2017-18:

- **Sustainability and transformation plans**  
The south-east London STP was submitted to NHS England last October and has since been published. The STP sets out plans for health and local government partners across six boroughs to jointly address the financial challenges faced by the health economy in south-east London. It sets out proposed changes in a number of areas, including community-based care, specialist care and provider collaboration. Consultation on the proposed consolidation of elective orthopaedic sites across south-east London is expected to start in spring this year. Scrutiny of the STP will continue to be carried out through the south-east London JHOSC, with updates to HCSC.
- **Devolution pilot**  
Lewisham's devolution pilot business case was submitted last October. It's focused on gaining greater freedoms around estates and workforce that could accelerate the transformation of community-based care. This includes changing how buildings are used so staff can be co-located and finding ways to create new, combined health and social care roles. The latest business case also included a request for transformation funding from the One Public Estate programme. Devolved arrangements are expected to be in place by April 2018. A progress update from officers is expected early in the new municipal year.
- **Neighbourhood care networks and place-based care**  
NCNs are a key part of the integration of health and adult social care services in Lewisham. They are intended to improve the connections between services within communities through multidisciplinary working. The NCN model has been in development since 2014. Next steps in 2017 are expected to include a more

detailed communications and engagement plan to explain what health and care services will be delivered at a local level and how better links can be made across the system.

Following the Committee's 2016-17 in-depth review of the integration of health and adult social care, part of which touched upon neighbourhood care networks, the Committee will also receive an update related to this at some point.

- **Transition from children's to adult social care**

As mentioned above, the transition for children's to adults' social care has been identified as a budget risk for 2017/18. The committee is due to receive an update from officers at this meeting about the council's plans for addressing the pressures in this area and developing an approach to managing transitions jointly and smoothly between children's and adults' social care. The committee is expected to receive a progress update later in the year. Members from the CYP committee will also be invited.

- **CQC inspections**

The committee has previously received regular updates from the CQC on the findings of local inspections. This year the committee will be receiving an update from the manager of adult social care inspections in Lewisham. This will be a general update setting out any themes and trends from recent inspections. Committee members are free to put forward any specific requests in advance. The committee will also be aware that there is a comprehensive inspection of the Lewisham and Greenwich NHS Trust planned for March. This will include Lewisham Hospital and eleven community sites across the borough.

- **Healthwatch priorities**

Healthwatch Bromley and Lewisham have stated that their priorities for 2017/18 are mental health, children and young people's wellbeing, and access to services. They are also planning a significant piece of work on social care which will include "Enter & View" to a number of care homes, discharge from hospital and access to assessments. Healthwatch expect to have completed this work by May this year.

## **6. Healthier Communities Select Committee terms of reference**

- 6.1 The Council's constitution sets out the Committee's powers, as defined by the terms of reference. These are included at **appendix A**. The Committee should familiarise itself with the terms of reference and consider its remit when selecting items for scrutiny.
- 6.2 The Council's constitution sets out the Committee's powers, based on the legal underpinning of the Council's Overview and Scrutiny Committee by legislation: in particular the NHS Act 2006 as amended, the Health and Social Care Act 2012, the Care Act 2014 and regulations made under that legislation, and any other legislation in force from time to time. The Committee has the ability to call decision makers to account for a decision or any series of decisions made. The Committee may also decide to call officers from partner organisations to answer questions about the delivery of health care services in the borough.

6.3 The Committee's role is to examine issues relating to, but not limited to, matters such as: public health; adult social care; services for disabled people; day care provision; delivery of healthcare by partners.

6.4 The Committee is also required to review proposals for substantial changes in services and decide whether or not consultation is required in the instance that those changes will have a significant impact on local people.

## **7. Financial Implications**

There are no financial implications arising from the implementation of the recommendations in this report.

## **8. Legal Implications**

In accordance with the Council's Constitution, all scrutiny select committees must devise and submit a work programme to the Business Panel at the start of each municipal year.

## **8. Equalities Implications**

8.1 The Equality Act 2010 brought together all previous equality legislation in England, Scotland and Wales. The Act included a new public sector equality duty, replacing the separate duties relating to race, disability and gender equality. The duty came into force on 6 April 2011. It covers the following nine protected characteristics: age, disability, gender reassignment, marriage and civil partnership, pregnancy and maternity, race, religion or belief, sex and sexual orientation.

8.2 The Council must, in the exercise of its functions, have due regard to the need to:

- eliminate unlawful discrimination, harassment and victimisation and other conduct prohibited by the Act
- advance equality of opportunity between people who share a protected characteristic and those who do not.
- foster good relations between people who share a protected characteristic and those who do not.

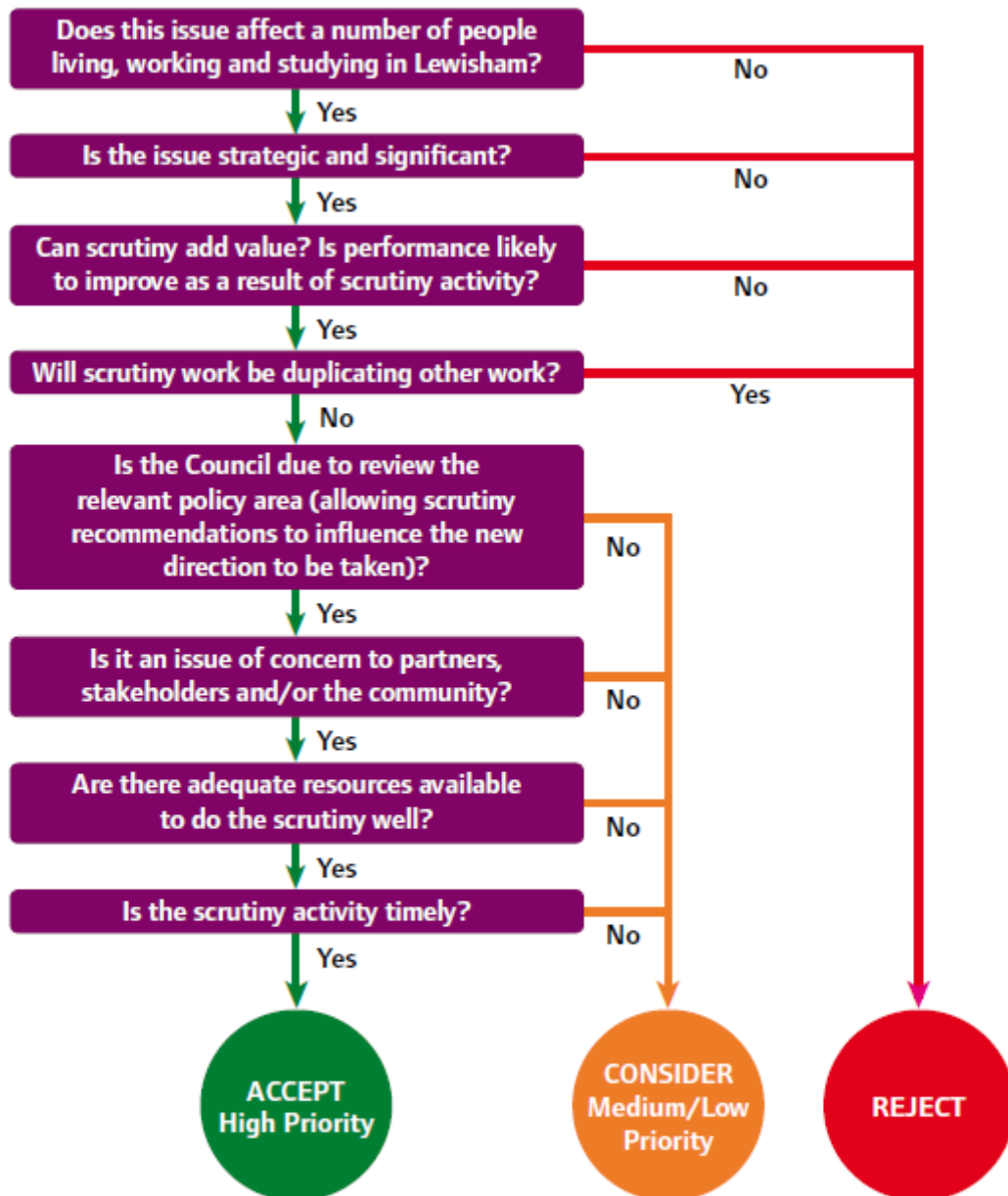
8.3 There may be equalities implications arising from items on the work programme and all activities undertaken by the Select Committee will need to give due consideration to this.

## **Background Documents**

Lewisham Council's Constitution

Centre for Public Scrutiny: the Good Scrutiny Guide

## Scrutiny work programme – prioritisation process



## Appendix A

### Healthier Communities Select Committee terms of reference

(a) To fulfill all of the Overview and Scrutiny functions in relation to the provision of service by and performance of health bodies providing services for local people. These functions shall include all powers in relation to health matters given to the Council's Overview and Scrutiny Committee by any legislation but in particular the NHS Act 2006 as amended, the Health and Social Care Act 2012, the Care Act 2014 and regulations made under that legislation, and any other legislation in force from time to time. For the avoidance of doubt, however, decisions to refer matters to the Secretary of State in circumstances where a health body proposes significant development or significant variation of service may only be made by full Council.

(b) To review and scrutinise the decisions and actions of the Health and Wellbeing Board and to make reports and recommendations to the Council and/or Mayor and Cabinet.

(c) To review and scrutinise in accordance with regulations made under Section 244 NHS Act 2006 matters relating to the health service in the area and to make reports and recommendations on such matters in accordance with those regulations

(d) Require the attendance of representatives of relevant health bodies at meetings of the select committee to address it, answer questions and listen to the comments of local people on matters of local concern.

(e) With the exception of matters pertaining to the Council's duty in relation to special educational needs, to fulfill all of the Council's Overview and Scrutiny functions in relation to social services provided for those 19 years old or older including but not limited to services provided under the Local Authority Social Services Act 1970, Children Act 2004, National Assistance Act 1948, Mental Health Act 1983, NHS and Community Care Act 1990, NHS Act 2006, Health and Social Care Act 2012 and any other relevant legislation in place from time to time.

(f) To fulfill all of the Council's Overview and Scrutiny functions in relation to the lifelong learning of those 19 years or over (excluding schools and school related services).

(g) To receive referrals from the Healthwatch and consider whether to make any report/recommendation in relation to such referral (unless the referral relates solely to health services for those aged under 19 years of age, in which case the referral from the Healthwatch should be referred to the Children and Young People Select Committee .

(h) To review and scrutinise the Council's public health functions.

(i) Without limiting the remit of this Select Committee, its terms of reference shall include Overview and Scrutiny functions in relation to: people with learning difficulties; people with physical disabilities; mental health services; the provision

of health services by those other than the Council; provision for elderly people; the use of Section 75 NHS Act 2006 flexibilities to provide services in partnership with health organisations; lifelong learning of those aged 19 years or more (excluding schools and school related services); Community Education Lewisham; other matters relating to Health and Adult Care and Lifelong Learning for those aged 19 years or over.

(j) Without limiting the remit of the Select Committee, to hold the Executive to account for its performance in relation to the delivery of Council objectives in the provision of adult services and health and lifelong learning.

**NB** In the event of there being overlap between the terms of reference of this select committee and those of the Children and Young People Select Committee, the Business Panel shall determine the Select Committee which shall deal with the matter in question.