

# Update for Healthier Communities Select Committee – 16.04.13

**Lynn Saunders (SRO)**

April 2013

1

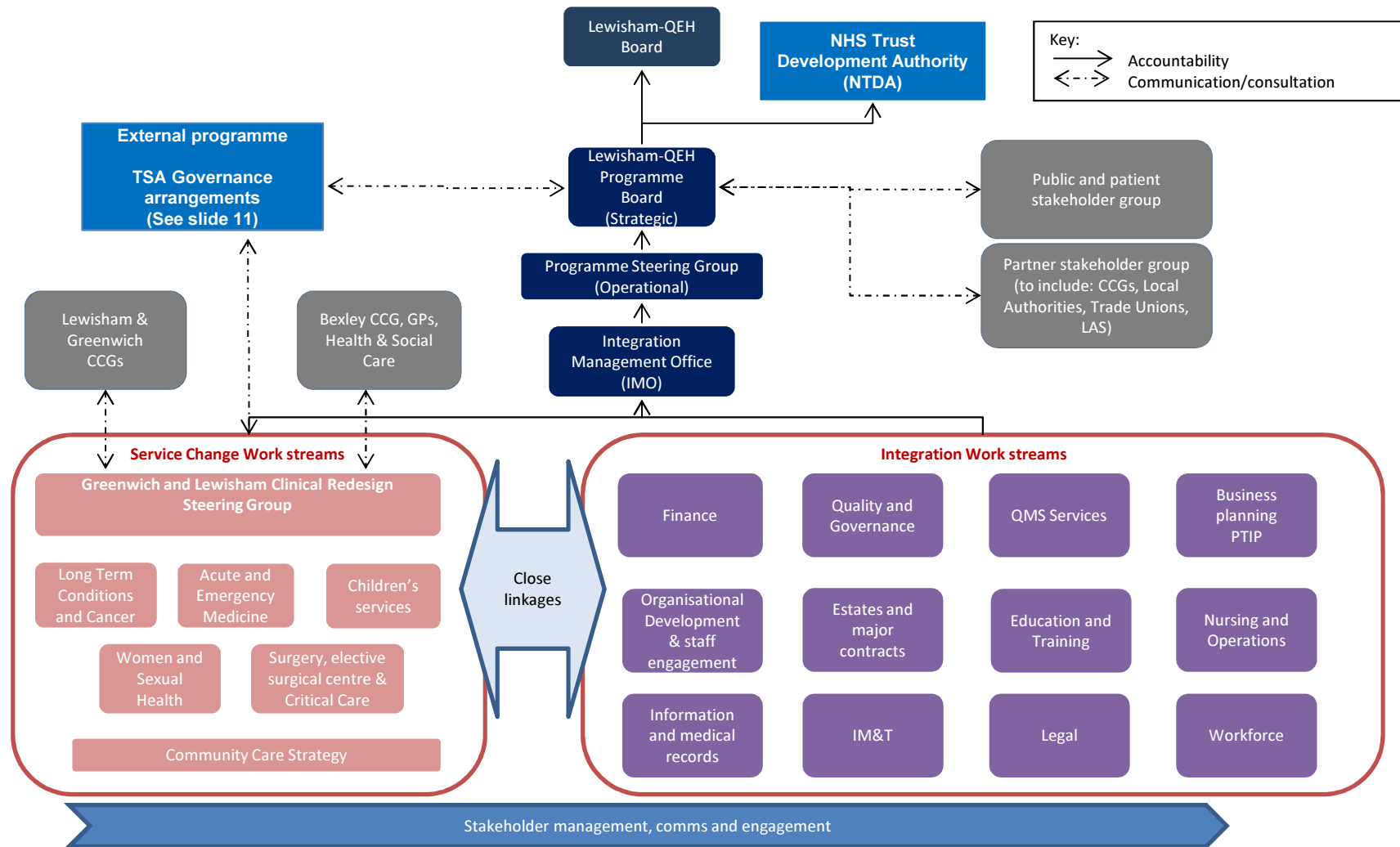


## Following publication of the Secretary of State's Decision:

- The Trust is working to understand the full implications of the decisions, which differ from the Trust Special Administrator's (TSA) proposals
- Clinicians are leading a review of the Trust's clinical strategy
- The ongoing Judicial Reviews mean that nothing can be implemented that is not reversible
- The Trust did express an interest in working with the Queen Elizabeth Hospital during the TSA review process
- The Trust is preparing the way for a safe and sustainable organisation to be formed from the integration of Lewisham Healthcare and Queen Elizabeth Hospital
- The Lewisham Board will become the Trust Board for the merged organisation



# Lewisham-QEH Integration Planning: Governance Structure



This governance structure will be kept under constant review to ensure fitness-for purpose for both business planning as well as integration



# Progress to date (1)

- Integration governance arrangements are now mobilised
- First Integration Programme Board has been held
- A Programme Initiation Document (PID) has been drafted which defines the programme of work required to ensure a 'safe merger' on Day 1 and the delivery of clinical service redesign through business planning activities
- Work has commenced to produce a Business Plan (Integration Plan) for merger – to be reviewed by the Trust Development Authority by the end of May
- A Post Integration Implementation Plan (PTIP) is also in development , which focuses on activities required to support a safe 'day one' transaction
- The provisional transaction date remains at 1 July but is likely to change. The TDA have appointed a Programme Director for Transactions who is currently reviewing the timetable



## Progress to date (2)

- The Programme Plan is in draft form and Day 1 critical milestones are being identified
- A Due Diligence questionnaire has been developed with legal advice, and submitted to SLHT, providing a comprehensive information request in an effort to address the lack of response to questions so far experienced
- An Integration risk log has been established, which identifies risks associated with the transaction and also risks identified for the new organisation post merger
- The proposed clinical management structure has been developed for the new organisation and shared across LHT and QEH for comment. Appointments to key roles will commence in April



## Progress to date (3): Workforce

- Staff consultation process (90 days) has commenced within SLHT, led by SLHT with the involvement of LHT and KCH HR Directors
- SLHT site based staff have been advised that they are to be 'lifted and shifted' to one of the new organisations. Staff working across sites or working for corporate teams have been advised that they are at risk and will be involved in a pre-transfer selection process
- The pre-transfer selection process includes matching using job descriptions and 'slotting in' where appropriate, followed by a competitive appointments process
- Our proposed structure has been shared with SLHT staff and job descriptions for available posts will also be shared to enable a first stage 'matching' process to be completed
- Corporate directors and teams have held open meetings in SLHT to share information about our structures and posts available as a first step in the consultation process



## Other Issues:

- There are two Judicial Reviews that have been lodged, one by the Council and one by the Save Lewisham Hospital Campaign. The outcomes of these reviews are likely to be known in May or June
- The Foundation Trust application has been paused until integration is complete
- The Trust has instigated a “Business as Usual” Campaign
- In the most recent staff survey, Lewisham is in the top 20% of like organisations for the staff recommendation of the trust as a place to work or receive treatment

**Other languages or formats**

If you would like this document in another language or format, please contact us on: 020 8334 0481

Si vous souhaitez obtenir ce document dans une autre langue ou sous un autre format ou si vous avez besoin des services d'un interprète, veuillez nous contacter.  
020 8334 0481

もしもこの文書が別の言語または形式で必要であれば、お問い合わせください。  
020 8334 0481

Jeżeli chciałby Państwo otrzymać ten dokument w innym, języku lub w innym formacie albo jeżeli potrzebna jest pomoc tłumacza, to proszę o kontakt z nami.  
020 8334 0481

၆၈၈ နေ့စဉ် အသုံးပြု ဖြစ်ပါက အသုံးပြု နေရာ သို့မဟုတ် အသုံးပြု နေရာရှိ ဆရာမ၊ ဆရာမများနှင့် ဆက်သွယ်ပါ။  
020 8334 0481

Nếu quý vị muốn có tài liệu này ở hình thức ngôn ngữ hoặc kiểu khác, hoặc nếu quý vị cần một thông dịch viên giúp đỡ, xin liên lạc với chúng tôi.  
020 8334 0481

**Useful Contact Details**

**Complaints and compliments:**

Please speak to a member of staff if you have a complaint or compliment about our services. If your complaint is not resolved to your satisfaction, please contact our Complaints Team on 020 8333 3355.

**Lewisham Healthcare Patients Advice & Liaison Service (PALS)**

PALS provides confidential advice, support, information and help for patients, their families and carers.  
Call 020 8333 3355 or email: [pals.lewisham@nhs.uk](mailto:pals.lewisham@nhs.uk)

**NHS 111 Service**

NHS 111 is a new service that is being introduced to make it easier for you to access local NHS healthcare services. You can call 111 when you need fast medical help but it is not a 999 emergency.

You can also find health advice and support on the NHS Direct website: [www.nhsdirect.nhs.uk](http://www.nhsdirect.nhs.uk)

**Trust Website:** [www.lewisham.nhs.uk](http://www.lewisham.nhs.uk)  
**Twitter:** @LewishamNHS  
**Facebook:** search for Lewisham Healthcare

**BUSINESS AS USUAL**

**OPEN**

Lewisham Hospital continues to deliver high-quality services in state-of-the-art facilities.





# Lewisham-QEH Integration Planning

## TSA Programme Governance Arrangements

### For Information

April 2013

8





# TSA Programme Governance

