

Objector 19 Supporting Evidence

Objection to Blackheath Creatives Licensing Application

Appendix with additional support images and information



Aerial view to show Blackheath Creatives garden space and its proximity to residential properties, highlighting how close the disturbance is to our homes.

WEMYSS ROAD

WYATT HOUSE
- RESIDENTIAL BLOCK

GROVE HOUSE
- RESIDENTIAL BLOCK

THE POINT APARTMENTS
- RESIDENTIAL BLOCK

PRIVATE
HOMES &
GARDENS

RESIDENTIAL FLATS
ABOVE SHOPS

BACK GATE EXIT
FROM BC GARDEN
INTO PRIVATE LAND
PEOPLE LEAVE UP THE
PRIVATE ROAD BETWEEN
THE POINT &
OTHER RESIDENCES

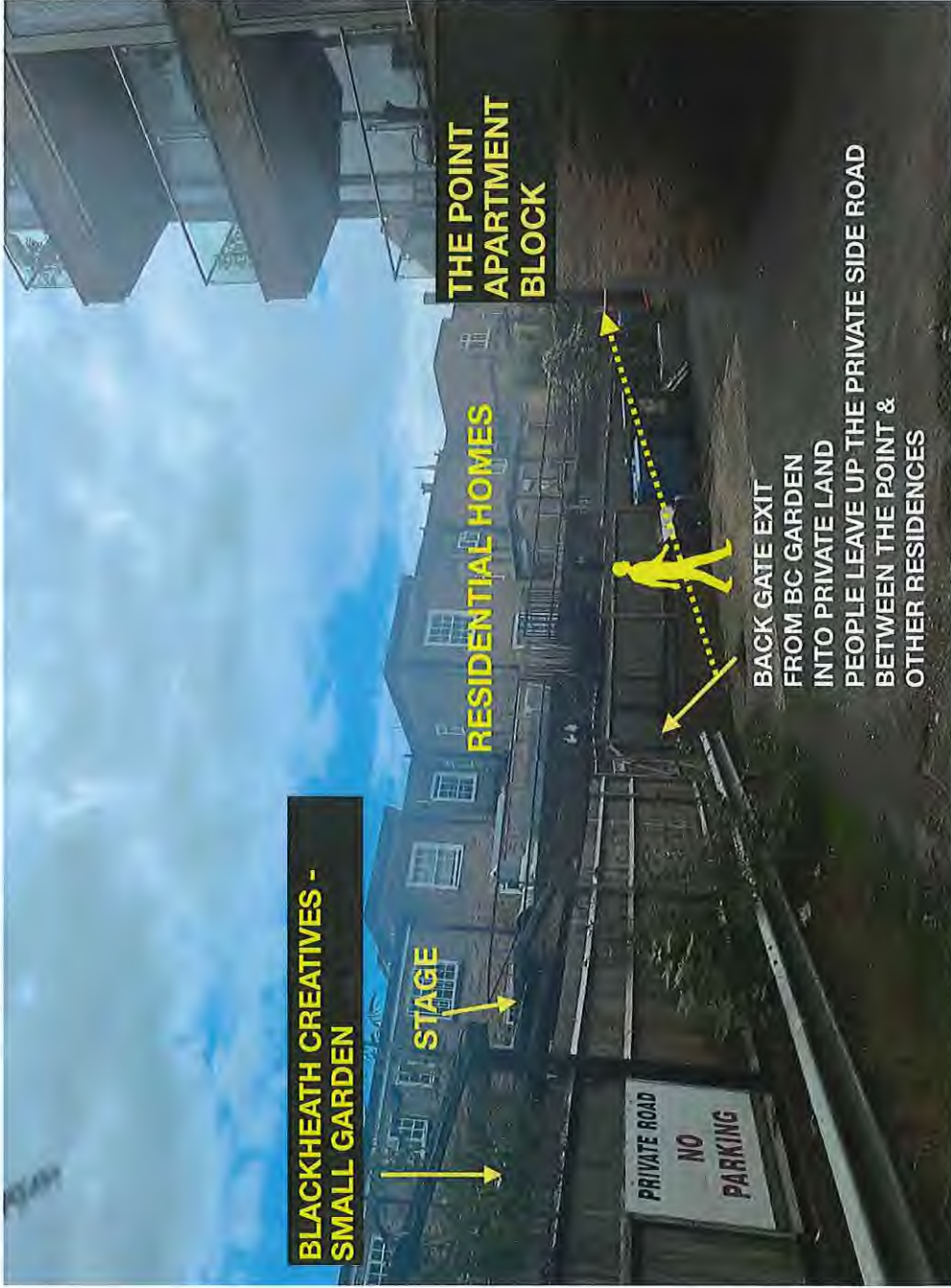
BlackheathCreatives
GARDEN
OUTSIDE
MUSIC EVENTS

RESIDENTIAL FLATS
ABOVE SHOPS

Blackheath
Creatives Pop Up

SOLD BY PRIVATE AUCTION
KEEP CLEAR

SOLD BY PRIVATE AUCTION
KEEP CLEAR



IN EVENINGS PATRONS LEAVE THE BLACKHEATH CREATIVES GARDEN VIA THE BACK GATE AND PROCEED UP THE PRIVATE SIDE ROAD ONTO WEMYSS ROAD



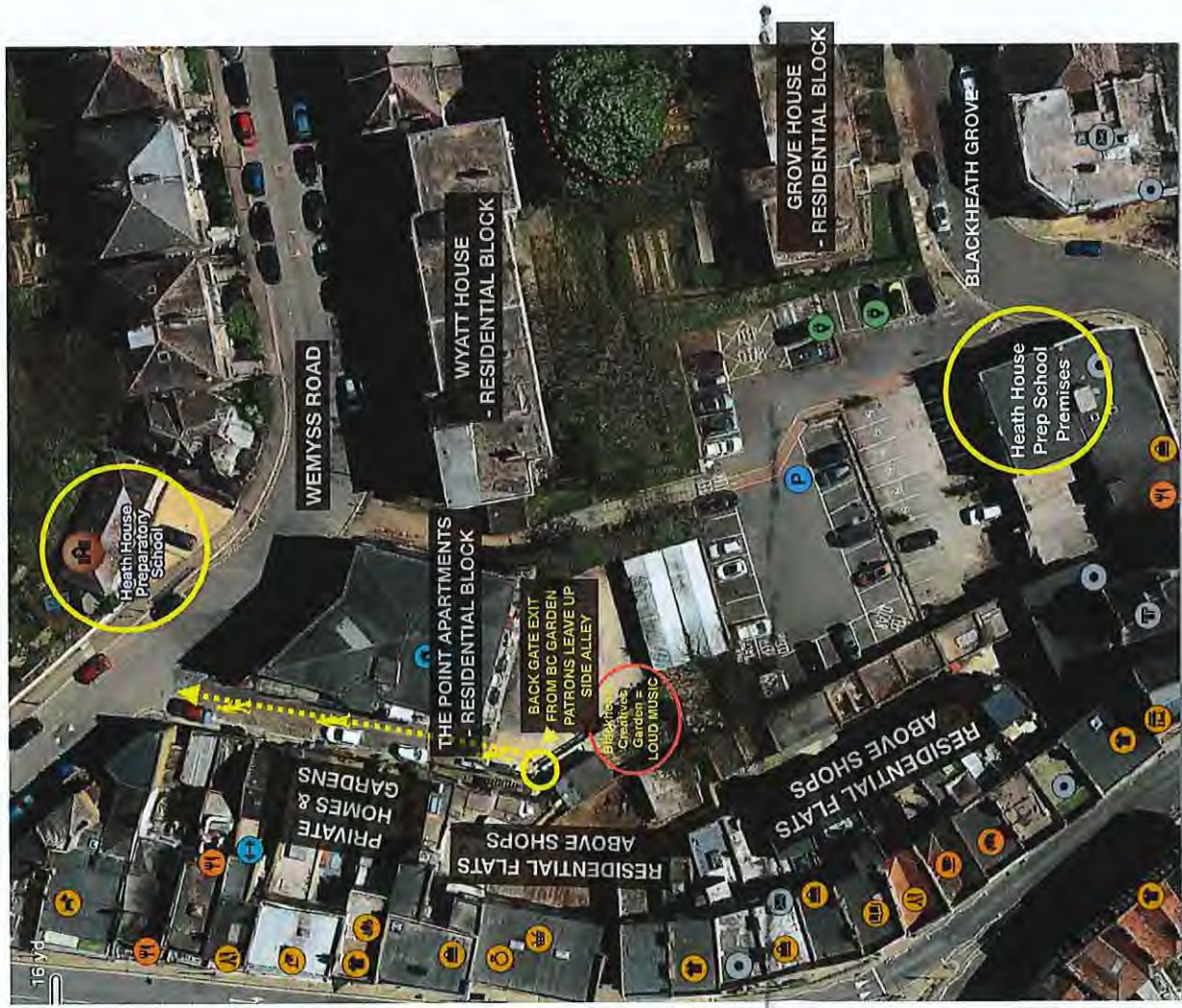


STAGE IN BLACKHEATH CREATIVES GARDEN



image from Blackheath Creatives Facebook page so GDPR compliant

View to the Blackheath Creatives small garden space used to host loud outdoor music events. Demonstrating the very close proximity to residents



As well as all the residents in close proximity to the garden being affected.

The music from the garden travels far beyond the event space, reaching across the public car park at Blackheath Grove and to the Blackheath Prep School premises there, which will operate school business during some evenings and weekends.

Loud music, sometimes containing explicit lyrics, can be heard by anyone in the vicinity, including any children passing through the car park area. This inappropriate noise disrupts not only residents in the immediate area but also the wider community, affecting families, school visitors, and anyone near the car park

Example of a club promoter interested in holding a dance music event in the Blackheath Creatives garden if they're given the licence

Here's a link to the type of event and music this would entail - publicly available on Facebook so GDPR compliant

~~https://www.facebook.com/...~~

5w Like Reply



~~Jo D Wells~~
I'm a promoter, and would be honoured to put on an annual or one off all dayer if they get the licence! Older respectful crowd **Smitten Parties** ... started out at the Cellars of the ~~...~~ on Trafalgar Road, Greenwich in 2008... still going! x

5w Like Reply

