

# **LAND TO THE EAST SIDE OF 68 RAVENSBOURNE PARK CRESCENT SE6 4YP**

Application Ref. DC/24/135333

**Construction of 5 two-storey dwellinghouses, together with cycle parking, refuse storage and associated landscaping on Land to the East of 68 Ravensbourne Park Crescent SE6.**

**Existing site**

# Site location



# Existing site conditions



East



West



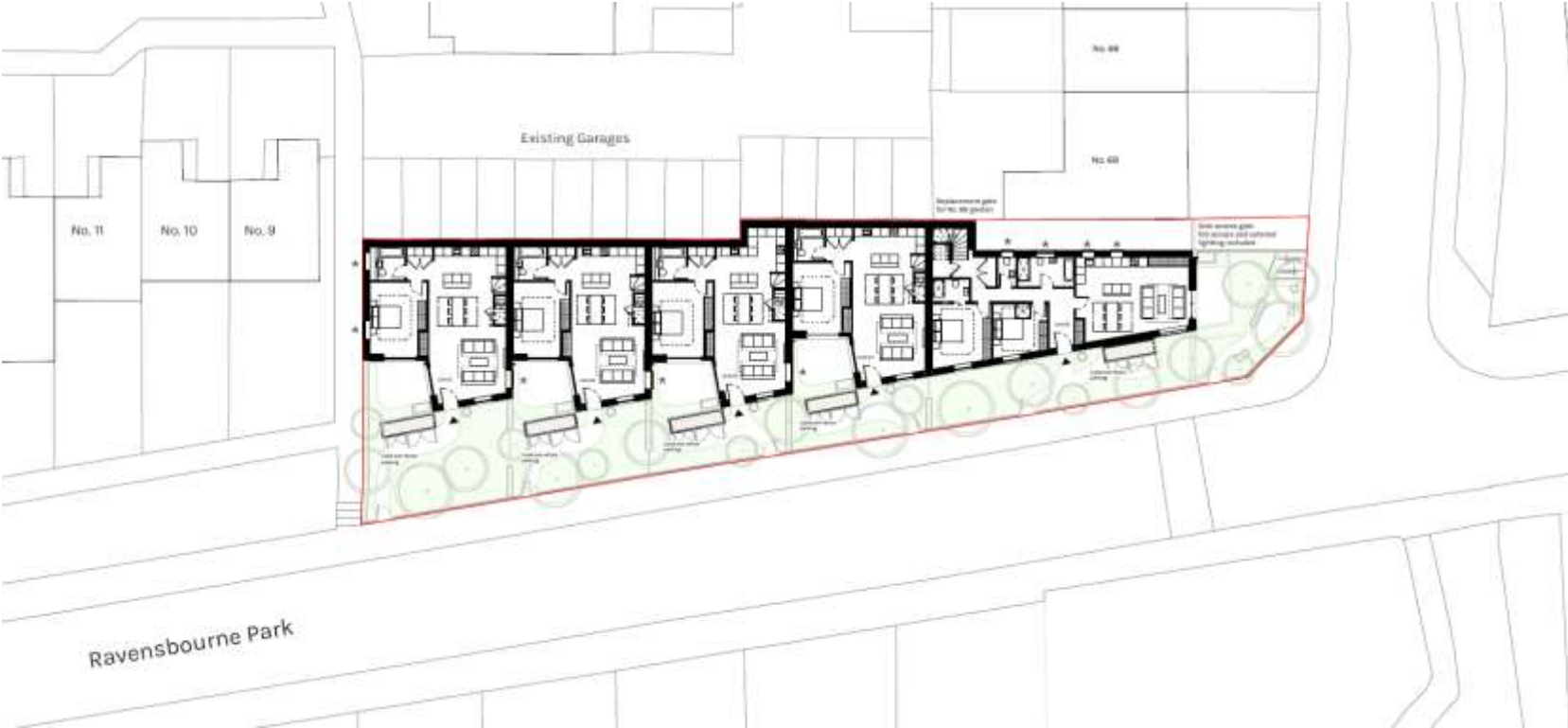
North

# Street view



**Proposal**

# Proposed site plan





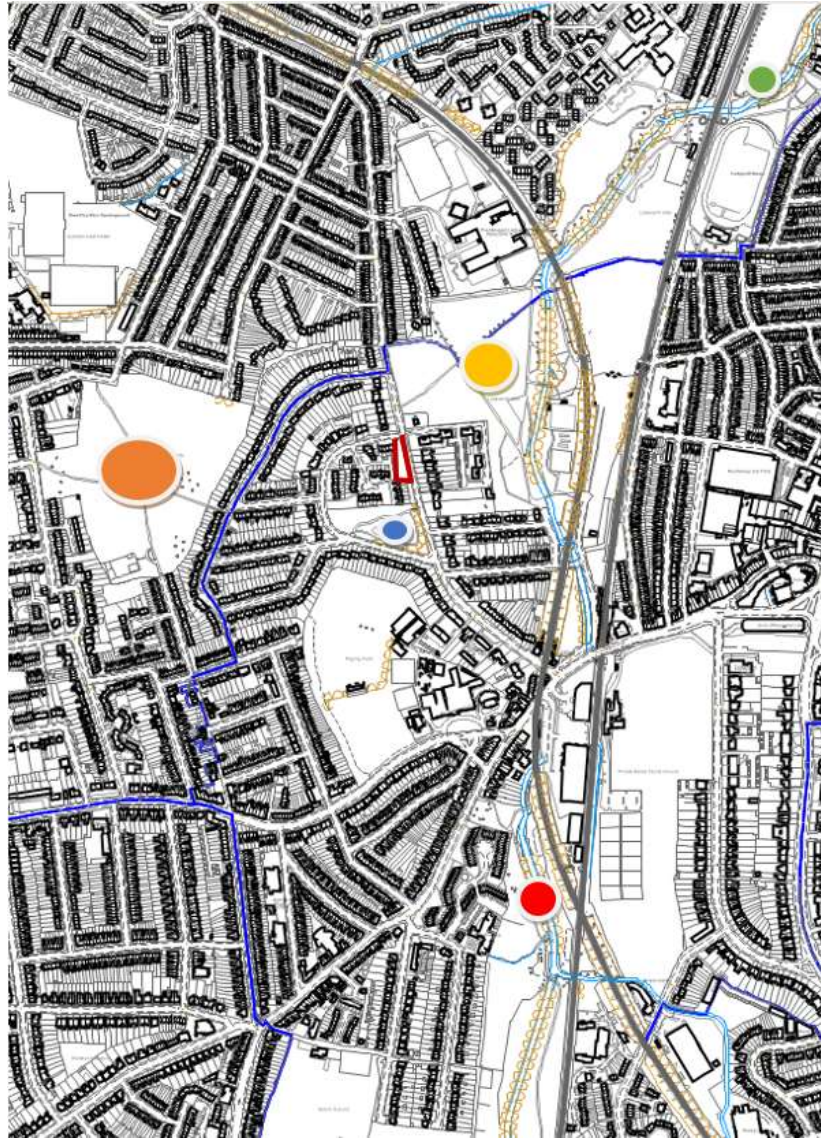
# Illustration of development from south-east



# Illustration of development from north-east



# Park plan



Blue – Ravensboure  
Park Gardens

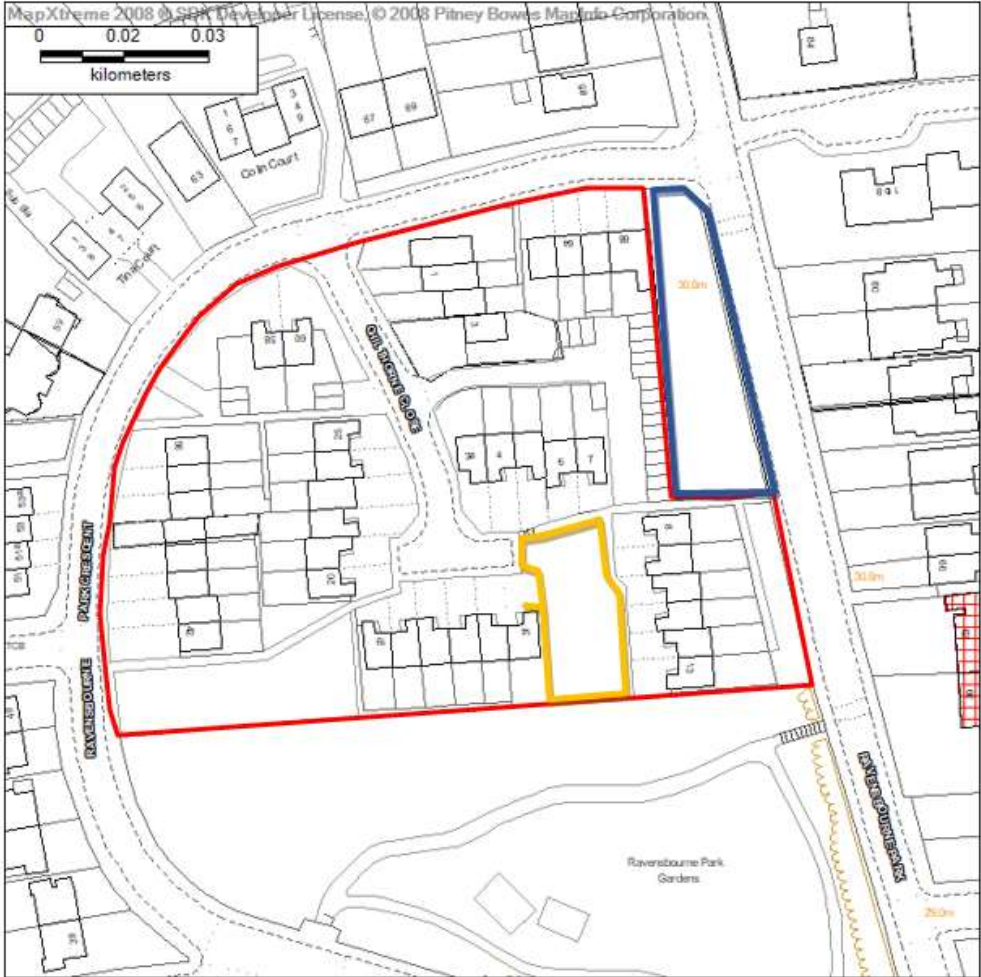
Orange – Blythe Hill  
Fields

Yellow – Ladywell Fields

Green – Ladywell  
childrens playground

Red – River Pool Linear  
Park

# Site Plan



Chilthorne Close Estate outlined in red.

Application site outlined in blue.

Land to the east of 14 Chilthorne Close outlined in yellow.

**End**