

UNIT 1, ASHBY MEWS, LONDON, SE4 1TB

Application No. DC/23/132001

This presentation forms no part of a planning application
and is for information only.

Partial demolition of the front of the existing light industrial (Use Class E) building and alteration and extension to provide a terrace of 4 two-storey, live/work units (Use Sui Generis), together with the provision of private amenity space, associated cycle parking and refuse collection facilities at Unit 1 Ashby Mews SE4.

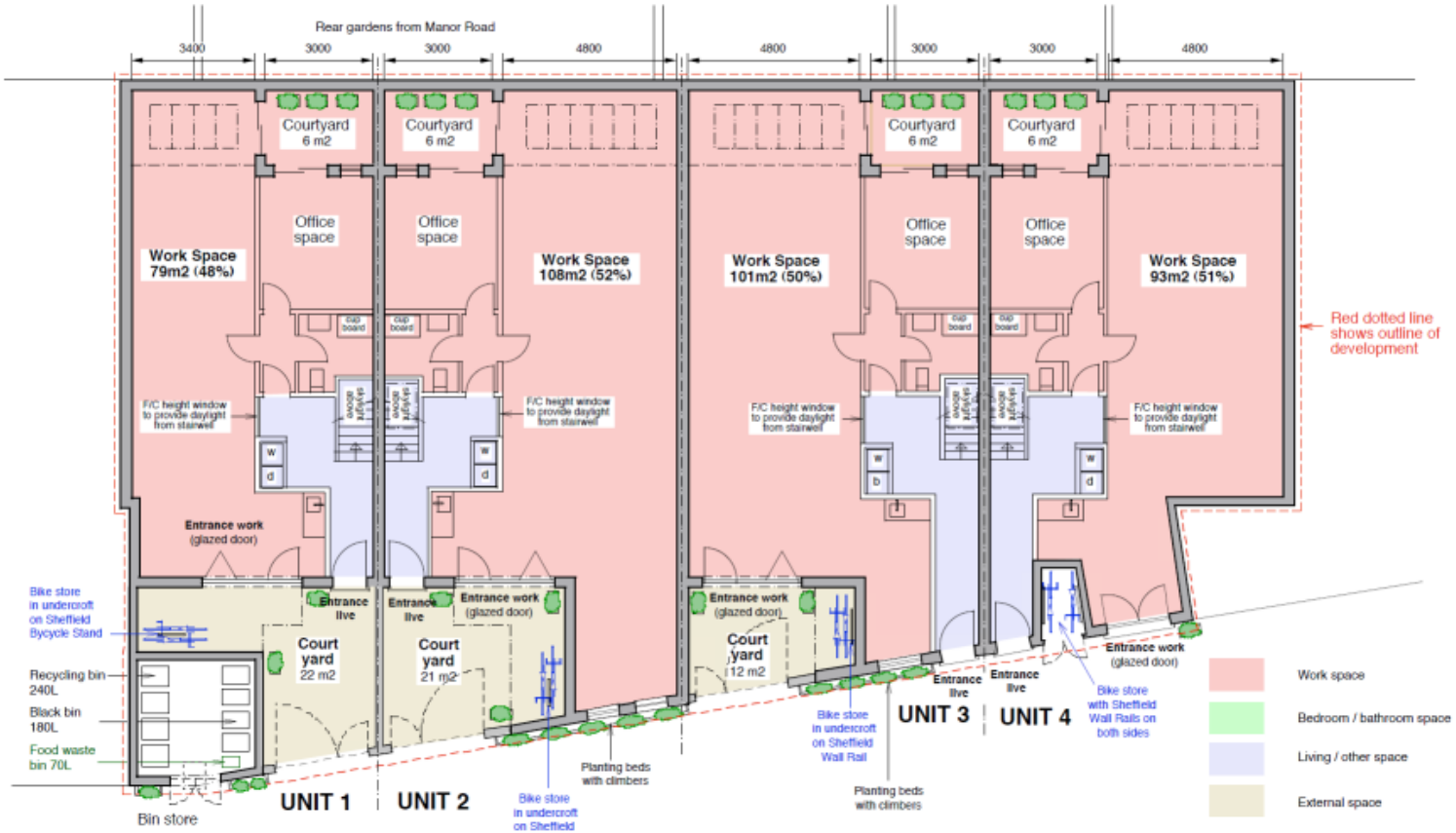


Site location plan

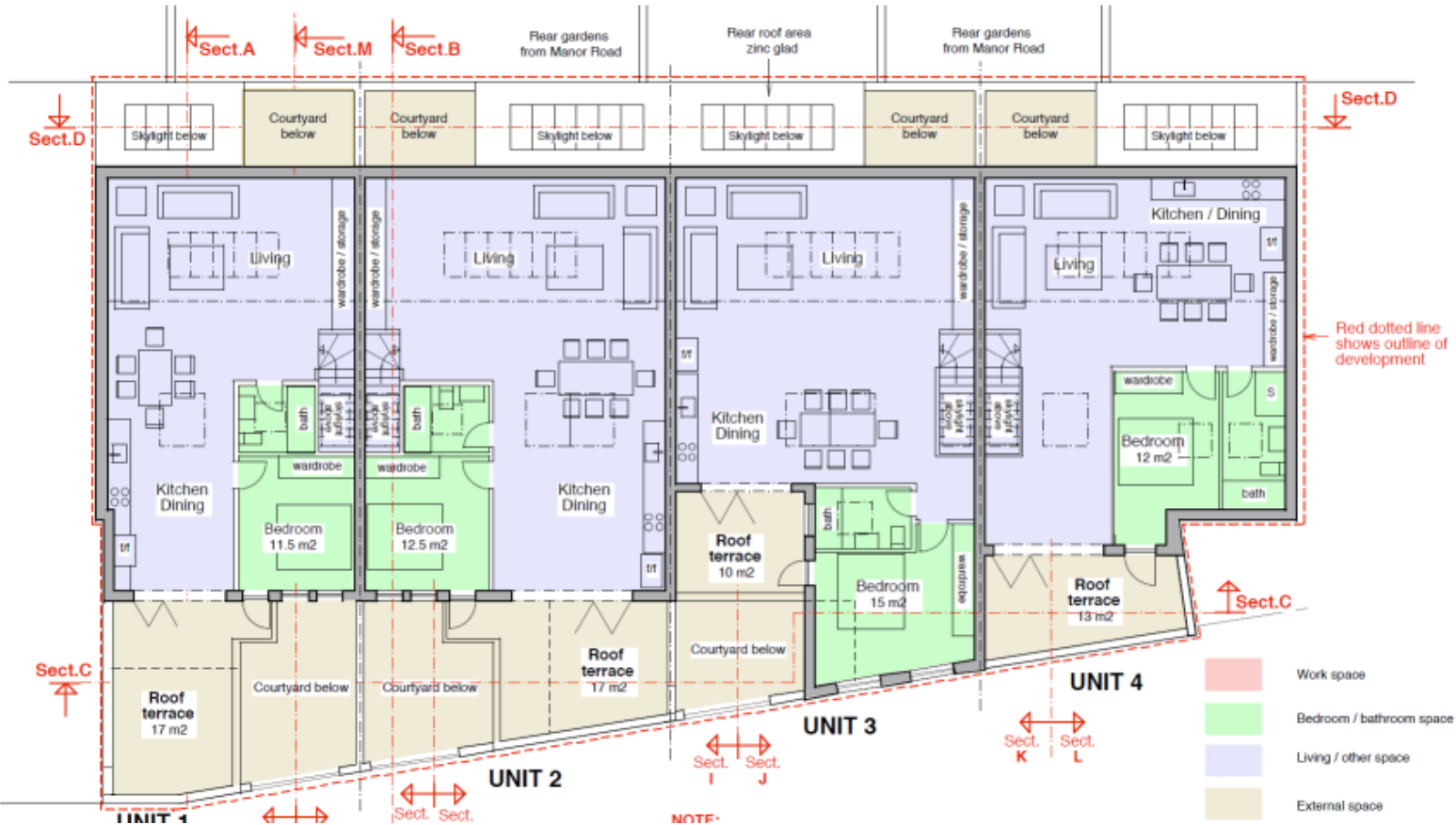
Existing site photos



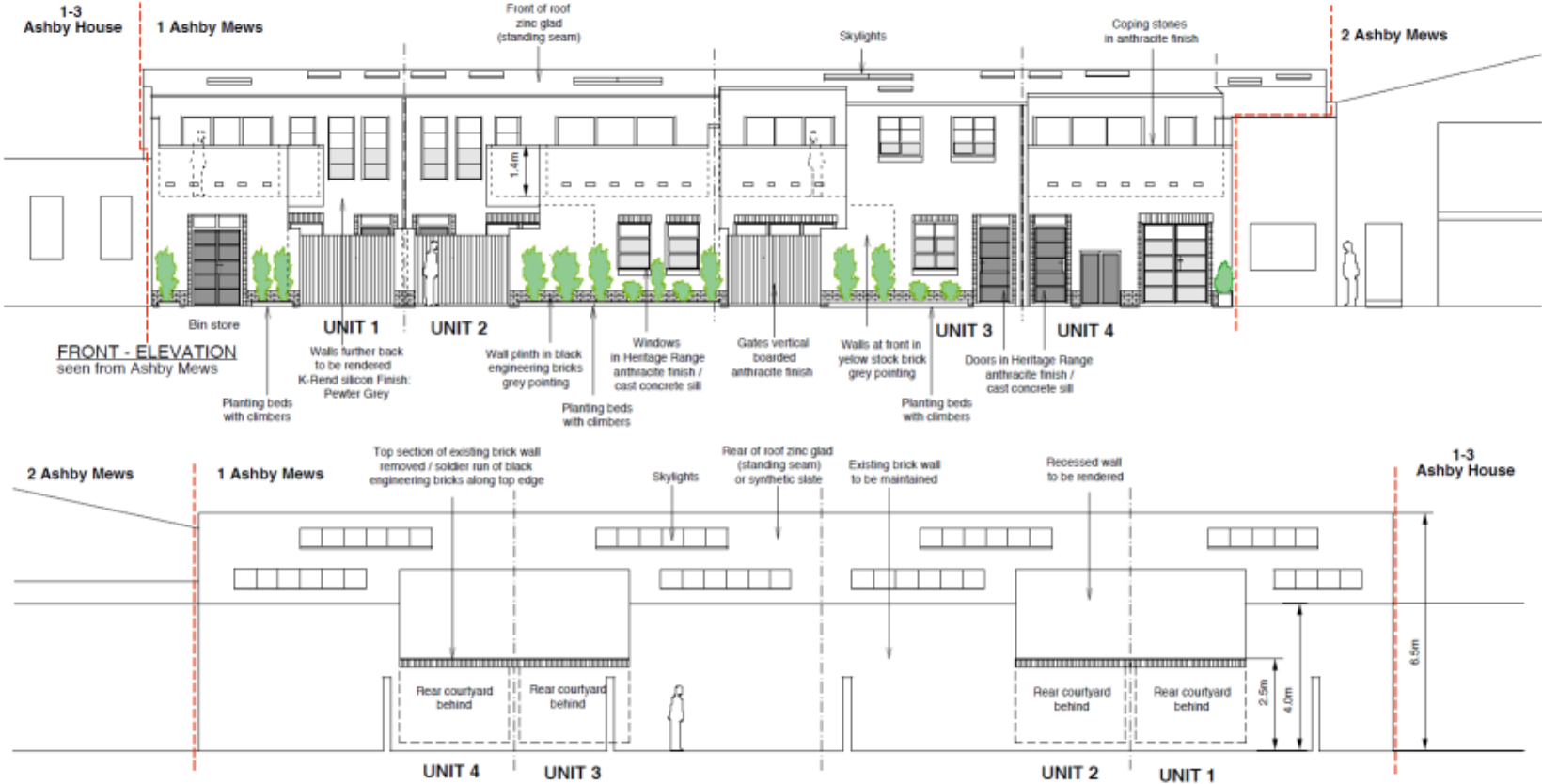
Proposed ground floor plan



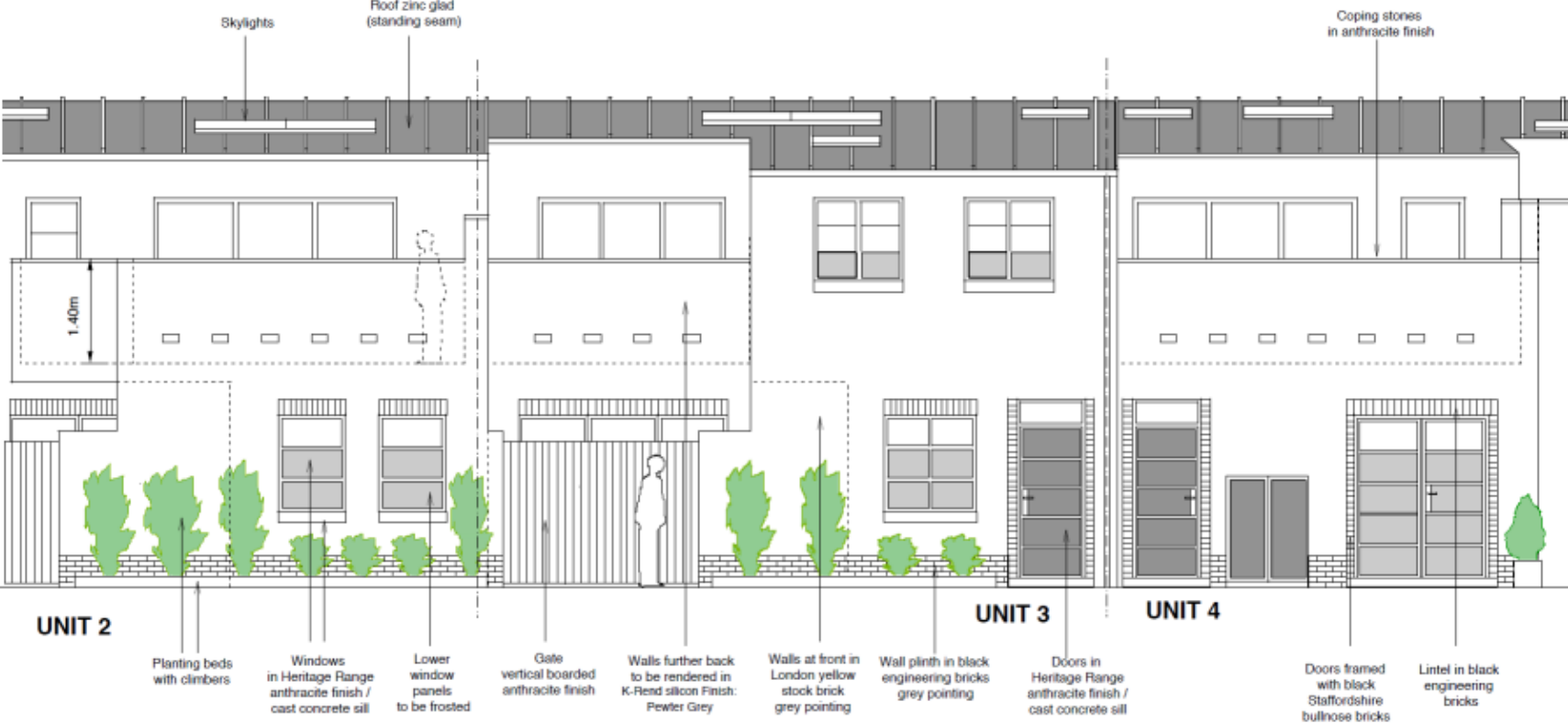
Proposed first floor plans



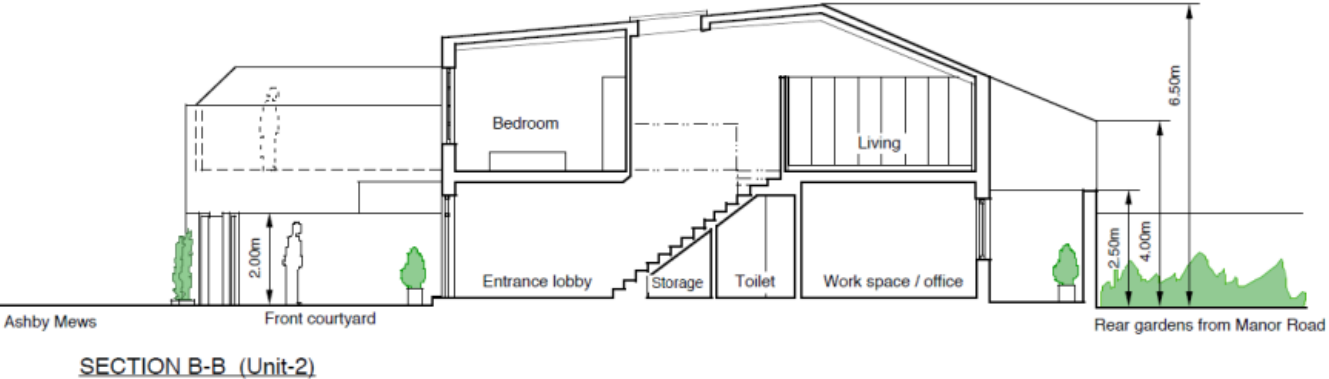
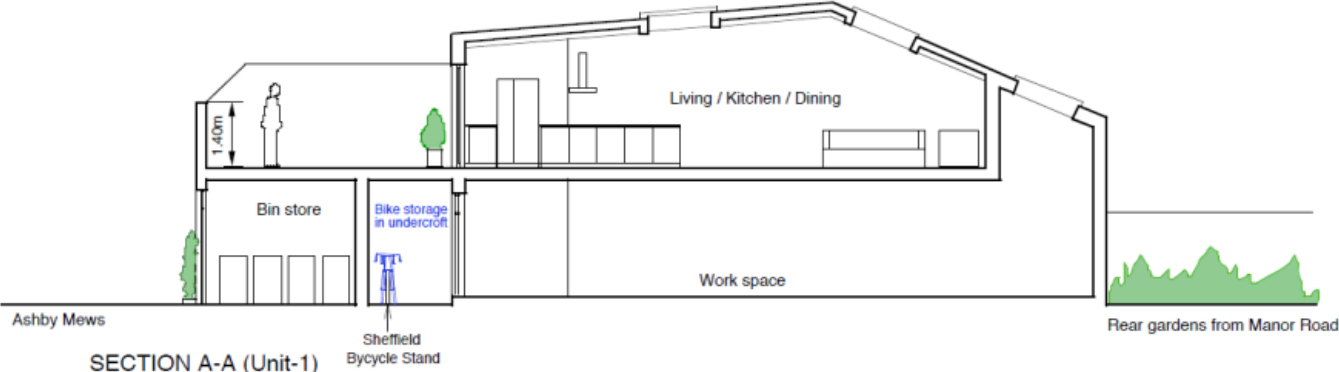
Proposed elevations



Proposed elevations



Proposed sections



Proposed Scheme



Key planning consideration

- Principle of Development;
- Urban Design and Impact on Heritage Assets;
- Impact on Neighbouring Amenity
- Transport Impact
- Sustainable Development
- Natural Environment