



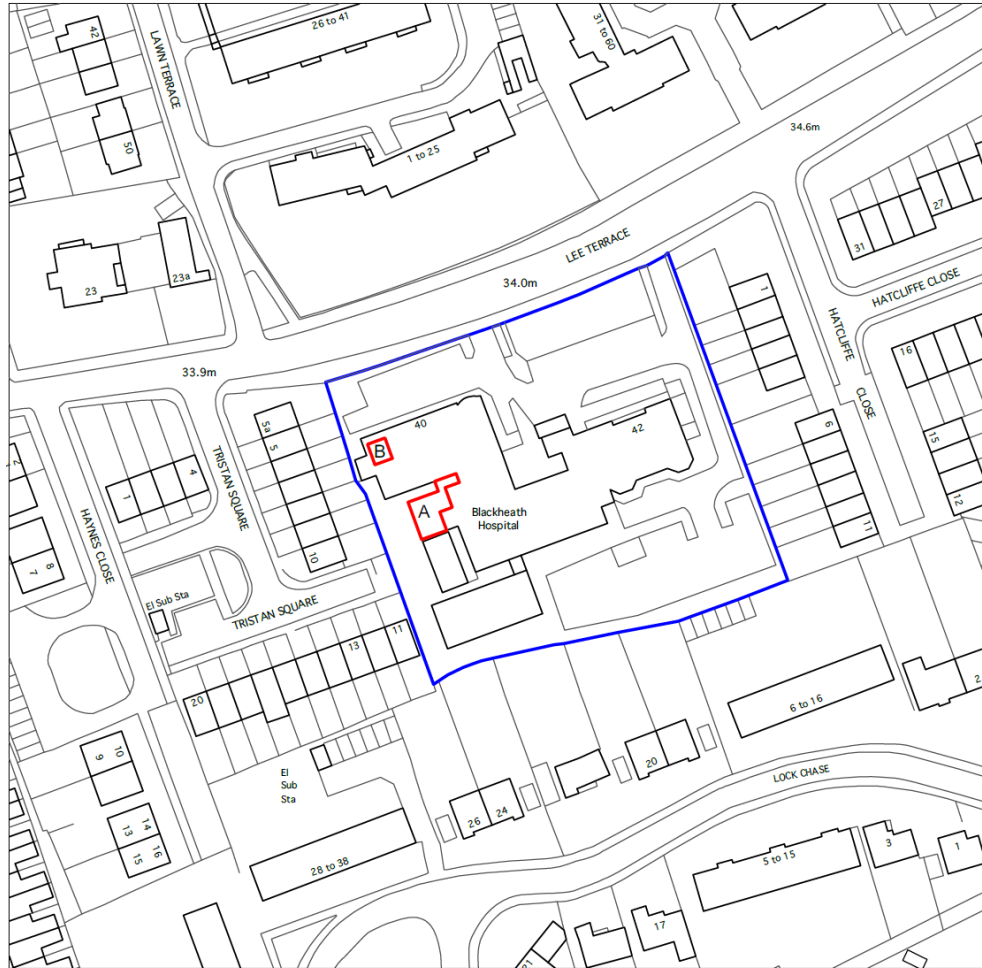
Lewisham

BLACKHEATH HOSPITAL, 40-42 LEE TERRACE, LONDON, SE3 9UD

Application No. DC/22/128708

This presentation forms no part of a planning application
and is for information only.

Application submitted under Section 73A of the Town & Country Planning Act 1990 (as amended) for a variation of condition to planning permission DC/21/123944 dated 27 April 2022 to vary the wording of Condition 2 (approved plans) in order to cover alterations to the size of some of the equipment on the rear flat roof, install 3m high visual screening and provide a steel walkway on the rear flat roof to provide maintenance access to the equipment at Blackheath Hospital, 40-42 Lee Terrace SE3.

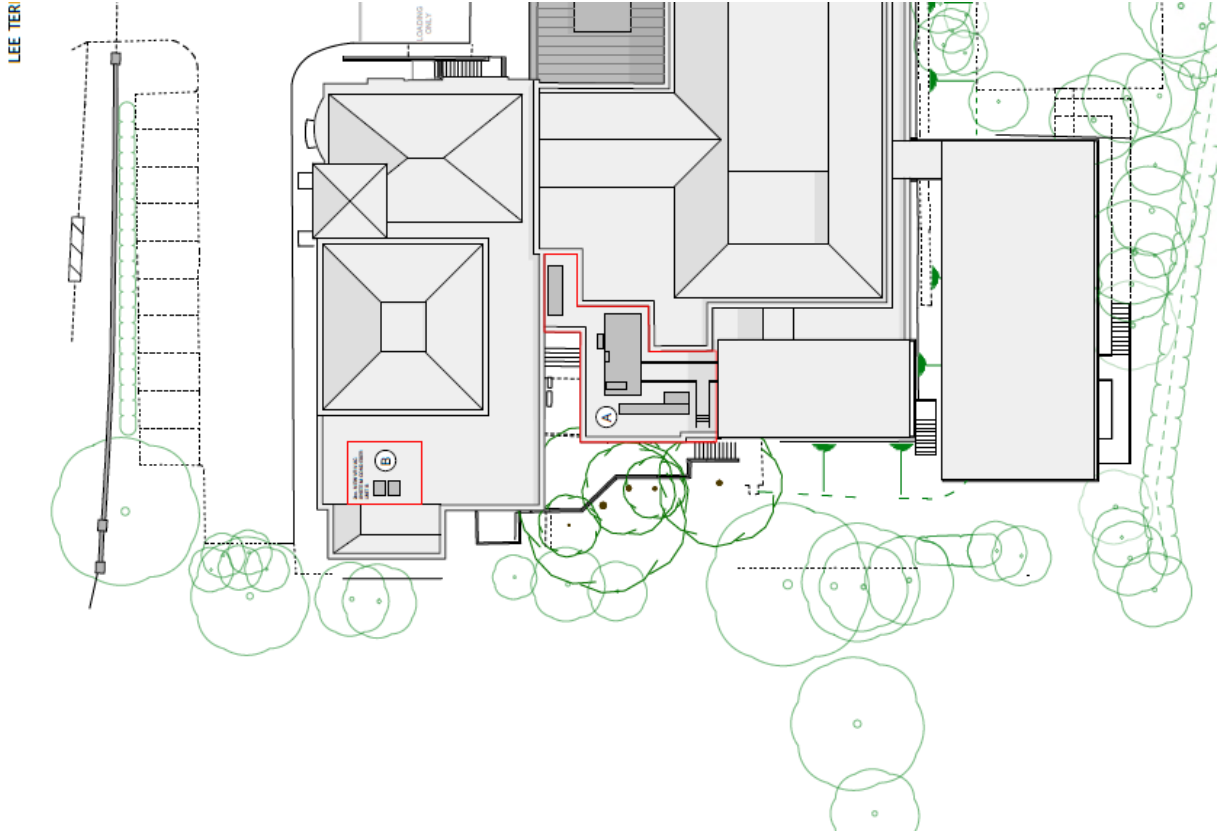


Site Location Plan

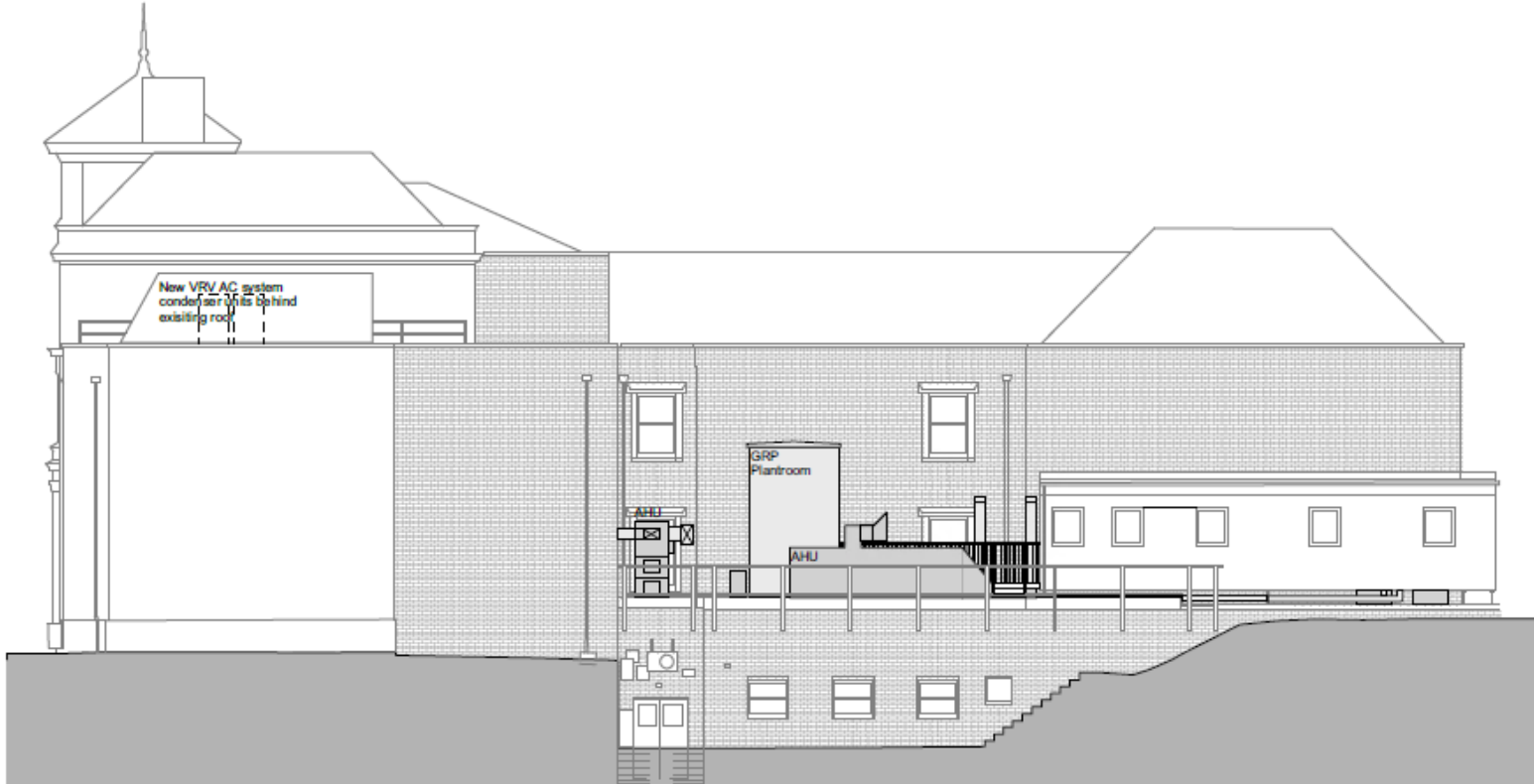
Existing Aerial View



Proposed Site Plan



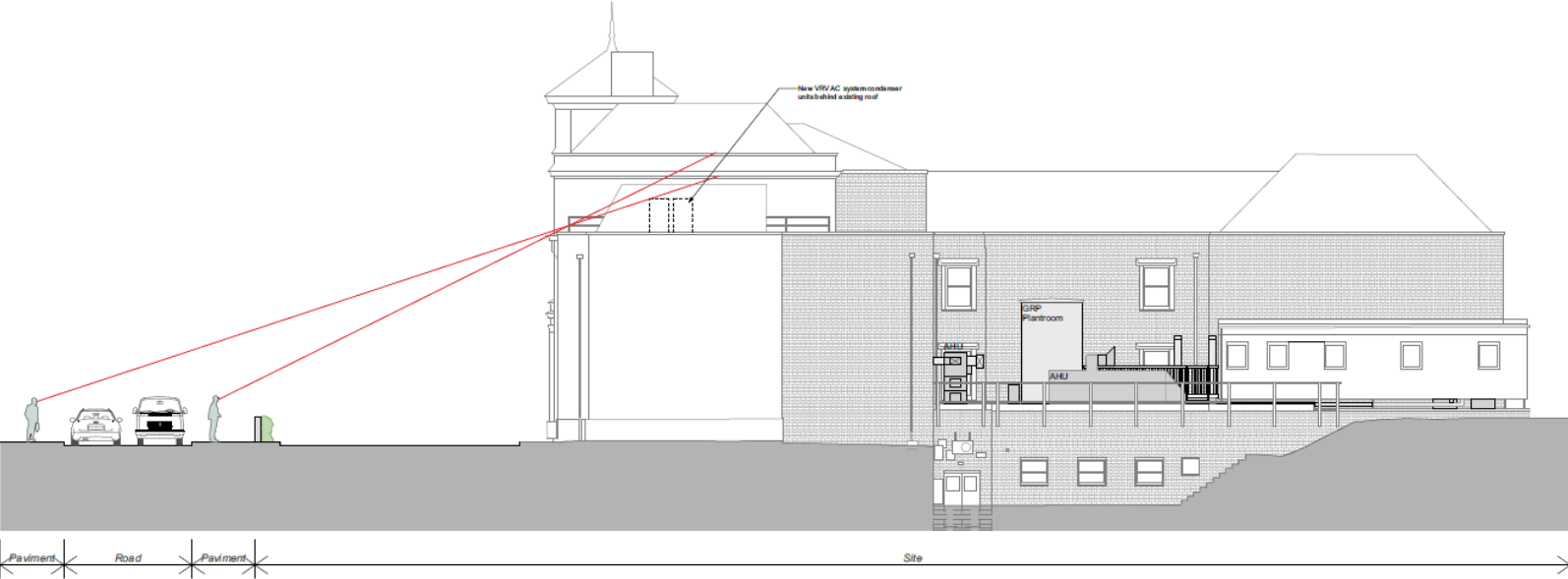
Proposed West Elevation



Proposed Screening



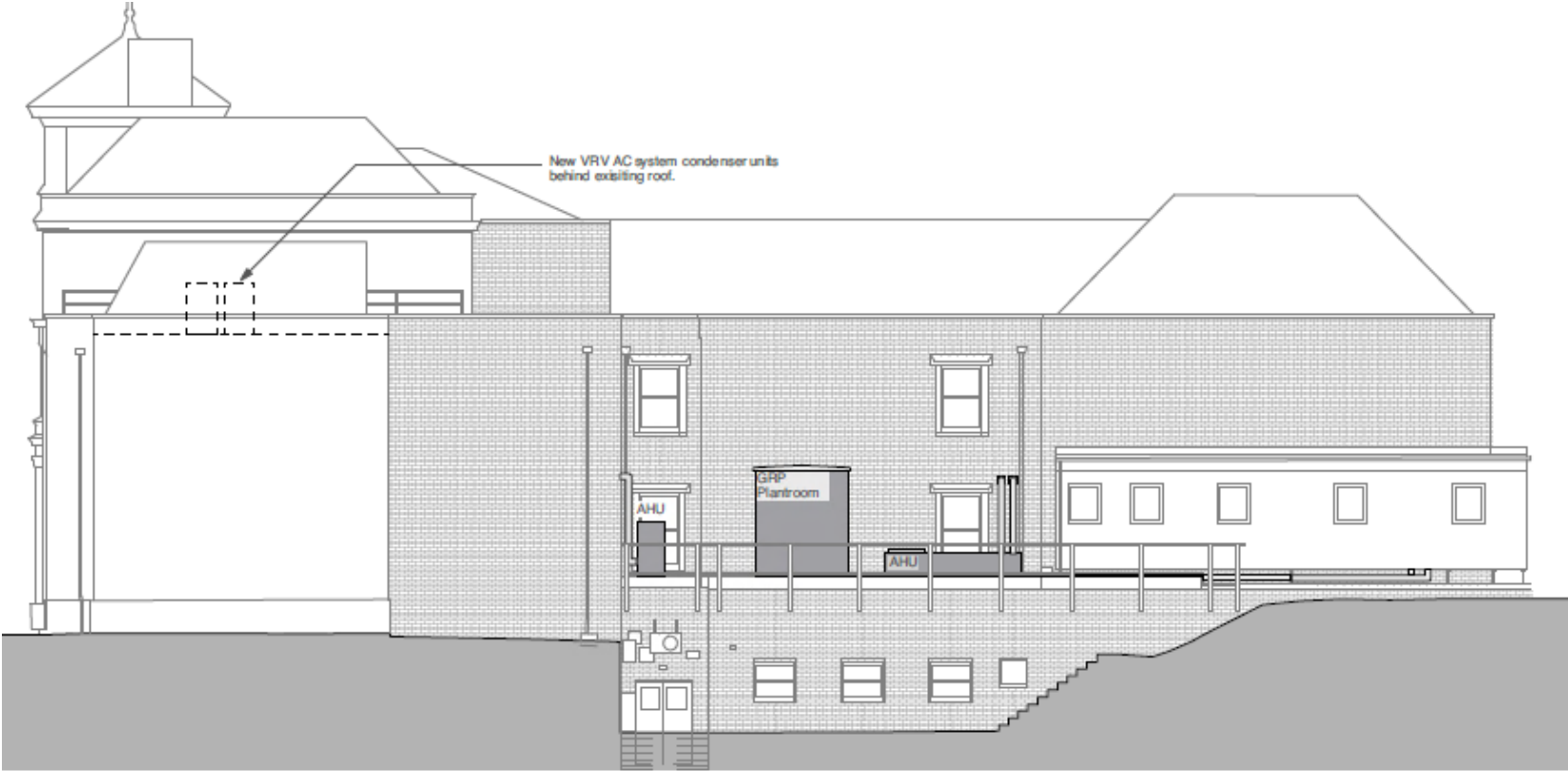
Proposed West Elevation (Extent Of Visibility)



Key planning consideration

- Urban Design and Impact on Heritage Assets
- Impact on living conditions of neighbours
- Other matters

Previously Approved Elevation



Previously Approved Site Plan

