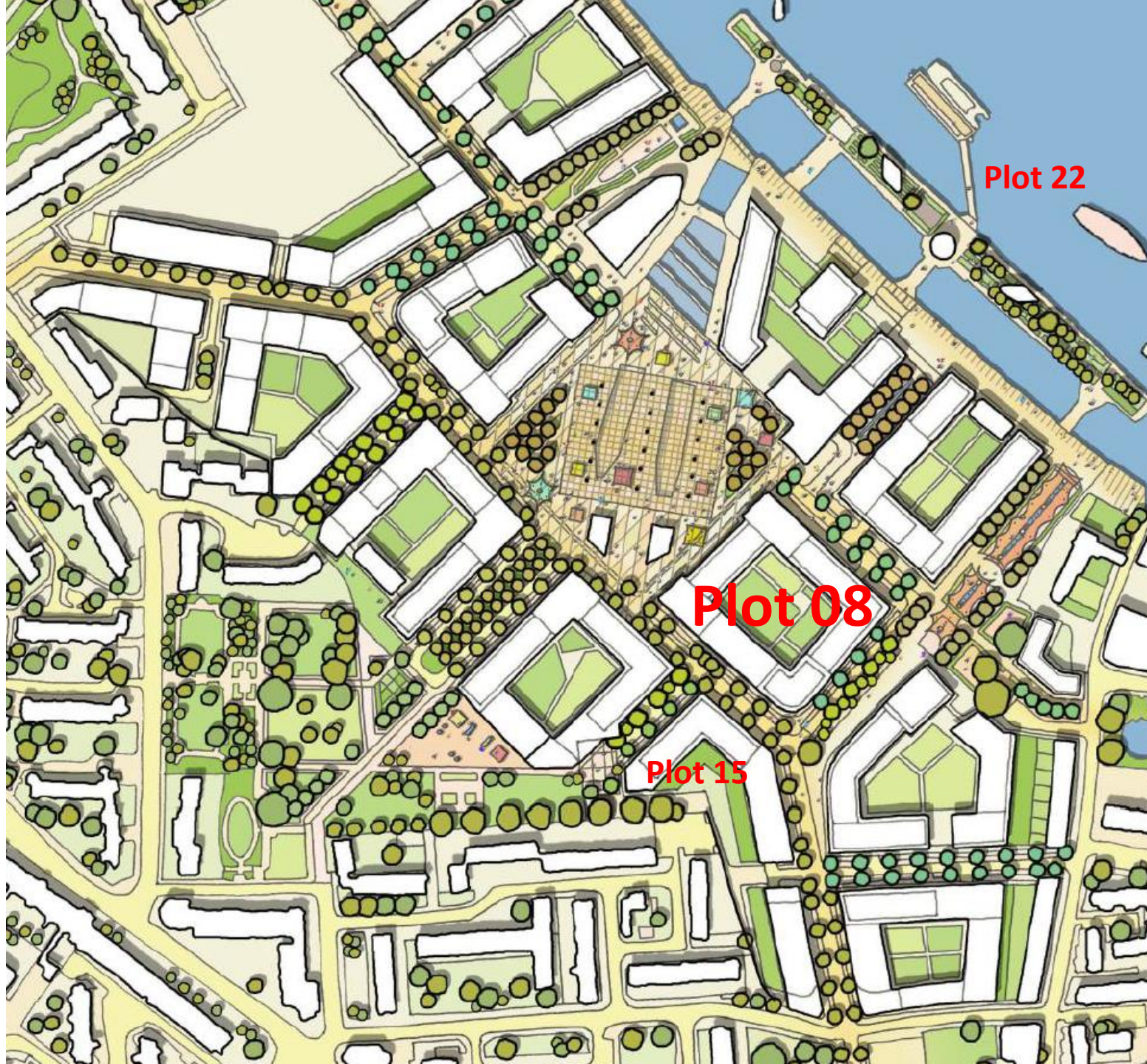


# Convoys Wharf

**Plot 08 ref. no. DC/18/107698**

This presentation forms no part of a planning application  
and is for information only.





Plot 22

Plot 08

Plot 15



# Layout of P08

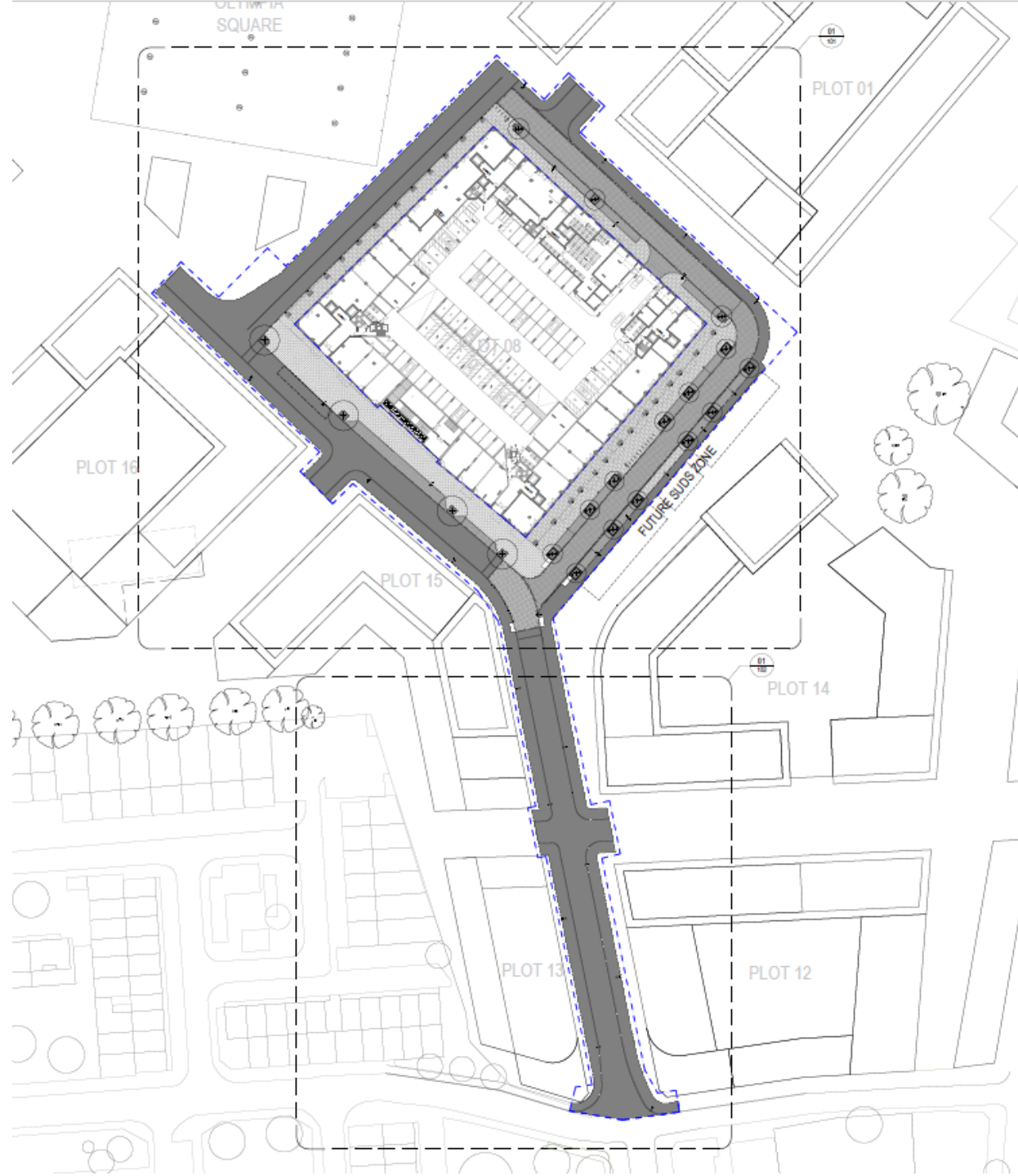




Image of P08 from “Eastgate”





Image of northern elevation





Image of P08 from north (behind PO1 and PO2)





# Elevation strategy

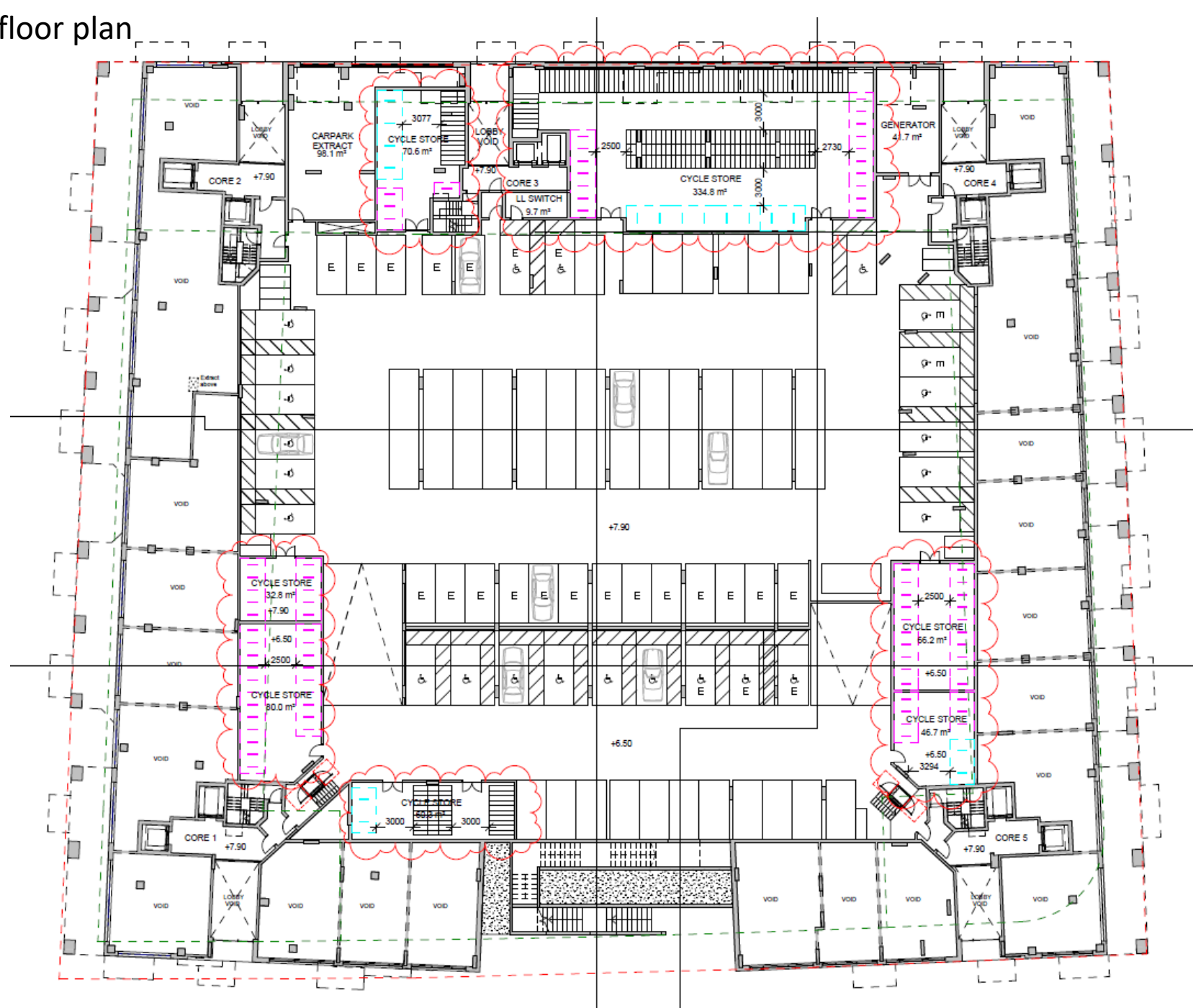


This architectural floor plan depicts a large commercial building with a central parking lot. The layout is organized into several functional zones:

- Central Core and Parking:** A large central parking lot is flanked by a series of vertical corridors and service areas. The central section includes a row of rooms labeled 'E' (likely elevators or stairs) and a large 'BULKY STORAGE' area at the bottom center.
- Retail and Commercial Spaces:** Numerous 'RETAIL A1' and 'RETAIL A3' spaces are distributed around the perimeter and within the building. Specific retail areas include 'RETAIL REFUSE STORE', 'RETAIL SWG', and 'CYCLE STORE' (two locations, one on the left and one on the right, both highlighted with red dashed circles).
- Service and Utility Areas:** The plan includes several utility and service rooms such as 'SUBSTATION 2', 'DH THERMAL RM', 'SPRINKLER TANK', 'CWS Tank', and 'CYCLE STORE'. There are also 'LOBBY' areas and 'CORE' spaces (CORE 1, CORE 2, CORE 3, CORE 4, CORE 5) for circulation.
- Dimensions and Orientation:** Many rooms are labeled with their area in square meters (e.g., 35.1 m², 32.1 m², 93.3 m²). The plan is oriented with North at the top, indicated by a north arrow in the upper right corner.

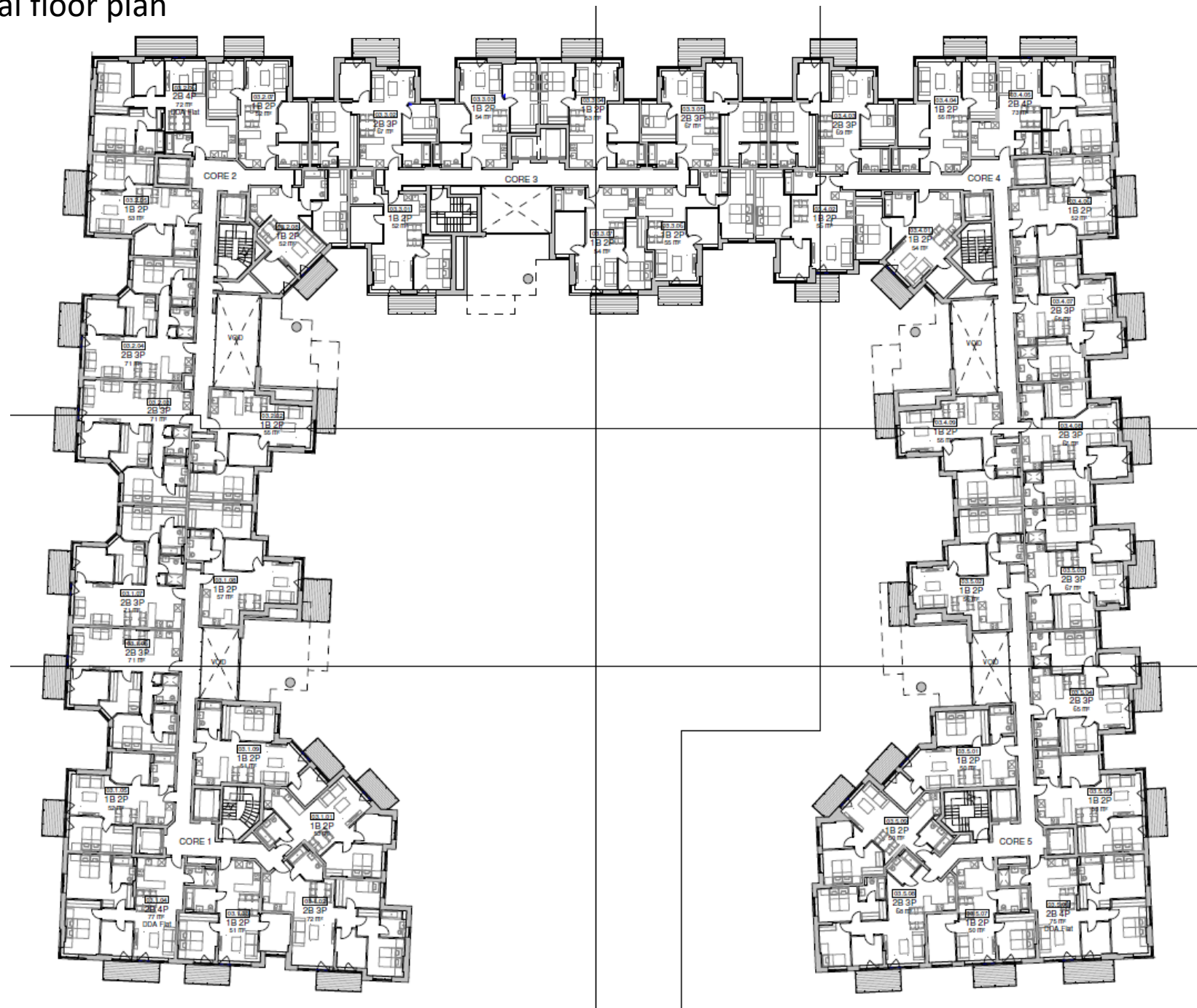


First floor plan



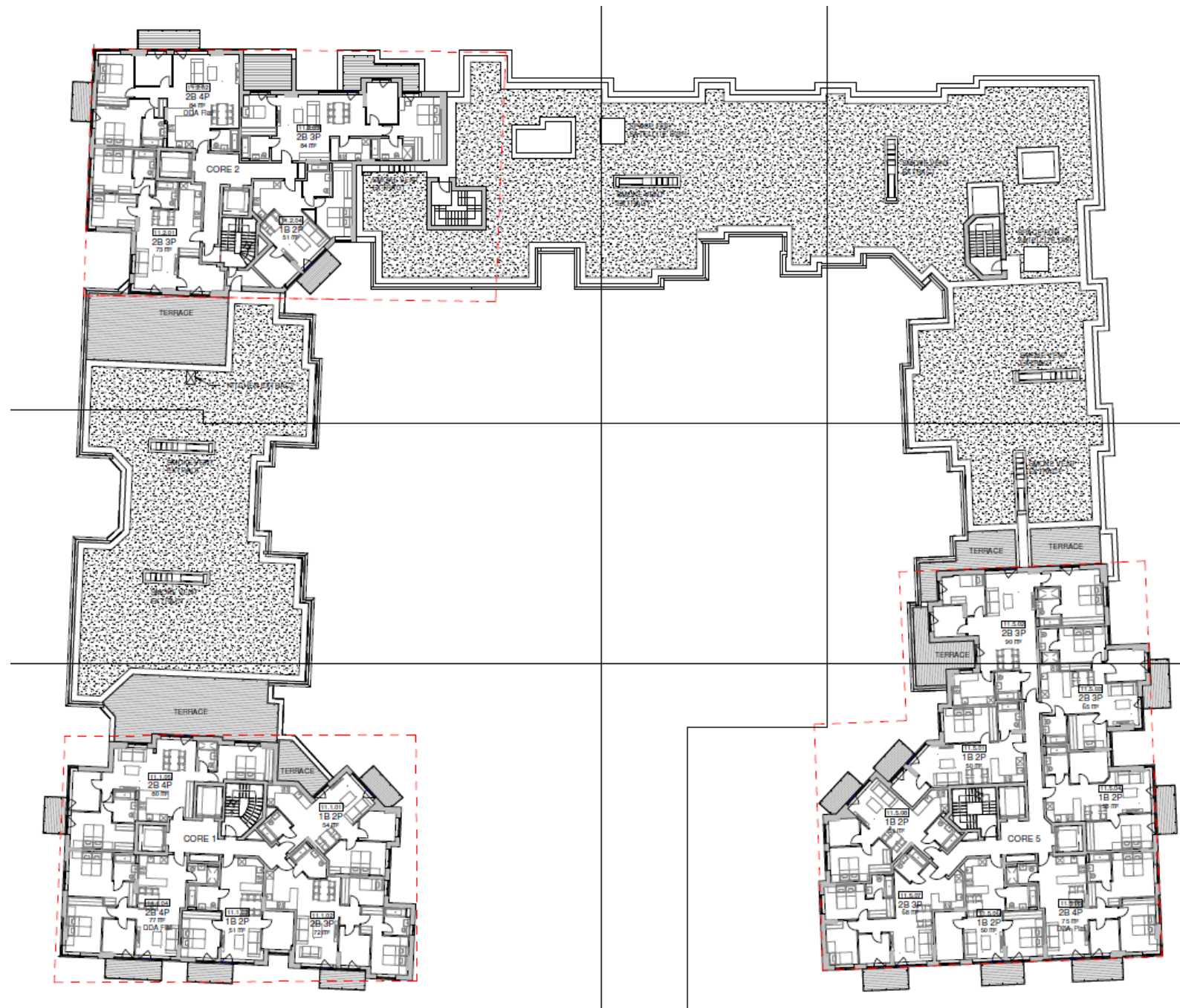


Typical floor plan



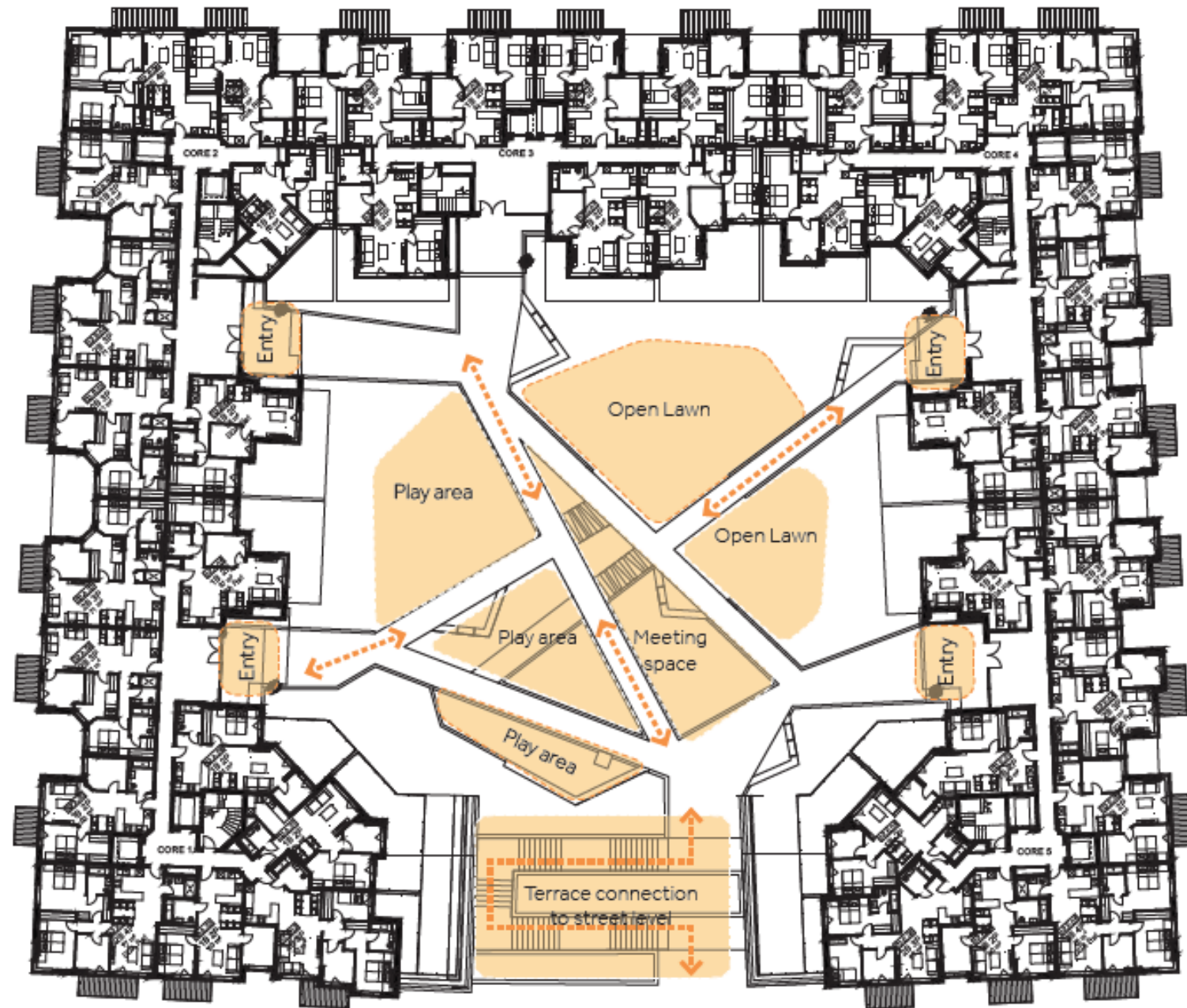


# 12<sup>th</sup>-13<sup>th</sup> floor plan





## Landscape programme



## Reuse of timber in landscaping and public realm

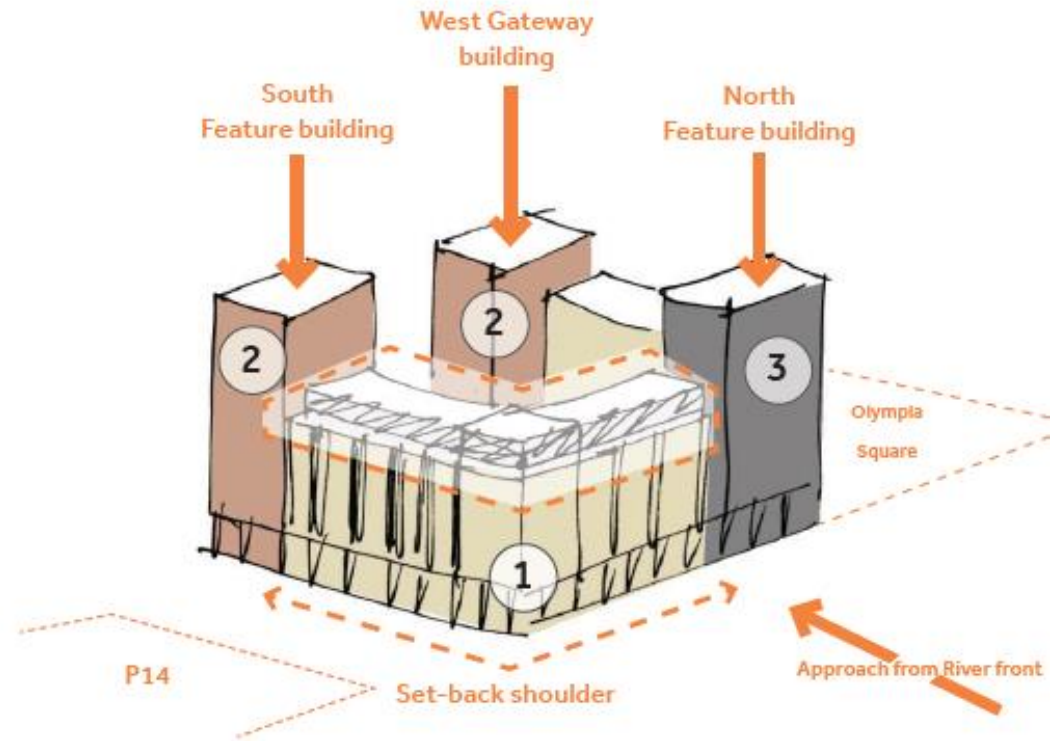
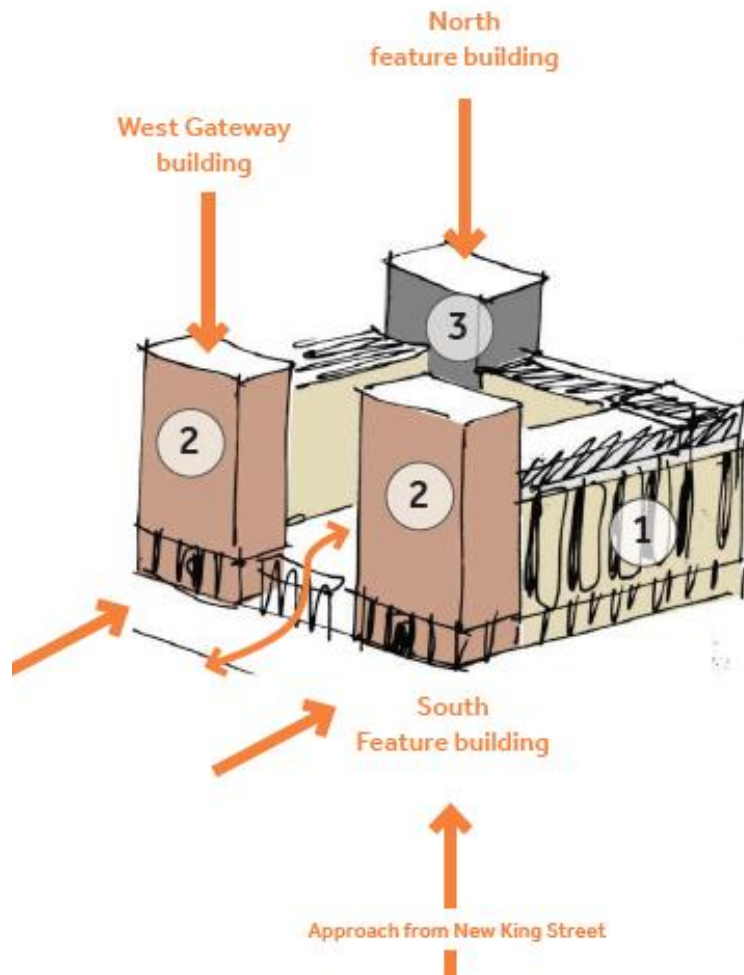


3D View showing location of Heritage Interpretation Features

Location and precedent for timber seats



# Massing and materiality



# Materiality



1. Grey Brick - (eg Pagus Grey/Black).



2. Buff Brick - (eg. Mirato Handmade)



3. Red Brick - (eg. Bamford Blend)



4. Precast Stone - (eg. Wet Cast Portland WP-01)



5. Double glazing with anthracite powder coated aluminium framing

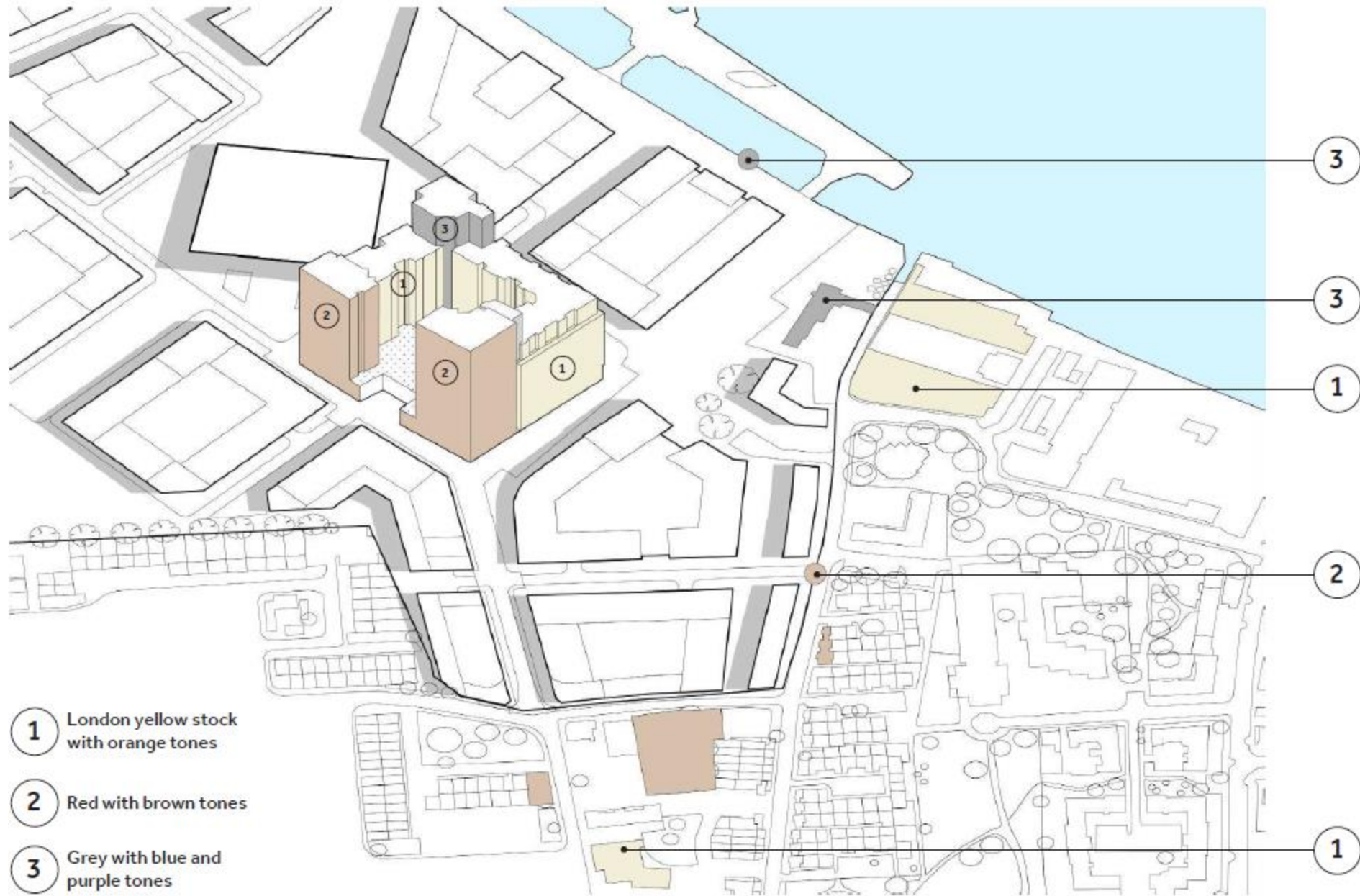


6. Metal panel - Champagne Metallic





## Massing and materiality



Relationship of P08 colonnade and Olympia Building





## Site wide heritage character areas



# Temporary and permanent public realm

PERMANENT WORKS



TEMPORARY WORKS

