



## **Brockley Local Assembly**

Saturday 15 September 2012

# Explanation of the voting process

**CLLr Vicky Foxcroft**



**Lewisham**

**There are three different categories. These are based on the amount that projects have applied for.**

**Category A** - total funding available is £2,000 for groups requesting funding from £1 to £500

**Category B** – total funding available is £3,000 for groups requesting funding from £501 to £1500

**Category C** - total funding available is £10,000 for groups requesting funding from £1501 to £5,000

**Before the voting process is outlined, we need to decide what to do with the unallocated funding from Category A and B where there is the potential to fund all projects.**

There are two options:

1. Roll-over this funding into Category C
2. Use the money to support areas of the ward which have received no bids / to meet priority areas that have not been addressed / for ward-wide activities



**Option 2 would mean looking at areas of the ward that would not benefit from the current proposals. Other Assemblies have successfully used this approach.**

For example:

1. Telegraph Hill ward used it to ask residents of the Honor Oak Estate – where no bids were received from – what they want and then implemented it.
2. Crofton Park use a commissioning approach for all of their funding to ensure the identified ward priorities are addressed.

# DECISION

**(show of hands)**

- 1. Roll-over this funding into Category C**
- 2. Use the money to support areas of the ward which have received no bids / to meet priority areas that have not been addressed / for ward-wide activities**



**Lewisham**

In Category A and B we potentially have enough to fund all of the projects that have applied.

The voting system will be a yes or no vote.

Example voting form:

<b>Proposal Number</b>	<b>Name of Proposal</b>	<b>Amount applied for</b>	<b>VOTE Yes</b>	<b>VOTE No</b>
1	PROJECT X	£50	X	
2	PROJECT Y	£300		X
3	PROJECT E	£100	X	

In Category C, there are more applications than funding available.

Voting will be conducted using a scoring system where you give each project a 1-5 score (1 is lowest, 5 is highest).

The projects with the highest score will get funded.

Example voting form:

<b>Proposal Number</b>	<b>Name of Proposal</b>	<b>Amount applied for</b>	<b>SCORE (1-5)</b>
1	PROJECT X	£5000	5
2	PROJECT N	£3000	2
3	PROJECT L	£2500	5
4	PROJECT Z	£2000	3

# **Assembly Fund project presentations and questions**

**Each project will have up to three minutes to present followed by three minutes of questions.**



**Lewisham**

# Project A1

## **Tyrwhitt Road Neighbourhood Beautification Programme**

### ***Tyrwhitt Road Neighbourhood Watch***



**Lewisham**

# Project A2

**Christmas theatre trip for  
local families who have  
children under 5 years old**

***Brockley Parents Forum***



**Lewisham**

## Category A vote

Please use the **PURPLE** ballot paper to vote. Then, hand it back to a member of staff.



Lewisham



# **Project B1**

**Hatcham Village Big Lunch  
2013**

**New Cross Learning**



**Lewisham**

# \*The Big Lunch in Hatcham Village.

- Where is it?
- What is it?
- Why is it?

# \*Where is it?

So here it is, right on the edge of Brockley Ward



# \*What is it?

1. The Church
2. The School
3. The Pub
4. The Library
5. Local Businesses

No mountains and  
you're unlikely to  
find any cows in our  
village



# Why is it?

- Hatcham Village **wants** to bring people together who live in the four neighbouring wards
- Hatcham Village **wants** to raise local people's sense of ownership in their area
- Hatcham Village **wants** to break down the barriers that create gang culture

# How can a Big Lunch help?

\* A day to share  
and enjoy for all  
ages, all cultures  
and all languages

# Project B2

**To purchase toys and play  
equipment for St John's  
Baby and Toddler Group**

***St John's Baby and Toddler  
Group***



**Lewisham**

# St John's Baby and Toddler Group

Hello!



We are St John's Baby and Toddler Group



# St John's Baby and Toddler Group

- ▶ St John's Baby and Toddler Group is a friendly and popular playgroup that is open to all in the local community, which runs every Wednesday and Thursday morning throughout term time. It has been running for twenty years!
- ▶ It is properly constituted and has an elected committee, and is run under the umbrella of St John's Church, but open to all regardless of faith.
- ▶ It is managed and staffed entirely by parents and carers of children attending the playgroup on a voluntary basis.
- ▶ It is financially independent - both of the church and local authority. This makes it unique in the area and entirely dependent on volunteer input, fund raising activities and weekly entrance fees.
- ▶ The Group reaches out to all parents and carers and their young children in the parish and in the wider local community.
- ▶ Parents and carers can meet, chat and find support through the experience of others and enjoy a tea or coffee

# St John's Baby and Toddler Group

## Our Objectives

- ▶ To encourage the emotional, physical, creative and intellectual development of the children and enable them to socialise on a regular basis and learn through play, music, dancing, singing, art and craft activities and general play
- ▶ To provide a fun, safe and stimulating environment for everyone involved, and give everyone an opportunity to access good quality toys and activities
- ▶ To enable parents and carers, some of whom may feel isolated at home with young children to meet, socialise and support each other
- ▶ To engage with the local community through its fund-raising activities – Nearly New Sales and Cake Sales

# St John's Baby and Toddler Group

The entrance fee of £2.00 per family includes . . . .

- ▶ Fair-trade fruit and drink for the children, and tea, coffee and biscuits for adults



*Check out those yummy  
Quality Street chocs  
for Parents!*

# St John's Baby and Toddler Group

- ▶ A varied range of arts and crafts activities



# St John's Baby and Toddler Group

- ▶ A sing-along session – accompanied by British Sign Language

*Shaking it all about  
doing the hokey  
okey!*



# St John's Baby and Toddler Group

## Some of our fund-raising activities



**St John's  
Baby and Toddler Group**

JOIN US FOR OUR   
**Nearly New Sale**

of childrens' clothes  
(0-5 years),  
toys, books and maternity wear  
also cakes and refreshments available  
for sale in our cafe

 The fun will take place on  
**Thursday  
12 July 2012**  
from 9.30am to 12 noon  
(sale ends at 11am)  
at St John's Church,  
Lewisham Way SE8 4EA

 Interested in selling?  
Please email for more details:  
[saintjohnsplaygroup@yahoo.co.uk](mailto:saintjohnsplaygroup@yahoo.co.uk)

So let's get those cupboards freshened up as well as  
help us raise funds for the playgroup!

---

Admission on the day will be £1 per adult  
(no charge for children).

**St John's**   
**Nearly New Sale**

**Your Playgroup  
needs cake!**

 Our second Nearly New Sale  
will take place next  
**Thursday 30 September 9.30 - 11am**

Alongside the sale we will  
be running a cafe selling  
coffee, teas and cake.

**We need volunteers to make cakes  
(or even flapjacks or buns!)  
for the cafe.** 

Just let Cynthia, Emma or Ingrid know  
what you'll be bringing on the day.

 **ALL PROFITS MADE FROM THE CAFE  
WILL GO TO SUPPORT THE RUNNING  
OF ST JOHN'S PLAYGROUP.**

**IT'S YOUR PLAYGROUP - COME AND PARTICIPATE!**



## and . . .

- ▶ We are fund-raising to buy, renew and upgrade the playgroup's toys and play equipment
- ▶ Much of this equipment has been in use at the Group sessions in excess of 10 years and due for replacement under our Fit-for-Use review
- ▶ Our aim when choosing equipment and activities for the playgroup is to give the children as many opportunities as possible to think and learn for themselves through play
- ▶ We have identified new items to purchase, which are robust and long-lasting, and we are bidding for £750 to match fund the £750 we have already raised through our regular fund-raising activities e.g. cake sales and Nearly New Sales.

# St John's Baby and Toddler Group

Thank you!





# **Project B3**

## **Garden Ambassadors**

**Course: two one day pilot training courses for young people (8-12yrs)**

**Tanners Hill TRA Garden Committee**



**Lewisham**

## Category B vote

Please use the **BLUE** ballot paper to vote. Then, hand it back to a member of staff.



Lewisham

# Project C1

**Threadz: Girls-only fashion project raising the aspirations of young women in Brockley**

***Peabody***



**Lewisham**



# PEABODY

## Threads Project

Presented by Sharon Barbour

Saturday 15<sup>th</sup> September 2012

# Peabody

- Peabody has worked with young people on our estates since 1997 and we have a wide-ranging knowledge and experience of tackling issues that negatively impact on their lives, including crime, unemployment and low aspirations.
- Leander youth club has been delivering youth provision on the estate for approximately 15 years. During that time we have worked in partnership with Lewisham youth services who have provided connexions and drug education staff enabling young people to build their employability and stay healthy.
- The youth club has been there to provide social engagement to 100s of young people as well as offering homework, apprenticeship and employment support.

# Fashion: A Self-Development Tool

- Fashion is a good tool for attracting young women into positive activities. It enables them to learn lifelong skills and consider fashion as a career as well as expand their creativity and meet new friends.
- For example, we have been delivering a BBC Children in Need funded girl's fashion group in Hackney since 2009.
- This girls group has been hugely successful, working with 30 young women who now have enhanced aspirations for their futures.
- Based on this success, we want to replicate the programme on our Leander Estate in Brockley.

# What is the Project About?

Threads fashion project is about building young women's self-esteem and aspirations and tackling gang culture using fashion as an engagement and self-development tool.



# What will they learn?

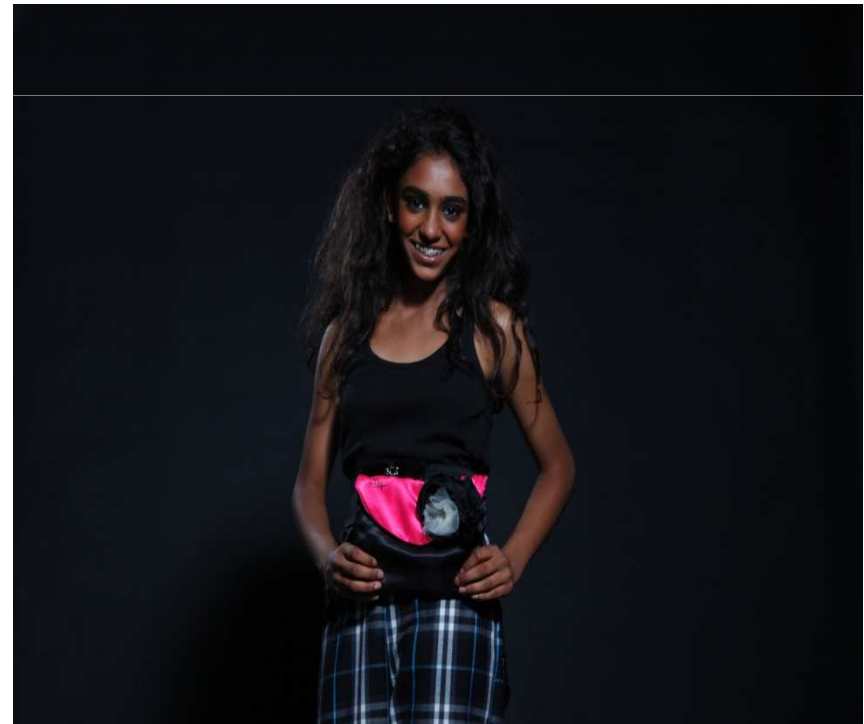
Girls will learn how to make a garment or bag, make a mood board, source and buy fabrics and use research from magazines, internet, art galleries and museums for inspiration. They will also be engaged in debating topics such as body image, ethical fashion, female role models and improved their self confidence and presentation skills in the group work.





From our experience of working with young women, we know that they often make a bag in a 2-3 hour session, or learn how to knit. Some achieve skills very quickly and are able to make a garment in 3 or 4 sessions.

They gain a range of employability and life skills – for example, literacy through advertising of their own LookBooks and numeracy skills through cutting accurate technical patterns.



# Operational Delivery

- Project manager- Sharon Barbour (Youth & Extended Services Manager)
- Project delivery partner- SE1 United
- Project monitoring and evaluation- Peabody
- Learning from the project will be disseminated through Peabody's website, enabling partner organisations and community groups to replicate our results.

# Key Outcomes

- 20 young women will be engaged in informal learning in a fashion studio, leading to increased basic skills, including literacy, numeracy and IT
- 20 young women will have developed fashion industry related skills , including developing mood boards, cutting patterns, website design, and managing events - significantly improving their employability and life chances
- 20 young women will receive the one-to-one support of a designated mentor from local fashion schools, leading to enhanced self-esteem, motivation and increased understanding of risky behaviours abusive relationships and the dynamics of gang/community violence and how to deal with these
- 20 young women will have completed a Personal Development programme and worked on team building activities leading to strengthened and positive peer support networks that reduces the pull of gangs

# Value for Money

- Economic: The project costs just £25 per week for each young woman to participate, where 20 young people participate in 10 weekly sessions.
- Social: provides a platform for young people to develop positive friendships and improved self-confidence that will be invaluable to their future lives. In addition this will also result in building stronger social capital through community investment and engagement.



# Any Questions



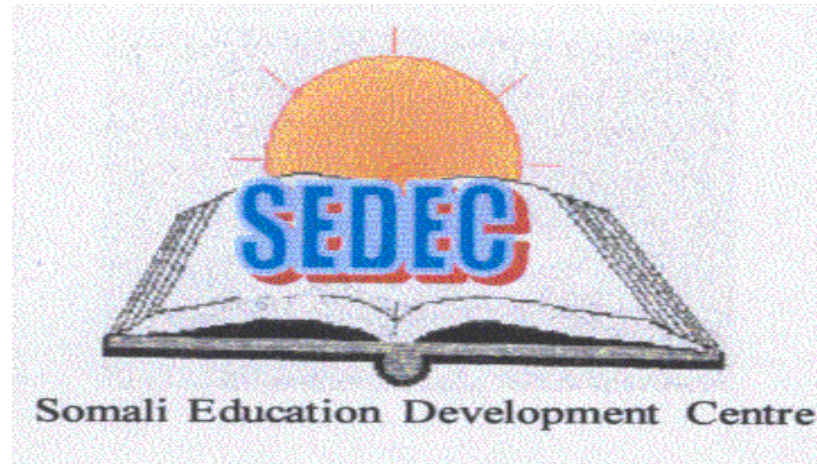
# Project C2

**Short sharp educational  
experience for three age  
groups of young people**

***Somali Education  
Development Centre***



**Lewisham**



# **Somali Education Development Centre (SEDEC)**

**43 Albyn Road, London, SE8 4EG**

**Tel: 02081271359**

**Email: [Sedec@hotmail.co.uk](mailto:Sedec@hotmail.co.uk)**

# About SEDEC

SEDEC was set up in 1999 to address the public benefit particularly on the Somali Community.

Our organisation has visible history of working successfully with families and young people by focusing on improving lives through education, social inclusion, sports and well being.



Somali Education Development Centre is created by a group of provisional and still led by the community elders, women and young people to help survive our identity and support our families by providing services and identifying their problems to the local authorities.

We have been working in the areas of Lewisham for the past 13 years and now we are based in Brockley ward.

We work with Somali youth project, Lewisham youth service, connections and many other organizations

## **About our project**

The aim of this project is to engage young people from age 9-16 yrs.

It is an after school club activities that will help them to develop their self confidence, self esteem, a sense of identity.

This will be indoor activities and we only targeting young people living in Brockley area.

We will run 2 workshop sessions every month focusing their personal development, health awareness and increasing their skills that will enable them to achieve their full potential.

The workshop sessions will start in October 2012-March 2013. . We will also Organise one day trip so YP can learn, relax and engage.

*The project will be supervised by our management committee but we will engage experienced youth workers and other professionals (in health, advice, and personal development) in order to deliver our project efficiently and effectively.*

## ***How this project will benefit young people in Brockley?***

1.YP will gain a sense of identity, confidence, and learn new skills, the program will enable them to be a responsible and will be able to adopt healthy/active lifestyle.

2.The project will provide a place where YP to socialize and hang around instead to be idles or on streets and involve ASB.

















# Project C3

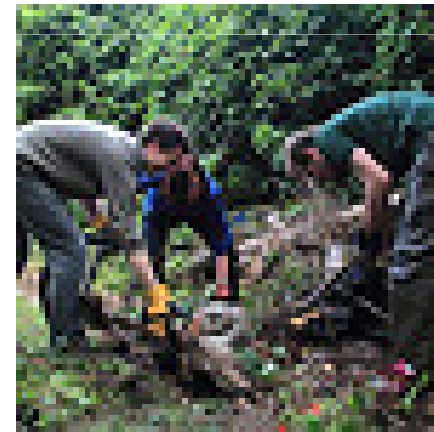
**Continued improvements to  
Wickham/Manor Mews to  
create a useable and  
maintained space for the  
local community**

***Wickham Mews residents***

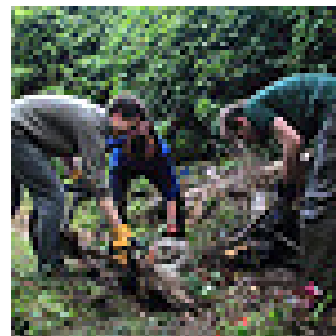
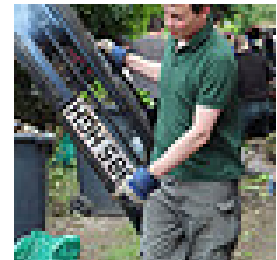
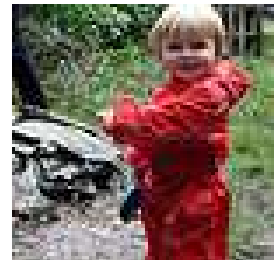
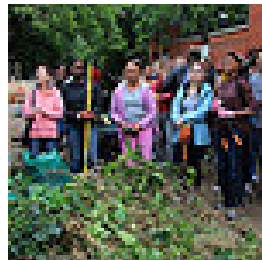


**Lewisham**

# Wickham & Manor Mews Clean-up Round 2



# Mews clean up June 2012





# The Plan

- Maintain the cleanliness of the Mews with preserved paths.
- Maintain seasonal and wild **plants**.
- Create a **herb/vegetable patch** allowing a 'help yourself' area.
- Create welcoming entrance areas, with fixed gates to prevent further **fly-tipping**.
- **Solar powered lighting** for Brockley residents to access the Mews as a regular walkway in any season or time of day.
- Continue the policing and with the help of Lewisham Council the removal of parked **abandoned cars**.

# Desired outcome

- Our plans will allow the Mews to have a preserved feel and allow all Brockley residents to **enjoy** and **appreciate** the Mews.
- Due to the size of the Mews, the previous fund was not sufficient. With the new request this can now be achieved in 2012/13.

# Update & plan for funding

- Abandoned and un-taxed cars continue to be parked in the Mews and it is envisaged that with a huge effort the help of the Lewisham Environmental team that these are removed and action taken for those responsible. The group are hopeful that the maintenance of the Mews with the additional plants and ground improvements will deter the dumping of cars and therefore reduce the cost for the Council.
- As we have had theft of both plants and a huge iron gate we need to make improvements to maintain the area.
- These improvements, especially the preservation and solar power lights, will also discourage Fly-tipping which is a major issue in all parts of Lewisham and more so in the various Mews.



# Expenditure

Ground flattening & gravel	£1000
Repair Gate fixture & improved access at Ashby/ Manor Avenue	£500
Flowers & plants & soil	£600
Dog poop bin	£100
Solar Powered lights x 4	£300
Additional signage	£100
Mews promotion or open day	£200
Contingency to remove fly-tipping/Abandoned cars	£200
<b>Total Project Expenditure</b>	<b>£3000</b>

# Wickham/ Manor Mews Maintenance

**Please vote & help maintain  
this unique and  
natural area in Brockley!**

# Project C4

**Breakspears Mews  
Community Garden**

***Breakspears Mews  
Community Garden***



**Lewisham**

# A neglected, misused space

January 2003



May 2005



July 2011



June 2012





# Unloved and abused

January 2003



May 2005



September 2005



July 2011



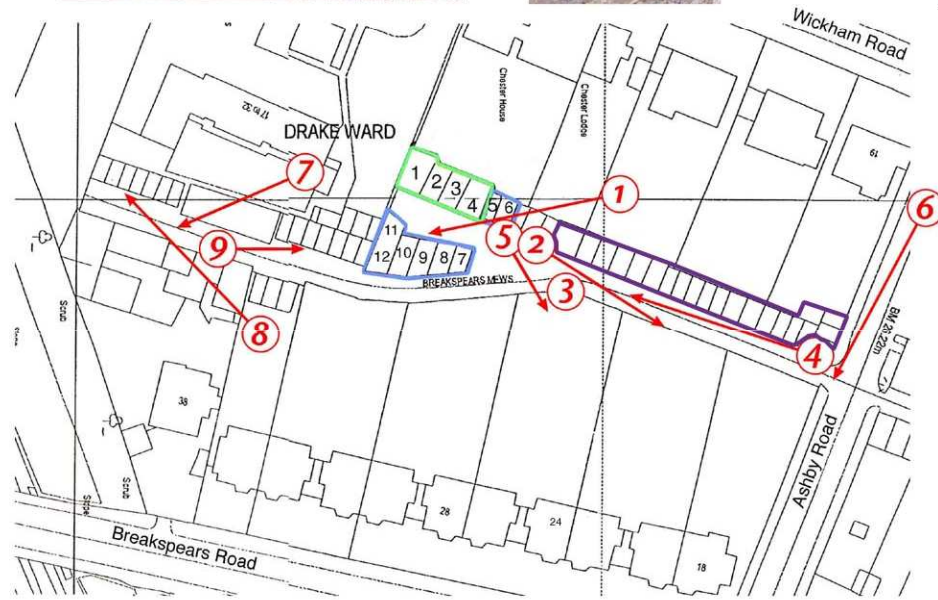
February 2012



June 2012





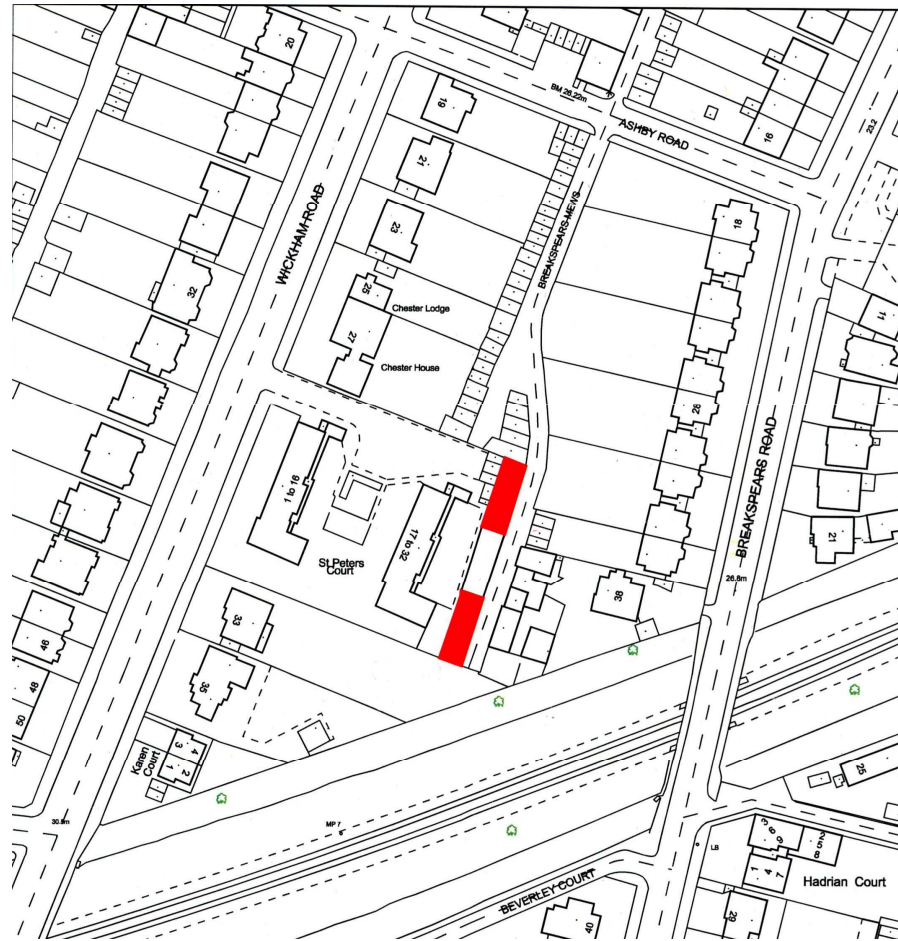


Breakspears Mews, London, SE4  
21st July 2002

Garages 1 - 4 █ Sumpton licensed to work  
 Garages 5 - 12 █ Sumpton garaging only  
█ All Kneller - I think



# Breakspears Mews Community Garden





# Progress at last





Your vote will help us achieve our goal





# Open days have lifted our spirits

March 2012



July 2012





Your vote will help us achieve our goal



# Project C5

## Tree Planting programme in Brockley Ward

*Brockley Society*



Lewisham

# Project C6

**A mural on the eastern wall  
of the railway arch over  
Brockley Road, near  
Brockley Cross**

***Brockley Cross Action  
Group***



**Lewisham**

# Project C7

**Youth football for activity  
and health**

***Junior Reds FC Titans***



**Lewisham**

## Category C vote

Please use the **GREEN** ballot paper to vote. Then, hand it back to a member of staff.



Lewisham

# QUIZ

PRESENTING THE  
BROCKLEY LOCAL  
ASSEMBLY

# ? ? ? NIGHT

---

---

**WHEN?** Wednesday 24 October

**TIME?** 7.30pm - 10pm

**WHERE?** Brockley Social Club  
(Brockley Road, SE4 2SU)

£5 per  
team

Max of  
6 per  
team

Cash  
prize



Lewisham



**Please fill in your feedback forms. Thank you.**



**Lewisham**