

# Children and Young People Select Committee Agenda

Thursday, 2 October 2014

**6.30 pm,**

Committee Room 2

Civic Suite

Lewisham Town Hall

London SE6 4RU

For more information contact: Andrew Hagger (Tel: 020 8314 9446 Email: [andrew.hagger@lewisham.gov.uk](mailto:andrew.hagger@lewisham.gov.uk))

This meeting is an open meeting and all items on the agenda may be audio recorded and/or filmed.

## Part 1

Item	Pages
1. Minutes of the meeting held on 1 July 2014	1 - 4
2. Declarations of interest	5 - 8
3. Lewisham Schools results	
- To follow	
4. Lewisham Future Programme	
- To follow	
5. Select Committee work programme	9 - 36
6. Referrals to Mayor and Cabinet	

# Children and Young People Select Committee Members

Members of the committee, listed below, are summoned to attend the meeting to be held on Thursday, 2 October 2014.

Barry Quirk, Chief Executive  
Tuesday, 23 September 2014

Councillor John Paschoud (Chair)	
Councillor Brenda Dacres (Vice-Chair)	
Councillor Chris Barnham	
Councillor David Britton	
Councillor Liz Johnston-Franklin	
Councillor Hilary Moore	
Councillor Jacq Paschoud	
Councillor Joan Reid	
Councillor Luke Sorba	
Councillor Alan Till	
Sharon Archibald (Parent Governor Representative)	
Lisa Palin (Parent Governor Representative)	
Mark Saunders (Parent Governor Representative)	
Gail Exon (Church Representative)	Church of England Southwark Diocesan Board of Education
Monsignor N Rotheron (Church Representative)	Roman Catholic Archdiocese of Southwark Commission for Schools and Colleges
Councillor Alan Hall (ex-Officio)	
Councillor Gareth Siddorn (ex-Officio)	

## MINUTES OF THE CHILDREN AND YOUNG PEOPLE SELECT COMMITTEE

Tuesday, 1 July 2014 at 7.30 pm

PRESENT: Councillors John Paschoud (Chair), Brenda Dacres (Vice-Chair), Chris Barnham, David Britton, Liz Johnston-Franklin, Hilary Moore, Jacq Paschoud, Joan Reid, Luke Sorba, Alan Till, Sharon Archibald (Parent Governor Representative), Lisa Palin (Parent Governor Representative) and Mark Saunders (Parent Governor Representative), Gail Exon (Church Governor Representative) and Monsignor Nick Rothern (Church Governor Representative)

ALSO PRESENT: Alan Docksey (Head of Resources & Performance, CYP), Andrew Hagger (Scrutiny Manager), Salena Mulhere (Overview and Scrutiny Manager), Ian Smith (Director Children's Social Care) (Directorate for Children & Young People, LBL), Frankie Sulke (Executive Director for Children and Young People) and Warwick Tomsett (Head of Targeted Services and Joint Commissioning)

### 1. Confirmation of Chair and Vice-Chair

#### Resolved:

The Committee confirmed the appointment of Cllr John Paschoud as Chair and Councillor Brenda Dacres as Vice-Chair of the Committee.

### 2. Minutes of the meeting held on 19 March 2014

#### Resolved:

The Committee approved the minutes of the meeting held on 19 March 2014

### 3. Declarations of interest

3.1 There were none.

### 4. Select Committee work programme

4.1 Andrew Hagger, Scrutiny Manager, introduced the work programme report, highlighting the terms of reference of the Committee, the different types of scrutiny available, suggested topics for the work programme and the draft work programme.

4.2 Councillor Paul Maslin, Cabinet Member for Children and Young People, addressed the Committee, highlighting the following key points:

- Three of the main priorities for Children and Young People outlined in the Lewisham Labour Party manifesto for 2014 were:
  - Improving secondary schools performance by 10%
  - Making sure that schools ensure our disadvantaged pupils get the most out of their education
  - Increasing primary school places
- Lewisham has met the challenges provided by the need for places so far; however it is now more difficult as some of the easier solutions have been pursued. There are limited sites for expanding schools, especially at sites

where there is high demand. Additionally there is a funding gap of around £20m.

- A key pressure is the current overspend in the budget, with increasing budget pressure from people with no recourse to public funds presenting themselves in the borough.
- The Council's role as corporate parent continues to be of high importance.

4.3 In response to questions from the Committee, Cllr Maslin and Frankie Sulke, Executive Director for Children and Young People, provided the following information:

- Further details on how the 10% increase in achievement will be delivered and measured will be developed. The approach will be to improve performance across the board, and improving results for those on the pupil premium will form an important part of improving results.
- The Mayor is committed to apprenticeships and recognises that there is a need for high quality vocational routes and qualifications.
- The focus of the pupil premium is on those with the biggest disadvantage. OfSTED holds schools to account for how pupil premium money is spent, and this is a key part of the Local Authority's challenge to schools.
- Schools are autonomous and it is not the Council's role to second guess how schools spend their money. However the Council does hold schools to account for their performance, including achievement gaps with pupil premium children. The Council is able to influence schools through strong leadership.
- Raising the Participation Age is a very important issue. From last September, all 17 year olds had to be in education or training and Lewisham has done well. The challenge now is for all 18 year olds to be in education or training by September 2015, which is a much harder challenge.
- Support is given to parents where it is needed, such as through early intervention and family support.
- Lewisham's primary school results were the 4<sup>th</sup> best in the country last year. Part of Lewisham's success has been through changing the levels of aspirations that people, whether parents or teachers, have for their children.

4.4 Frankie Sulke then addressed the Committee, providing some background to the Children and Young People's Directorate:

- The directorate deals with matters concerning those aged 0-19 in the borough and its aim is to radically improve the life chances of children in the borough.
- The quality of services provided is generally high and there is good integration across services, as well as good partnerships with outside bodies.
- Services can be categorised as universal, targeted or specialist. Targeted services include early interventions, with specialist services providing for those most in need such as Looked After Children and those with severe disabilities. The aim is to stop children rising up the triangle from universal to specialist. Targeted services are built into universal services to enable early intervention.
- Current priorities for the directorate include:
  - Improving standards, including in primary schools at the higher achievement levels. The gaps between those on the pupil premium achieving higher level results (level 5) and those not on the pupil premium achieving higher level results (level 5) are too large and the aim is to close these.

- Rapidly improving standards and closing gaps in achievement at secondary school level.
- Ensuring that those achieving at the highest level go on to achieve very highly in secondary school.
- Dealing with the bulge in numbers coming through primary to secondary schools in 2017.
- Safeguarding, which is a key responsibility.
- Developing vocational pathways.
- Families with no recourse to public funds, which represents a huge budget pressure.

4.5 In response to questions from the Committee, Frankie Sulke, Ian Smith, Director of Children's Social Care, Alan Docksey, Head of Resources and Performance and Warwick Tomsett, Head of Targeted Services and Joint Commissioning, provided the following information:

- The underperformance of white, working class boys in schools is a national trend which also occurs in Lewisham. Previously Black Caribbean boys eligible for free school meals were the most underperforming group. Schools use a range of strategies to improve the performance of underachieving groups. The forthcoming Pupil Ambassador celebration began its life as one approach to tackling the Black Caribbean achievement gap.
- Special schools are for those with the most complex needs, with resource provision in mainstream schools for those with less complex needs but who still need more support than in mainstream. Lewisham has come a long way in improving capacity in schools for dealing with children with SEN and there is an on-going approach for supporting mainstream schooling for children. There is an acute need for more Autism Spectrum Disorder related resource support in secondary schools. As the population continues to increase, there will be a need for more special school places as well as for secondary school places. Schools places planning will take a comprehensive approach across all places, including Special Schools and places for 2 year olds.
- It is hard to pick one intervention in primary schools that has made the difference as there have been a number of interventions running at the same time. The use of performance data as well as leading and supporting schools to have higher aspirations and expectations about what their children can achieve has had a strong impact, alongside the outstanding leadership provided by Executive Headteachers.
- Lewisham is looking at how to close the gap between those achieving the higher levels in primary schools who are not on the pupil premium and those on the pupil premium by looking at good practice and how to share it. The London Mayor's 'Gold Club' of schools is a group of schools across London that all buck the trend, with all their pupils achieving highly, including their pupil premium children. There are just over 100 Gold Club schools in London and 9 in Lewisham. The Mayor of London has also created the London Schools Excellence Fund which is funding a range of programmes designed to develop and spread effective practice.
- The highest achieving schools have the most enriched curriculums and are vibrant, creative places that offer opportunities for all children. Schools also ensure that children are not left out of opportunities due to the inability to meet the costs.

- Lewisham Council has a lot of engagement with schools, including half termly meetings by the Executive Director with primary headteachers, with secondary headteachers as well as termly meetings with all headteachers.

4.6 The Committee then discussed work programme items, agreeing to add:

- A rapid review looking at young people's mental health
- A rapid review looking at how best practice is shared between schools based around the Gold Club schools, including site visits to schools.
- A standard item about Raising the Participation Age
- A standard item examining schools capacity places planning
- A standard item examining secondary schools improvement and how this will be achieved
- A performance monitoring update on corporate parenting and Looked After Children at the same meeting as the safeguarding update

**Resolved:**

The Committee agreed the addition of the work programme items as listed above into the 2014/2015 work programme for the Committee, subject to the suitability of dates for these items.

**5. Referrals to Mayor and Cabinet**

5.1 There were none.

The meeting ended at 9.50 pm

Chair:

-----

Date:

-----

# Agenda Item 2

<b>Committee</b>	Children and Young People Select Committee	<b>Item No.</b>	2
<b>Title</b>	Declarations of Interest		
<b>Wards</b>			
<b>Contributors</b>	Chief Executive		
<b>Class</b>	Part 1	<b>Date</b>	2 October 2014

## Declaration of interests

Members are asked to declare any personal interest they have in any item on the agenda.

### 1 Personal interests

There are three types of personal interest referred to in the Council's Member Code of Conduct :-

- (1) Disclosable pecuniary interests
- (2) Other registerable interests
- (3) Non-registerable interests

### 2 Disclosable pecuniary interests are defined by regulation as:-

- (a) Employment, trade, profession or vocation of a relevant person\* for profit or gain
- (b) Sponsorship –payment or provision of any other financial benefit (other than by the Council) within the 12 months prior to giving notice for inclusion in the register in respect of expenses incurred by you in carrying out duties as a member or towards your election expenses (including payment or financial benefit from a Trade Union).
- (c) Undischarged contracts between a relevant person\* (or a firm in which they are a partner or a body corporate in which they are a director, or in the securities of which they have a beneficial interest) and the Council for goods, services or works.
- (d) Beneficial interests in land in the borough.
- (e) Licence to occupy land in the borough for one month or more.
- (f) Corporate tenancies – any tenancy, where to the member's knowledge, the Council is landlord and the tenant is a firm in which the relevant person\* is a partner, a body corporate in which they are a director, or in the securities of which they have a beneficial interest.
- (g) Beneficial interest in securities of a body where:-
  - (a) that body to the member's knowledge has a place of business or land in the borough; and

- (b) either
- (i) the total nominal value of the securities exceeds £25,000 or 1/100 of the total issued share capital of that body; or
  - (ii) if the share capital of that body is of more than one class, the total nominal value of the shares of any one class in which the relevant person\* has a beneficial interest exceeds 1/100 of the total issued share capital of that class.

\*A relevant person is the member, their spouse or civil partner, or a person with whom they live as spouse or civil partner.

### **(3) Other registerable interests**

The Lewisham Member Code of Conduct requires members also to register the following interests:-

- (a) Membership or position of control or management in a body to which you were appointed or nominated by the Council
- (b) Any body exercising functions of a public nature or directed to charitable purposes, or whose principal purposes include the influence of public opinion or policy, including any political party
- (c) Any person from whom you have received a gift or hospitality with an estimated value of at least £25

### **(4) Non registerable interests**

Occasions may arise when a matter under consideration would or would be likely to affect the wellbeing of a member, their family, friend or close associate more than it would affect the wellbeing of those in the local area generally, but which is not required to be registered in the Register of Members' Interests (for example a matter concerning the closure of a school at which a Member's child attends).

### **(5) Declaration and Impact of interest on member's participation**

- (a) Where a member has any registerable interest in a matter and they are present at a meeting at which that matter is to be discussed, they must declare the nature of the interest at the earliest opportunity and in any event before the matter is considered. The declaration will be recorded in the minutes of the meeting. If the matter is a disclosable pecuniary interest the member must take no part in consideration of the matter and withdraw from the room before it is considered. They must not seek improperly to influence the decision in any way. **Failure to declare such an interest which has not already been entered in the Register of Members' Interests, or participation where such an interest exists, is liable to prosecution and on conviction carries a fine of up to £5000**
- (b) Where a member has a registerable interest which falls short of a disclosable pecuniary interest they must still declare the nature of the interest to the



meeting at the earliest opportunity and in any event before the matter is considered, but they may stay in the room, participate in consideration of the matter and vote on it unless paragraph (c) below applies.

- (c) Where a member has a registerable interest which falls short of a disclosable pecuniary interest, the member must consider whether a reasonable member of the public in possession of the facts would think that their interest is so significant that it would be likely to impair the member's judgement of the public interest. If so, the member must withdraw and take no part in consideration of the matter nor seek to influence the outcome improperly.
- (d) If a non-registerable interest arises which affects the wellbeing of a member, their, family, friend or close associate more than it would affect those in the local area generally, then the provisions relating to the declarations of interest and withdrawal apply as if it were a registerable interest.
- (e) Decisions relating to declarations of interests are for the member's personal judgement, though in cases of doubt they may wish to seek the advice of the Monitoring Officer.

## **(6) Sensitive information**

There are special provisions relating to sensitive interests. These are interests the disclosure of which would be likely to expose the member to risk of violence or intimidation where the Monitoring Officer has agreed that such interest need not be registered. Members with such an interest are referred to the Code and advised to seek advice from the Monitoring Officer in advance.

## **(7) Exempt categories**

There are exemptions to these provisions allowing members to participate in decisions notwithstanding interests that would otherwise prevent them doing so. These include:-

- (a) Housing – holding a tenancy or lease with the Council unless the matter relates to your particular tenancy or lease; (subject to arrears exception)
- (b) School meals, school transport and travelling expenses; if you are a parent or guardian of a child in full time education, or a school governor unless the matter relates particularly to the school your child attends or of which you are a governor;
- (c) Statutory sick pay; if you are in receipt
- (d) Allowances, payment or indemnity for members
- (e) Ceremonial honours for members
- (f) Setting Council Tax or precept (subject to arrears exception)

This page is intentionally left blank

# Agenda Item 5

Children and Young People Select Committee			
Title	Select Committee work programme		
Contributor	Scrutiny Manager	Item	5
Class	Part 1 (Open)	2 October 2014	

## 1. Purpose

To advise Members of the proposed work programme for the municipal year 2014/15, and to decide on the agenda items for the next meeting.

## 2. Summary

- 2.1 At the beginning of the new administration, each select committee drew up a draft work programme for submission to the Business Panel for consideration.
- 2.2 The Business Panel considered the proposed work programmes of each of the select committees on 29 July 2014 and agreed a co-ordinated overview and scrutiny work programme. However, the work programme can be reviewed at each Select Committee meeting so that Members are able to include urgent, high priority items and remove items that are no longer a priority.

## 3. Recommendations

3.1 The Committee is asked to:

- note the scope for the Young People's Mental Health Provision rapid review attached at **Appendix B** and agree the terms of reference and timetable contained in it.
- note the scope for the Promoting Best Practice Between Schools rapid review attached at **Appendix C** and agree the terms of reference and timetable contained in it.
- note the work plan attached at **Appendix D** and discuss any issues arising from the programme;
- specify the information and analysis required in the report for each item on the agenda for the next meeting, based on desired outcomes, so that officers are clear on what they need to provide;
- review all forthcoming key decisions, attached at **Appendix E**, and consider any items for further scrutiny.

## 4. The work programme

- 4.1 The work programme for 2014/15 was agreed at the Committee's meeting on 1 July 2014.
- 4.2 The Committee is asked to consider if any urgent issues have arisen that require scrutiny and if any existing items are no longer a priority and can be removed from

the work programme. Before adding additional items, each item should be considered against agreed criteria. The flow chart attached at **Appendix A** may help Members decide if proposed additional items should be added to the work programme. The Committee's work programme needs to be achievable in terms of the amount of meeting time available. If the committee agrees to add additional item(s) because they are urgent and high priority, Members will need to consider which medium/low priority item(s) should be removed in order to create sufficient capacity for the new item(s).

## 5. The next meeting

5.1 The following reports are scheduled for the meeting on 12 November 2014:

Agenda item	Review type	Link to Corporate Priority	Priority
<b>Young People's Mental Health Provision Rapid Review – Evidence session</b>	In-depth	Protection of children	High
<b>Lewisham Safeguarding Children Board Annual Report</b>	Performance monitoring	Protection of children	Medium
<b>Raising the Participation Age</b>	Standard item	Young people's achievement and involvement	High

5.2 The Committee is asked to specify the information and analysis it would like to see in the reports for these item, based on the outcomes the committee would like to achieve, so that officers are clear on what they need to provide for the next meeting.

## 6. Financial Implications

There are no financial implications arising from this report.

## 7. Legal Implications

In accordance with the Council's Constitution, all scrutiny select committees must devise and submit a work programme to the Business Panel at the start of each municipal year.

## 8. Equalities Implications

8.1 The Equality Act 2010 brought together all previous equality legislation in England, Scotland and Wales. The Act included a new public sector equality duty, replacing the separate duties relating to race, disability and gender equality. The duty came into force on 6 April 2011. It covers the following nine protected characteristics: age, disability, gender reassignment, marriage and civil partnership, pregnancy and maternity, race, religion or belief, sex and sexual orientation.

8.2 The Council must, in the exercise of its functions, have due regard to the need to:

- eliminate unlawful discrimination, harassment and victimisation and other conduct prohibited by the Act
- advance equality of opportunity between people who share a protected characteristic and those who do not.
- foster good relations between people who share a protected characteristic and those who do not.

8.3 There may be equalities implications arising from items on the work programme and all activities undertaken by the Select Committee will need to give due consideration to this.

## **9. Date of next meeting**

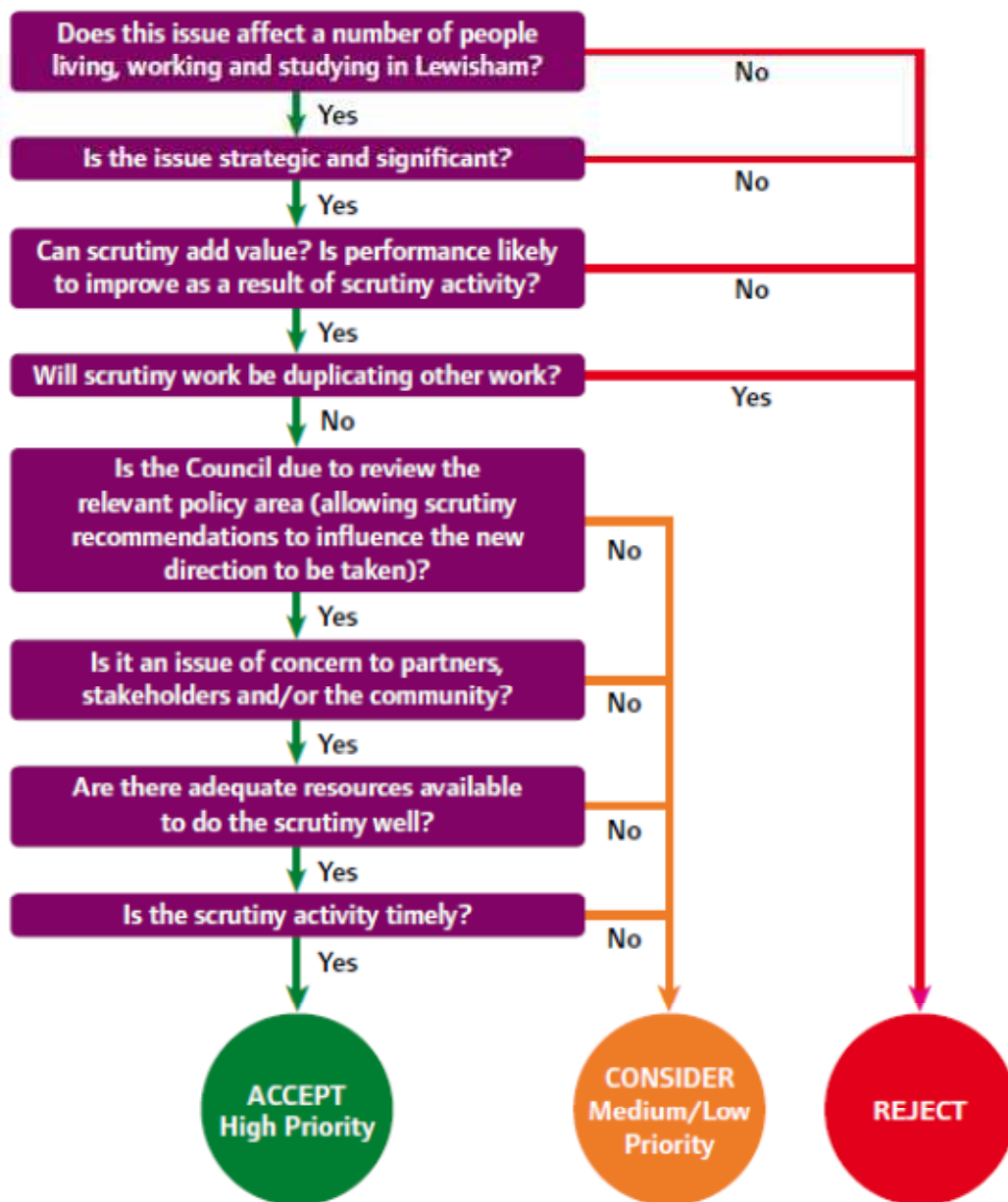
9.1 The date of the next meeting is Wednesday 12 November 2014.

### **Background Documents**

Lewisham Council's Constitution

Centre for Public Scrutiny: the Good Scrutiny Guide

## Scrutiny work programme – prioritisation process



<b>Children and Young People Select Committee</b>			
<b>Title</b>	Young People's Mental Health Provision Rapid Review: Scoping Paper	<b>Item No</b>	5
<b>Contributors</b>	Scrutiny Manager		
<b>Class</b>	Part 1	<b>Date</b>	2 October 2014

## **1. Purpose of paper**

- 1.1. At its meeting on 1 July 2014, the Committee decided as part of its work programme to undertake a rapid review looking at young people's mental health provision in Lewisham.
- 1.2. This paper sets out the rationale for the review, provides some background information on the current situation within Lewisham and sets out proposed terms of reference for the review.
- 1.3. The rapid review process is outlined at Appendix A.

## **2. Recommendations**

- 2.1. The Select Committee is asked to:
  - note the content of the report
  - consider and agree the proposed terms of reference for the review, outlined in section 6 and the timetable, outlined in section 7.

## **3. Background**

- 3.1. At the meeting of the Children and Young People Select Committee on the 1 July 2014, the Committee discussed undertaking a rapid review looking at young people's mental health provision in Lewisham. At the meeting of the Overview and Scrutiny Business Panel on 29 July 2014 it was agreed that members of the Healthier Communities Select Committee would be invited to the evidence session for the review and be allowed to participate.
- 3.2. Most data about the mental health of young people at a national level is focussed on those with higher levels of need. The tiers of need that are used to identify levels of need are explained in section 5.
- 3.3. It has been shown that 1 in 10 children and young people aged 5-16 years suffer from a diagnosable mental health disorder<sup>1</sup>, which is around three children in every school class. According to a public mental health overview conducted by

<sup>1</sup> Green, H., McGinnity, A., Meltzer, H., et al. (2005). [Mental health of children and young people in Great Britain 2004](#). London: Palgrave.

UCL Partners in 2013<sup>2</sup> the impacts of mental disorder are far reaching and can include:

- Increasing the risk of suicide and self-harm
- Engaging in health risk behaviour (such as smoking, alcohol abuse, drug taking)
- Physical ill health
- Poor educational outcomes
- Unemployment
- Antisocial behaviour and offending
- Poor social skills.

3.4. The wide reaching implications of mental health problems and the financial and human costs involved highlight the importance of work to improve mental health across the population. Working with young people is an opportunity to focus on the prevention of mental ill health where possible and to develop targeted interventions to limit the negative impacts of mental disorder. This is a cost effective way to improve mental health problems in the population and reduce the burden of disease.

3.5. In Lewisham, 8.4% of young people aged 5-16 have a diagnosed conduct disorder and 5.6% of young people of the same age have a diagnosed emotional disorder<sup>3</sup>. These levels are comparable with other London boroughs with similar Index of Multiple Deprivation scores. These young people represent a high risk group for low well-being due to their pre-existing mental health problems.

3.6. Assuming a national prevalence of 7%, Lewisham has 1,302 young people aged 11-16 who self-harm<sup>4</sup>. Lewisham has an annual incidence of psychosis of 47.4 per 100,000<sup>5</sup>. This is comparable to other inner London boroughs and considerably better than levels of psychosis in Lambeth and Southwark.

3.7. Children and young people who are able to adapt to change, manage their emotions well and become more 'resilient' to difficulties in their lives are more likely to thrive as adults and less likely to experience mental illness in the future. Young people who may be at risk of low resilience and who may experience difficulties accessing support include:

- Young carers
- Those from families affected by learning disability
- Those from families affected by mental illness
- Those from families known to the criminal justice system
- Looked after children
- Young people who are experience difficulties when transferring to secondary school
- Young people who have experienced trauma, such as domestic violence; exposed to serious youth violence, bereavement etc
- Young people living in poverty

---

<sup>2</sup> UCL Partners; Public mental health overview. October 2013

<sup>3</sup> Champion & Fitch, 2012

<sup>4</sup> Green et al, 2005

<sup>5</sup> PsyMaptic, 2013



- LGBT young people
  - Young people not in mainstream education
- 3.8. Lewisham Community Children’s and Adolescent’s Mental Health Services are commissioned by both Lewisham Clinical Commissioning Group (CCG) and London Borough of Lewisham (LBL). Services are provided by South London and Maudsley NHS Foundation Trust (SLaM) who provide support to Lewisham children/young people requiring assessment and treatment/support for emotional needs and mental health conditions, primarily at tiers 3 and 4. The Children and Young People’s Joint Commissioning Team is responsible for contract monitoring and service planning arrangements on behalf of the CCG and the Local Authority, for the commissioned CAMHS service and for the non-statutory tier 2 provision outlined in section 5.

#### **4. Policy context**

- 4.1. Children and Adolescent Mental Health Services (CAMHS) are commissioned within the context of National CAMHS policy, which include the Children and Young People’s Health Outcomes Forum Report (2012); No Health Without Mental Health; An all age strategy (2011); Achieving Equity and Excellence for Children (2010); and The National Service Framework for Children, Young People and Maternity: The Mental Health and Psychological Well-being of Children and Young People (2004).
- 4.2. Commissioned services operate in compliance with the legislative frameworks of the Children Act 2004 and the Mental Health Act 1983, as amended by the Mental Health Act 2007. Care should be informed by evidence based practice including National Institute for Health and Care Excellence (NICE) and other best practice guidelines.
- 4.3. Lewisham’s Sustainable Communities Strategy sets out six key priorities for the borough as a whole.<sup>6</sup> The review falls under the ‘Safer’ priority, which aims to keep our children and young people safe from harm, abuse and criminal activity as well as the ‘Healthy, Active and Enjoyable’ priority which aims to improve health outcomes and tackle the specific conditions that affect our citizens.
- 4.4. Lewisham’s Children and Young People’s Plan for 2012-2015, entitled ‘It’s Everybody’s Business’<sup>7</sup> sets out key areas for impact and priorities surrounding children and young people. This review will fall under the ‘Be Healthy’(BH6) priority, priority which aims to ‘Promote mental and emotional wellbeing’.

---

<sup>6</sup> Lewisham’s Sustainable Community Strategy 2008-2020  
<http://www.lewisham.gov.uk/mayorandcouncil/aboutthecouncil/strategies/Documents/Sustainable%20Community%20Strategy%202008-2020.pdf>

<sup>7</sup> Lewisham Children and Young People’s Plan 2012-2015  
<http://www.lewisham.gov.uk/myservices/socialcare/children/Documents/CYPP2012-15.pdf>

## 5. Current Service provision

- 5.1. Mental health services in Lewisham are divided into four tiers, reflecting the different levels of need of those receiving services.
- 5.2. Historically, most service provision in Lewisham has been focused on highly specialised mental health services with less universal mental health promotion provision (although pockets of good practice do exist across the borough).

### Tier 4 Provision (Specialist CAMHS)

- 5.3. Tier 4 provision includes highly specialised outpatient and inpatient units. South London and Maudsley (SLaM) NHS Foundation Trust are commissioned through a cost and volume contract to provide Lewisham patients with tier 4 outpatient and inpatient services through the SLaM national and specialist services. A small number of tier 4 outpatient services and all intensive day and inpatient care is commissioned via NHS England. Non-contracted providers of Psychiatric Intensive Care Units (PICU) can be used where patients require more specialist provision.

### Tier 3 Provision (Specialist CAMHS)

- 5.4. Tier 3 provision refers to specialised multi-disciplinary services, set up to respond to more severe, complex or persistent disorders. SLaM provides a range of tier 3 provision through a number of community teams including: SYMBOL (for Looked after Children); Lewisham Young People's Service (for young people with emerging psychosis); Neuro-Development (for learning difficulties); ARTS (for young people with a mental health disorder and a history of criminal offending); and East/West Generic teams. Commissioners have also given agreement for SLaM to expand the OASIS service, an outreach service for people (14-35 yrs old) at risk of developing psychosis, to cover Lewisham.

### Tier 2 Provision (targeted)

- 5.5. Tier 2 provision is non-statutory provision that can be provided by professional groups which relate to each other through a network rather than a team. This can take place in schools or other community settings such as GP surgeries or youth centres. Local approaches include:
  - Place2Be (P2B), a national charity who provide a school based counselling service, offering 1:1 appointments, group sessions and drop ins. This is supported by a comprehensive training and consultative support programme for school staff.
  - Children and Young People's Improving Access to Psychological Therapies (CYP IAPT) which includes delivery of psychological therapies and training for people working with children and young people outside of health settings. It focuses on extending training to staff and service managers in CAMHS, embedding evidence based practice across services.
  - Functional Family Therapy (FFT), an evidence-based family therapy intervention which is targeted at families who have a young person engaging in persistent anti-social behaviour, youth offending and/or substance misuse.

## Tier 1 Provision (Universal)

- 5.6. Tier 1 provision is primary or universal care, offered by professionals working in universal settings, such as teachers, school nurses and GPs.
- 5.7. In Lewisham one of the key developments in tier one provision has been the bid to the Big Lottery Fund's HeadStart Programme. The HeadStart programme aims to equip young people to cope better with difficult circumstances in their lives, so as to prevent them experiencing common mental health problems before they become serious issues. This is called emotional resilience, and is an opportunity for young people to negotiate for and navigate their own way to resources that sustain their mental health. Evidence suggests that accessing those with low level symptoms and diagnosable problems through universal or whole group activity delivers better outcomes for the most vulnerable.<sup>8</sup> The overall stated aim of HeadStart is 'To better equip young people to prevent the initial occurrence of mental health problems, and to build the evidence for service redesign and investment in prevention' and to do this by taking a universal and targeted approach.
- 5.8. Lewisham were approached by the Big Lottery Fund as one of twelve areas in the country to consider how best to improve resilience and wellbeing in young people aged 10 – 14 years through the 'Fulfilling Lives: HeadStart Programme'. Since then Lewisham has been successful in its bid for resources and £500,000 has been secured that will be used to trial new approaches between August 2014 – December 2015. These trials will inform a further application in June 2015, where Lewisham can bid for a total £10 million to be spent over 5 years.
- 5.9. The HeadStart Programme gives Lewisham an opportunity to expand and develop the universal and targeted offer, which would work with existing provision and align with the wider partnership strategy to ensure that services intervene at the earliest point. The HeadStart Lewisham partnership includes the Local Authority, NHS services, schools, young people, the Metropolitan Police and the voluntary and community sector and is led by the Local Authority.
- 5.10. Extensive consultation has been undertaken with a wide range of stakeholders including young people, parents/carers and professionals across a range of settings. Findings have highlighted the need for increased and better access to a range information and support, in a variety of settings. Four locally developed outcomes have been developed as a response to these findings:
- **improved resilience** through a range of interventions such as school based / online counselling, creative arts activities and the implementation of a transition curriculum in schools.
  - **increased school attainment and integration with the community** through supportive work in schools, such as peer mentoring, identification of those at risk of disengaging and engagement in youth led projects, including the creative arts
  - **improved emotional literacy** through implementation of a transition curriculum in schools and engagement in youth led elements of the

---

<sup>8</sup> <http://www.biglotteryfund.org.uk/headstart>

programme, result in improved well-being and a reduction in the numbers of people with mental health problems.

- **needs prevented from escalating** through identification of young people at risk of poor outcomes by professionals, peers and family members who have received training as well as through learning skills to manage their feelings, through increased opportunity to access professional counsellors and having creative outlets, resulting in increased well-being and reduced numbers of people with mental health

## **6. Meeting the criteria for a review**

6.1. A review into young people's mental health provision meets the criteria for carrying out a scrutiny review, because:

- The issue affects a number of people living working and studying in the borough

## **7. Key lines of Inquiry**

7.1. In order to understand mental health service provision for children and young people, the Committee should address the following key questions:

- What are the emotional wellbeing and mental health needs of the children and young people of Lewisham
- What services are in place to meet these needs
- How can examples of current good practice and research be used to meet the gaps in service provision.

7.2. The BLF HeadStart project takes a universal and strategic approach to mental health in the borough and could have a significant impact on the mental health of young people in Lewisham. Therefore the Committee is recommended to focus on the work being carried out in this area. The Committee should consider the following key lines of inquiry:

- How is the Big Lottery HeadStart project developing new ideas for providing services or providing new services
- How are these new ideas and approaches being embedded into local provision
- How are young people involved in developing and shaping their own services, do young people feel they are actively involved
- Whether young people are being targeted outside of a school setting
- How digital technology is being used both to reach young people and deliver mental health services to them
- How will the effectiveness of the universal approach be monitored
- What is the evidence that this will lead to a reduction in need for tiers 3 and 4 services and how can this be monitored

## **8. Timetable**

8.1. The Committee is asked to consider the outline timetable for the review as set out below:

**Evidence-taking session (12 November 2014):**

Report from officers providing information around children and young people's mental health service provision, including commissioning, funding and comparative performance as well as information about the Big Lottery HeadStart project will also be provided.

Witnesses will include officers as well as representatives from organisations delivering mental health services and those involved in the Big Lottery Fund HeadStart project.

The Committee will also have the opportunity outside a committee meeting to speak to young people who have been involved in the Big Lottery HeadStart project.

**Recommendations and final report (15 December 2014)**

The Committee will consider a final report presenting all the evidence taken and agree recommendations for submission to Mayor & Cabinet.

**9. Further implications**

- 9.1. At this stage there are no specific financial, legal, environmental or equalities implications to consider. However, each will be addressed as part of the review.

For further information please contact Andrew Hagger, Scrutiny Manager on 020 8314 9446 or email [andrew.hagger@lewisham.gov.uk](mailto:andrew.hagger@lewisham.gov.uk)

This page is intentionally left blank

<b>Children and Young People Select Committee</b>			
<b>Title</b>	Promoting Best Practice Between Schools Review: Scoping Paper	<b>Item No</b>	5
<b>Contributors</b>	Scrutiny Manager		
<b>Class</b>	Part 1	<b>Date</b>	2 October 2014

## **1. Purpose of paper**

- 1.1. At its meeting on 1 July 2014, the Committee decided as part of its work programme to undertake a rapid review looking at how best practice is promoted and shared amongst schools in Lewisham.
- 1.2. This paper sets out the rationale for the review, provides some background information on the current situation within Lewisham and sets out proposed terms of reference for the review.
- 1.3. The in-depth review process is outlined at Appendix A.

## **2. Recommendations**

- 2.1. The Select Committee is asked to:
  - note the content of the report
  - consider and agree the proposed terms of reference for the review, outlined in section 6 and the timetable, outlined in section 7.

## **3. Background**

- 3.1. At the meeting of the Children and Young People Select Committee on the 1 July 2014, the Committee discussed undertaking a rapid review looking at sharing best practice within schools based around the Gold Club, including site visits to schools.
- 3.2. Lewisham is currently looking at how to close the gap between the achievement levels of those not on the pupil premium and those on the pupil premium by looking at good practice and how to share it.
- 3.3. The Mayor of London's London Schools' Gold Club is an annual scheme which celebrates and shares exceptional practice in London's primary and secondary schools. Gold Club members are schools that have succeeded against the odds in improving pupils' aspirations and achievements. The London Schools' Gold Club forms a centrepiece of the Mayor of London's Education Programme, which aims to play a significant role in helping London schools to be even more ambitious in improving standards. It came from the Mayor of London's education

inquiry in 2011-12 and the independent panel's final report 'Going for Gold: Turning achievement into excellence in London's schools'.<sup>1</sup>

- 3.4. The scheme champions exceptional schools and works with them to identify what has made the difference for their school and helps them share this practice and their experience with other London schools. The Gold Club is based on the belief that all schools can aspire to attain excellence for all their pupils, whatever their circumstances. The messages to London schools are that children with pupil premium funding should be doing at least as well as the national average. For primary schools, Level 5 or above is the benchmark rather than Level 4. Schools with a high proportion of children with pupil premium funding should have high numbers of pupils achieving at Level 5.<sup>2</sup>
- 3.5. A school to school learning programme allows all schools across London to learn from Gold Club schools' good practice in "bucking the trend" – particularly those that are overcoming factors of poverty, disadvantage and low attainment for their pupils. The Gold Club sits alongside the £24 million London Schools Excellence Fund, whose focus is on more professional development for teachers across London and spreading excellent teaching to raise standards in literacy, numeracy, STEM (separate sciences, technology, engineering and maths) and modern and ancient foreign languages.
- 3.6. There are over 100 Gold Club schools in London, with 9 Gold Club primary schools in Lewisham and one secondary school:
  - Brindishe Lee School
  - Brindishe Green School
  - Eliot Bank Primary School
  - Fairlawn Primary School
  - Grinling Gibbons Primary School
  - John Ball Primary School
  - Lee Manor School
  - Rathfern Primary School
  - Sir Francis Drake Primary School  
  - Sydenham School

#### **4. Policy context**

- 4.1. Lewisham's Sustainable Communities Strategy sets out six key priorities for the borough as a whole.<sup>3</sup> The review falls under the 'Ambitious and achieving' priority which aims to inspire our young people to achieve their full potential by removing the barriers.

---

<sup>1</sup> The Mayor's Education Inquiry: Going for Gold – Turning achievement into excellence in London's schools  
<http://www.london.gov.uk/sites/default/files/The%20Mayor%27s%20Education%20Inquiry%20Final%20Report.pdf>

<sup>2</sup> London Schools' Gold Club website <http://www.londonschoolsgoldclub.org.uk/>

<sup>3</sup> Lewisham's Sustainable Community Strategy 2008-2020  
<http://www.lewisham.gov.uk/mayorandcouncil/aboutthecouncil/strategies/Documents/Sustainable%20Community%20Strategy%202008-2020.pdf>



- 4.2. Lewisham's Children and Young People's Plan for 2012-2015, entitled 'It's everybody's business'<sup>4</sup> sets out key areas for impact and priorities surrounding children and young people. This review will fall under the 'Enjoy and achieve' priority, specifically the EA1 priority which aims to 'Raise achievement at all key stages' as well as the EA2 priority which aims to 'Close the achievement gaps between under-achieving groups and their peers'.

## 5. Meeting the criteria for a review

- 5.1. A review looking at how best practice is promoted and shared amongst schools in Lewisham meets the criteria for carrying out a scrutiny review, because:
- The issue affects a number of people living working and studying in the borough

## 6. Key lines of Inquiry

- 6.1. In order to understand how best practice is shared the Committee should consider the following key lines of inquiry during its review and at the site visits to schools:
- How does the Gold Club support better sharing of best practice and how effective is this support
  - How are the impacts of best practice sharing being monitored in potential improvements in school results
  - How does Lewisham Council support the sharing of best practice and are there opportunities for this to be improved
- 6.2. While not part of the rapid review, members will be able to ask questions about the best practice approaches that are being taken by schools as part of the planned visits. The Committee indicated in its meeting on 1 July 2014 that they would be particularly interested in best practice approaches surrounding the pupil premium and innovative uses of using IT to deliver learning.

## 7. Timetable

- 7.1. The Committee is asked to consider the outline timetable for the review as set out below:

### **Evidence gathering visits** (November, December and January)

The Committee will visit a number of schools in order to speak to staff there about how they share best practice with other schools and the role that the Gold Club plays in supporting this.

While conducting these visits, members will be able to ask questions about the best practice approaches that are being taken by schools particularly surrounding the pupil premium and innovative uses of using IT to deliver learning.

---

<sup>4</sup> Lewisham Children and Young People's Plan 2012-2015  
<http://www.lewisham.gov.uk/myservices/socialcare/children/Documents/CYPP2012-15.pdf>

**Evidence-taking session (4 February 2015):**

This will be an opportunity for the Committee to share and discuss the findings from site visits to schools. A report from officers will provide information around the background to the London Schools Gold Club as well as the support that Lewisham Council provides to schools in sharing best practice.

**Recommendations and final report (18 March 2015)**

The Committee will consider a final report presenting all the evidence taken and agree recommendations for submission to Mayor & Cabinet.

**8. Further implications**

- 8.1. At this stage there are no specific financial, legal, environmental or equalities implications to consider. However, each will be addressed as part of the review.

For further information please contact Andrew Hagger, Scrutiny Manager on 020 8314 9446 or email [andrew.hagger@lewisham.gov.uk](mailto:andrew.hagger@lewisham.gov.uk)

**Children and Young People Select Committee 2014/15**

**Programme of Work**

Work Item	Type of review	Priority	Strategic Priority	Delivery deadline	01-Jul	02-Oct	12-Nov	15-Dec	04-Feb	18-Mar
Lewisham Future Programme	Standard item	High		March						
Election of the Chair and Vice-Chair	Constitutional requirement	High		July						
Select Committee work programme 2014/15	Constitutional requirement	High		July						
Young people's mental health	Rapid review	High		December		Scope	Evidence	Report		
Gold Club schools - sharing best practice	Rapid review	Medium		March		Scope	Visits	Visits	Evidence	Report
Attainment and achievement in Lewisham schools	Performance monitoring	High		October						
LSCB annual report	Performance monitoring	Medium		October						
Raising the Participation Age	Standard item	High		December						
Nursery Education and Childcare Review - Update	Performance monitoring	Low		December						
Children with Complex Needs update	Standard item	Medium		December						
Schools capacity places planning	Standard item	High		February						
Secondary Schools Improvement	Standard item	High		February						
Corporate Parenting and LAC update	Performance monitoring	Medium		March						
Safeguarding update	Performance monitoring	Medium		March						
Youth Service update (incl. gap analysis of non-school services for young people)	Standard item	Medium		March						
CYPP	Policy development	High		March						

	Item completed
	Item ongoing
	Item outstanding
	Proposed timeframe
	Carried over from last year
	Item added

Meeting dates			
1)	01-Jul	4)	15-Dec
2)	02-Oct	5)	04-Feb
3)	12-Nov	6)	18-Mar

This page is intentionally left blank

**MAYOR & CABINET AND SCRUTINY  
PROGRAMME OF BUSINESS**

**Programme of Business for August 2014 - November 2014**

Meeting date	Committee	Item	Directorate	Lead Officer
September				
Monday, 22 Sep 2014	Public Accounts Select Committee	Collection and usage of Section 106 funds	Resources and Regeneration Directorate	
Monday, 22 Sep 2014	Public Accounts Select Committee	Council ICT	Customer Services Directorate	Peter Gadsdon
Monday, 22 Sep 2014	Public Accounts Select Committee	Select Committee Work Programme		
October				
Wednesday, 1 Oct 2014	Mayor and Cabinet	Housing Regeneration Schemes update		Kevin Sheehan
Wednesday, 1 Oct 2014	Mayor and Cabinet	Local Authority Governor Appointments		Frankie Sulke
Wednesday, 1 Oct 2014	Mayor and Cabinet	Making of Instrument of Government for Watergate school.		Frankie Sulke
Wednesday, 1 Oct 2014	Mayor and Cabinet	Management Report		Janet Senior
Wednesday, 1 Oct 2014	Housing Select Committee	Communal heating systems review	Customer Services Directorate	Timothy Andrew
Wednesday, 1 Oct 2014	Housing Select Committee	Lewisham housing strategy (2014-17)	Customer Services Directorate	Jeff Endean
Wednesday, 1 Oct 2014	Housing Select Committee	Welfare reform update	Customer Services Directorate	Jeff Endean
Thursday, 2 Oct 2014	Children and Young People Select Committee	Lewisham Safeguarding Children Board Annual Report	Children and Young People Directorate	Ian Smith
Thursday, 2 Oct 2014	Children and Young People Select Committee	Attainment and achievement in Lewisham Schools	Children and Young People Directorate	Sue Tipler
Tuesday, 14 Oct 2014	Overview and Scrutiny Business Panel	Appointment of contractor 28 Deptford High St to convert former Law Centre		Janet Senior
Tuesday, 21 Oct 2014	Healthier Communities Select Committee	Emergency services review: update		

Meeting date	Committee	Item	Directorate	Lead Officer
Tuesday, 21 Oct 2014	Healthier Communities Select Committee	Health and social care integration	Community Services Directorate	
Tuesday, 21 Oct 2014	Healthier Communities Select Committee	Health and Wellbeing strategy and delivery plan	Community Services Directorate	
Tuesday, 21 Oct 2014	Healthier Communities Select Committee	LSL sexual health strategy: action plan	Community Services Directorate	Ruth Hutt
Wednesday, 22 Oct 2014	Mayor and Cabinet	Application to become an accredited Timewise council		Janet Senior
Wednesday, 22 Oct 2014	Mayor and Cabinet	Approval for public consultation of the Lewisham River Corridors Improvement Plan Supplementary Planning Document		Janet Senior
Wednesday, 22 Oct 2014	Mayor and Cabinet	144 Evelyn Street (Parker House) - Surplus Declaration and Approval to Demolish		Janet Senior
Wednesday, 22 Oct 2014	Mayor and Cabinet	Local Authority Governor Appointments		Frankie Sulke
Wednesday, 22 Oct 2014	Mayor and Cabinet	Mayor of London's Infrastructure Plan 2050		Janet Senior
Wednesday, 22 Oct 2014	Mayor and Cabinet	Proposal to enlarge Holbeach Primary School Design Progress		Frankie Sulke
Wednesday, 22 Oct 2014	Mayor and Cabinet	Making of Instrument of Government St Michael's Church of England Primary School		Frankie Sulke
Wednesday, 22 Oct 2014	Mayor and Cabinet	Winter Maintenance Policy and Plan 2014/15		Janet Senior
Wednesday, 22 Oct 2014	Mayor and Cabinet (Contracts)	Contract Awards Enlargement of Holbeach Primary School and Coopers Lane Primary School		Frankie Sulke
Wednesday, 22 Oct 2014	Mayor and Cabinet (Contracts)	Deployable Temporary Accommodation - Single Tender Action		Kevin Sheehan
Wednesday, 22 Oct 2014	Mayor and Cabinet (Contracts)	Drumbeat 6th form school: Phase 3 new build		Janet Senior
Wednesday, 22 Oct 2014	Mayor and Cabinet (Contracts)	Education Contract Awards ICT Specialist Service Provider Framework		Frankie Sulke
Wednesday, 22 Oct	Mayor and Cabinet	Procurement of a Corporate Scanning Service Provider		Kevin Sheehan

Meeting date	Committee	Item	Directorate	Lead Officer
2014	(Contracts)			
Thursday, 30 Oct 2014	Sustainable Development Select Committee	Select Committee Work Programme		
Thursday, 30 Oct 2014	Sustainable Development Select Committee	Annual Parking Report	Customer Services Directorate	Lesley Brooks
Thursday, 30 Oct 2014	Sustainable Development Select Committee	Waste Strategy	Customer Services Directorate	Nigel Tyrell, Kevin Sheehan
November				
Monday, 3 Nov 2014	Safer Stronger Communities Select Committee	Main grant programme funding	Community Services Directorate	Liz Dart
Tuesday, 4 Nov 2014	Overview and Scrutiny Business Panel	Executive Director decisions		
Wednesday, 5 Nov 2014	Public Accounts Select Committee	Financial forecasts 2014/15	Resources and Regeneration Directorate	Selwyn Thompson
Wednesday, 5 Nov 2014	Public Accounts Select Committee	Management report	Resources and Regeneration Directorate	
Wednesday, 5 Nov 2014	Public Accounts Select Committee	Impact of people with no recourse to public funds in the borough		
Wednesday, 5 Nov 2014	Public Accounts Select Committee	Mid-year treasury management review	Resources and Regeneration Directorate	Selwyn Thompson
Wednesday, 5 Nov 2014	Public Accounts Select Committee	Annual complaints report	Customer Services Directorate	Peter Gadsdon
Wednesday, 5 Nov 2014	Public Accounts Select Committee	Select Committee Work Programme		
Tuesday, 11 Nov 2014	Housing Select Committee	Communal heating systems review	Customer Services Directorate	Timothy Andrew
Tuesday, 11 Nov 2014	Housing Select Committee	Brockley PFI mid year review	Customer Services Directorate	Jeff Endean



<b>Meeting date</b>	<b>Committee</b>	<b>Item</b>	<b>Directorate</b>	<b>Lead Officer</b>
Tuesday, 11 Nov 2014	Housing Select Committee	Self build update	Customer Services Directorate	Jeff Edean
Wednesday, 12 Nov 2014	Children and Young People Select Committee	Young People's Mental Health Review	Children and Young People Directorate	
Wednesday, 12 Nov 2014	Children and Young People Select Committee	Raising the Participation Age	Children and Young People Directorate	Chris Threlfall
Wednesday, 12 Nov 2014	Mayor and Cabinet	Annual Complaints Report		Janet Senior
Wednesday, 12 Nov 2014	Mayor and Cabinet	Annual Parking Review		Kevin Sheehan
Wednesday, 12 Nov 2014	Mayor and Cabinet	Campshill Road Extra Care Scheme		Kevin Sheehan
Wednesday, 12 Nov 2014	Mayor and Cabinet	Deptford Southern Sites Regeneration Project		Kevin Sheehan
Wednesday, 12 Nov 2014	Mayor and Cabinet	Kenton Court and Somerville Extra Care Schemes: Update		Kevin Sheehan
Wednesday, 12 Nov 2014	Mayor and Cabinet	Deptford Southern Sites Regeneration Project		Kevin Sheehan
Wednesday, 12 Nov 2014	Mayor and Cabinet	Introduction of a new Street Naming & Numbering charging service		Janet Senior
Wednesday, 12 Nov 2014	Mayor and Cabinet	Introduction of a borough wide 20mph zone		Janet Senior
Wednesday, 12 Nov 2014	Mayor and Cabinet	Phoenix Community Housing Board		Kevin Sheehan
Wednesday, 12 Nov 2014	Mayor and Cabinet (Contracts)	Corporate energy contracts - review 2014		Janet Senior
Wednesday, 12 Nov 2014	Mayor and Cabinet (Contracts)	Learning Contract provider		Janet Senior
Wednesday, 12 Nov 2014	Mayor and Cabinet (Contracts)	Supporting the Voluntary Sector - outcome of consultation and approval to open Main grants programme for applications		Aileen Buckton

Meeting date	Committee	Item	Directorate	Lead Officer
Wednesday, 12 Nov 2014	Children and Young People Select Committee	Select Committee Work Programme		
Tuesday, 25 Nov 2014	Overview and Scrutiny Business Panel	Executive Director decisions		
December				
Tuesday, 2 Dec 2014	Healthier Communities Select Committee	Sustainability of community health initiatives	Community Services Directorate	Dr Danny Ruta
Tuesday, 2 Dec 2014	Healthier Communities Select Committee	Community mental health review: update	Community Services Directorate	
Tuesday, 2 Dec 2014	Healthier Communities Select Committee	Health and social care integration	Community Services Directorate	
Tuesday, 2 Dec 2014	Healthier Communities Select Committee	Public health 2013/14 annual report	Community Services Directorate	Dr Danny Ruta
Wednesday, 3 Dec 2014	Mayor and Cabinet	Church Grove Custom Build		Kevin Sheehan
Wednesday, 3 Dec 2014	Mayor and Cabinet	Customer Service Centre Out of Hours Switchboard Procurement		Kevin Sheehan
Wednesday, 3 Dec 2014	Mayor and Cabinet	Draft Flood Management Strategy		Janet Senior
Wednesday, 3 Dec 2014	Mayor and Cabinet	Housing Strategy 2015 - 2020		Kevin Sheehan
Wednesday, 3 Dec 2014	Mayor and Cabinet	Management Report		Janet Senior
Wednesday, 3 Dec 2014	Mayor and Cabinet	Strategic Asset Management Plan 2014-15		Janet Senior
Wednesday, 3 Dec 2014	Mayor and Cabinet	Surrey Canal Triangle - Compulsory Purchase Order Resolution		Janet Senior
Wednesday, 3 Dec 2014	Mayor and Cabinet (Contracts)	Award of Street Advertising and Bus Shelter Contract		Janet Senior
Wednesday, 3 Dec 2014	Mayor and Cabinet (Contracts)	Award of a single Violence Against Women and Girls Service Contract		Aileen Buckton

Meeting date	Committee	Item	Directorate	Lead Officer
Wednesday, 3 Dec 2014	Mayor and Cabinet (Contracts)	Award of three drug and alcohol contracts: Young People, Aftercare, Shared care		Aileen Buckton
Wednesday, 3 Dec 2014	Mayor and Cabinet (Contracts)	Extension of drug and alcohol contract		Aileen Buckton
Wednesday, 3 Dec 2014	Safer Stronger Communities Select Committee	Dog bites and status dogs		
Wednesday, 3 Dec 2014	Safer Stronger Communities Select Committee	Probation service update	Community Services Directorate	Geeta Subramaniam-Mooney
Tuesday, 9 Dec 2014	Sustainable Development Select Committee	Select Committee Work Programme		
Wednesday, 10 Dec 2014	Public Accounts Select Committee	Financial forecasts 2014/15	Resources and Regeneration Directorate	Selwyn Thompson
Wednesday, 10 Dec 2014	Public Accounts Select Committee	Management report	Resources and Regeneration Directorate	
Wednesday, 10 Dec 2014	Public Accounts Select Committee	Asset management update	Resources and Regeneration Directorate	Rob Holmans
Wednesday, 10 Dec 2014	Public Accounts Select Committee	Cost of bed & breakfast provision	Customer Services Directorate	
Wednesday, 10 Dec 2014	Public Accounts Select Committee	Funding and Financial Management of Adult Social Care Review - Update	Community Services Directorate	Joan Hutton, Robert Mellors
Wednesday, 10 Dec 2014	Public Accounts Select Committee	Select Committee Work Programme		
Monday, 15 Dec 2014	Children and Young People Select Committee	Select Committee Work Programme		
Monday, 15 Dec 2014	Children and Young People Select Committee	Young People's Mental Health Review - Draft Report and Recommendations	Resources and Regeneration Directorate	Andrew Hagger
Monday, 15 Dec 2014	Children and Young People Select	Children with complex needs update	Children and Young People Directorate	Keith Martin

Meeting date	Committee	Item	Directorate	Lead Officer
	Committee			
Monday, 15 Dec 2014	Children and Young People Select Committee	Nursery Education and Childcare Review - Update	Children and Young People Directorate	Warwick Tomsett
Tuesday, 16 Dec 2014	Overview and Scrutiny Business Panel	Executive Director decisions		
Wednesday, 17 Dec 2014	Housing Select Committee	Communal heating systems review	Customer Services Directorate	Timothy Andrew
Wednesday, 17 Dec 2014	Housing Select Committee	Downsizing and housing moves review	Customer Services Directorate	Timothy Andrew
Wednesday, 17 Dec 2014	Housing Select Committee	Private rented sector update	Customer Services Directorate	Madeleine Jeffery
Wednesday, 17 Dec 2014	Housing Select Committee	Proposed rent and service charge increases	Customer Services Directorate	Mark Humphreys
January				
Wednesday, 14 Jan 2015	Healthier Communities Select Committee	Access to primary care		
Wednesday, 14 Jan 2015	Healthier Communities Select Committee	CQC local compliance manager update		
Tuesday, 20 Jan 2015	Sustainable Development Select Committee	Select Committee Work Programme		
Wednesday, 21 Jan 2015	Mayor and Cabinet	Community Infrastructure Levy - Adoption Version		Janet Senior
Wednesday, 21 Jan 2015	Mayor and Cabinet	Housing Regeneration		Kevin Sheehan
Wednesday, 21 Jan 2015	Mayor and Cabinet	Planning Obligations SPD - Adoption Version		Janet Senior
Wednesday, 21 Jan 2015	Mayor and Cabinet	Review of Blackheath Events Policy 2011		Kevin Sheehan
Wednesday, 21 Jan 2015	Mayor and Cabinet	Strategic Asset Management Plan 2015-2020		Janet Senior

Meeting date	Committee	Item	Directorate	Lead Officer
Thursday, 22 Jan 2015	Safer Stronger Communities Select Committee	Borough Police and Fire Commanders	Community Services Directorate	
Thursday, 22 Jan 2015	Safer Stronger Communities Select Committee	Emergency services review: update		
Thursday, 22 Jan 2015	Safer Stronger Communities Select Committee	Local assemblies report	Community Services Directorate	Winston Castello
Tuesday, 27 Jan 2015	Overview and Scrutiny Business Panel	Executive Director decisions		
Wednesday, 28 Jan 2015	Housing Select Committee	Lewisham housing strategy (2014-17)	Customer Services Directorate	Jeff Endean
February				
Wednesday, 4 Feb 2015	Children and Young People Select Committee	Select Committee Work Programme		
Thursday, 5 Feb 2015	Public Accounts Select Committee	Select Committee Work Programme		
Wednesday, 11 Feb 2015	Mayor and Cabinet	New Homes Better Places Funding Update		Kevin Sheehan
Wednesday, 11 Feb 2015	Mayor and Cabinet (Contracts)	Prevention and Inclusion Contract Extension and Commissioning Recommendation		Aileen Buckton
Tuesday, 17 Feb 2015	Overview and Scrutiny Business Panel	Executive Director decisions		
Tuesday, 24 Feb 2015	Healthier Communities Select Committee	Community education Lewisham annual report	Community Services Directorate	Helen Hammond
Tuesday, 24 Feb 2015	Healthier Communities Select Committee	King's elective service proposals: update		
Tuesday, 24 Feb 2015	Healthier Communities Select Committee	Leisure centre contract	Community Services Directorate	
Tuesday, 24 Feb 2015	Healthier Communities Select Committee	Library and information service	Community Services Directorate	Antonio Rizzo

Meeting date	Committee	Item	Directorate	Lead Officer
March				
Tuesday, 3 Mar 2015	Sustainable Development Select Committee	Select Committee Work Programme		
Wednesday, 4 Mar 2015	Safer Stronger Communities Select Committee	Comprehensive equalities scheme - monitoring and update	Resources and Regeneration Directorate	Paul Aladenika
Wednesday, 4 Mar 2015	Safer Stronger Communities Select Committee	Equalities in Lewisham		
Wednesday, 4 Mar 2015	Safer Stronger Communities Select Committee	Implementation of the volunteering strategy	Community Services Directorate	Liz Dart
Wednesday, 4 Mar 2015	Mayor and Cabinet	Management Report		Janet Senior
Wednesday, 4 Mar 2015	Safer Stronger Communities Select Committee	Safer Lewisham strategy monitoring and update	Community Services Directorate	Geeta Subramaniam-Mooney
Thursday, 5 Mar 2015	Mayor and Cabinet (Contracts)	Prevention and Inclusion Framework Contract Award		Aileen Buckton
Tuesday, 10 Mar 2015	Public Accounts Select Committee	Select Committee Work Programme		
Wednesday, 11 Mar 2015	Housing Select Committee	Annual lettings plan	Customer Services Directorate	Mark Dow
Wednesday, 11 Mar 2015	Housing Select Committee	Private rented sector update	Customer Services Directorate	Madeleine Jeffery
Tuesday, 17 Mar 2015	Overview and Scrutiny Business Panel	Executive Director decisions		
Wednesday, 18 Mar 2015	Children and Young People Select Committee	Select Committee Work Programme		
Wednesday, 8 Apr 2015	Overview and Scrutiny Business Panel	Executive Director decisions		